

Excellent Integrated System Limited

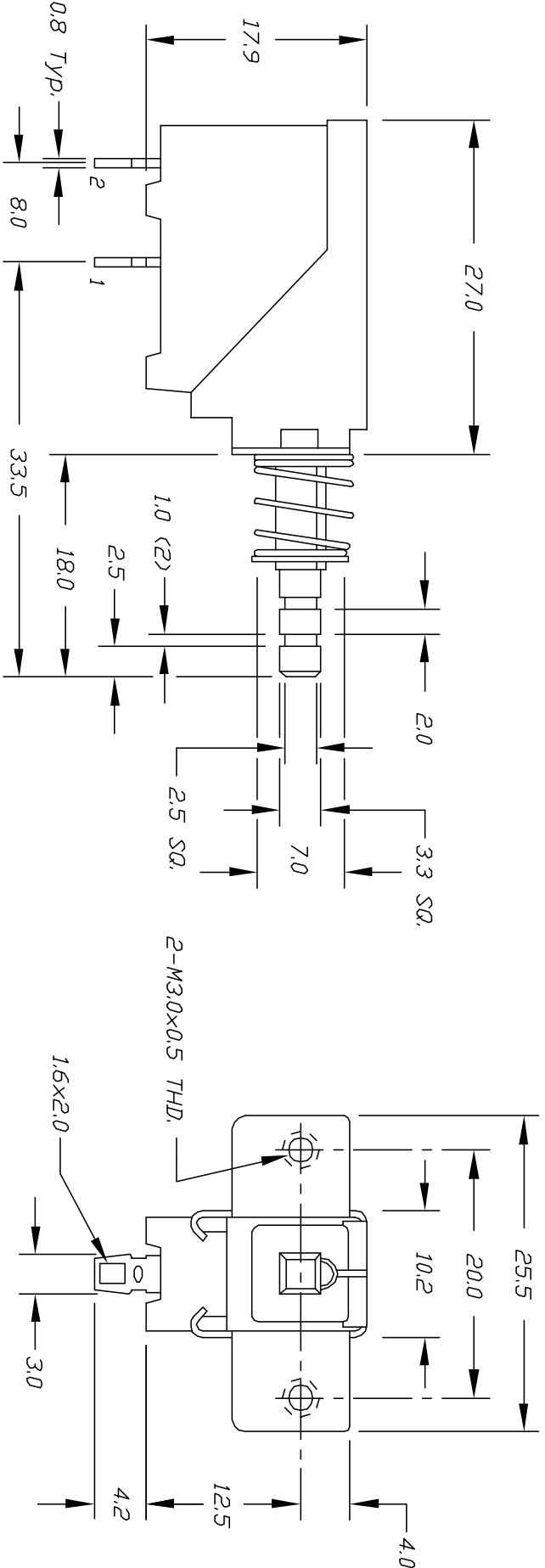
Stocking Distributor

Click to view price, real time Inventory, Delivery & Lifecycle Information:

[E-Switch](#)
[P197OASB](#)

For any questions, you can email us directly:

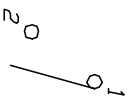
sales@integrated-circuit.com



NOTES:

1. ALL DIMENSIONS IN MM
2. TERM. NDS. FOR REF ONLY
3. RATING: AC250V 5A/80A, TV-5
4. CONTACT RESISTANCE: 100 mΩ Dms MAX. AT DC5V 1A
5. DIELECTRIC STRENGTH: AC 1000V FOR 1 MIN (TWL-TWL)
6. OPERATING FORCE: 350±100gf
7. TRAVEL: 3.5mm

CIRCUIT: SPST (Normally Open)
CONTACT CONFIGURATION



REV.	DESCRIPTION	DATE	CHKD
C	REVISED & REDRAWN	7/28/98	

TOLERANCES	
0.0	±0.4
0.00	±0.25

TITLE	SCALE	DATE	DR	DWG	REV
P197 SB DA POWER SWITCH	2:1	10/8/96	MM	P010054	C

E-SWITCH

THE INFORMATION CONTAINED IN THIS DOCUMENT IS PROPRIETARY TO E-SWITCH AND IS NOT TO BE COPIED OR TRANSMITTED