

Excellent Integrated System Limited

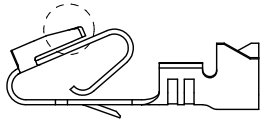
Stocking Distributor

Click to view price, real time Inventory, Delivery & Lifecycle Information:

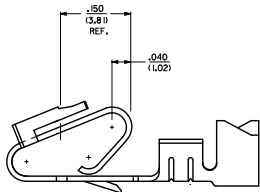
[Molex Connector Corporation](#)
[0008580110](#)

For any questions, you can email us directly:

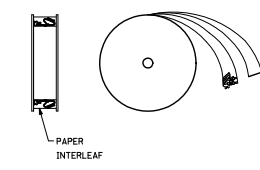
sales@integrated-circuit.com



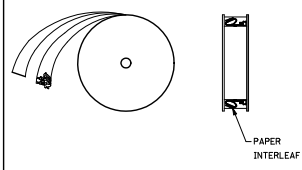
ALTERNATE GEOMETRY
SEE NOTE 10



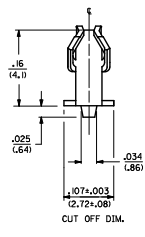
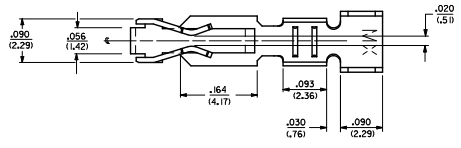
SELECTIVE PLATING
LOCATION



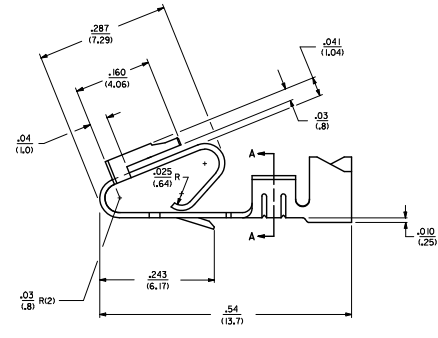
WINDING DETAIL 'A'



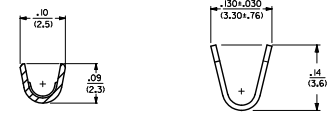
WINDING DETAIL 'B'



CUT OFF DIM.



- NOTES:
1. MATERIAL: SEE LEGEND
 2. FINISH:
 - 909 - OVERALL HOT TIN DIF. .000100/(0.00254) MIN.
 - 154 - OVERALL TIN: .000100/(0.00254) MIN. OVER .000050/(0.00127) MIN. NICKEL.
 - 555 - SELECT HARD GOLD: .000015/(0.00038) MIN. OVERALL NICKEL: .000030/(0.00076) MIN.
 - 558 - SELECT HARD GOLD: .000030/(0.00076) MIN. OVERALL NICKEL: .000050/(0.00127) MIN.
 - 561 - SELECT HARD GOLD FLASH: .000002/(0.00005) MIN. OVERALL NICKEL: .000050/(0.00127) MIN.
 3. PRODUCT SPECIFICATION: PS-40-02
 4. PACKAGING SPECIFICATION: CHAIN FORM: SEE PK-6838-001
LOOSE FORM: SEE PK-7759-001
 5. TERMINAL FOR USE IN HOUSING SERIES 6442 AND 41995.
 6. SEE 7258 SERIES FOR THIS PART WITH CRAMP FOR 22-26 AWG. WIRE.
 7. CRAMP FOR 18 TO 20 GA. WIRE WITH MAX. INSULATION DIA. OF .100/(2.79). STRIP LENGTH OF .125/(3.18) / (3.18/2.54)
 8. DIMENSIONS GIVEN ACROSS CENTERLINES ARE SYMMETRICAL ABOUT THOSE CENTERLINES WITHIN HALF THE TOTAL TOLERANCE.
 9. THIS PART CONFORMS TO CLASS B REQUIREMENTS OF COSMETIC SPECIFICATION PS-45499-002.
 10. ALTERNATE GEOMETRY PRESENT ON SOME PART NUMBERS. SEE SHEET 2.



SECTION A-A

- LEGEND: 6838
- WINDING
 - A= PER DETAIL A
 - BLANK= PER DETAIL B
 - FORM
 - BLANK= CHAIN
 - L= LOOSE
 - PLATING
- SEE NOTE 2
- MATERIAL:
L277/0106 THK
BLANK=BRASS
A=PHOS BRONZE

107 TO 154 PLTG EC NO. LCP202-1821 DRAWING NO. 207/01/04 CHECKED BY 207/01/05 APPROVED BY 207/01/02 AR REV	QUALITY SYMBOLS	GENERAL TOLERANCES (UNLESS SPECIFIED)	DIMENSION STYLE	SCALE	DESIGN UNITS	THIRD ANGLE PROJECTION	
	∇=0 ∇=0 ∇=0	4 PLACES ±--- ±--- 3 PLACES ±--- ±.010 2 PLACES ±0.25 ±.015 1 PLACE ±0.36 ±--- ANGULAR ±1/2°	mm INCH	DRAWN BY GUZIK DATE 11/15/89 CHECKED BY PATEL DATE 11/15/89 APPROVED BY LENZ DATE 11/15/89	---	INCH	TRIFURCON TERMINAL CRIMP TYPE .156 CENTERS 18 TO 20 AWG WIRE
	DRAFT WHERE APPLICABLE MUST REMAIN WITHIN DIMENSIONS	MATERIAL NO. SEE CHART	DOCUMENT NO. SD-6838	MOLEX INCORPORATED			
	SIZE D THIS DRAWING CONTAINS INFORMATION THAT IS PROPRIETARY TO MOLEX INCORPORATED AND SHOULD NOT BE USED WITHOUT WRITTEN PERMISSION	SHEET NO. 1 OF 2					

6838-(*)*-*			6838-A(*)*-*		
PART NO.	ENG. NO.		PART NO.	ENG. NO.	
08-50-0187	6838-(P909)	SEE NOTE 1	08-58-0187	6838-A(P558)	
08-50-0189	6838-(P909)L	SEE NOTE 1	08-58-0189	6838-A(P558)L	
08-50-0275	6838-(P909)-A		08-52-0112	6838-A(P909)	SEE NOTE 1
			08-52-0113	6838-A(P909)L	SEE NOTE 1
			08-50-0024	6838-A(154)	
			08-50-0251	6838-A(154)L	
			08-58-0105	6838-A(P555)	
			08-58-0106	6838-A(P555)L	
			08-58-0110	6838-A(P561)	SEE NOTE 1
			08-58-0111	6838-A(P561)L	SEE NOTE 1
			08-58-0118	6838-A(561)	
			08-58-0119	6838-A(561)L	

NOTES:

1. PART MANUFACTURED WITH ALTERNATE GEOMETRY. SEE SHEET 1.

SEE SHEET 1 EC No. 027202-821 DRAWING NO. 2017/01/04 CHECKED BY 2017/01/05 APPROVED BY 2017/01/05 AR REV	QUALITY SYMBOLS	GENERAL TOLERANCES (UNLESS SPECIFIED)	DIMENSION STYLE	SCALE	DESIGN UNITS	THIRD ANGLE PROJECTION
	▽=0	mm INCH	IN/MM	---	INCH	
	▽=0	4 PLACES ± --- ± ---	DRAWN BY	DATE	TITLE	
	▽=0	3 PLACES ± --- ± ---	GUZIK	11/15/89	TRIFURCON TERMINAL	
	2 PLACES ± --- ± ---	CHECKED BY	DATE			
	1 PLACE ± --- ± ---	PATEL	11/15/89	CRIMP TYPE .456 CENTERS		
	ANGULAR ±1/2°	APPROVED BY	DATE			
		LENZ	11/15/89	MOLEX INCORPORATED		
	DRAFT WHERE APPLICABLE MUST REMAIN WITHIN DIMENSIONS	RATERIAL NO.	SEE CHART	DOCUMENT NO.	SD-6838	SHEET NO. 2 OF 2
		SIZE	D THIS DRAWING CONTAINS INFORMATION THAT IS PROPRIETARY TO MOLEX INCORPORATED AND SHOULD NOT BE USED WITHOUT WRITTEN PERMISSION			