

Excellent Integrated System Limited

Stocking Distributor

Click to view price, real time Inventory, Delivery & Lifecycle Information:

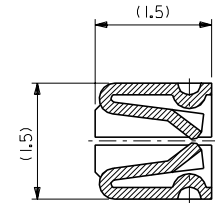
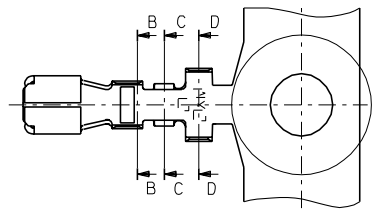
[Molex Connector Corporation](#)
[0500118000](#)

For any questions, you can email us directly:

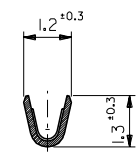
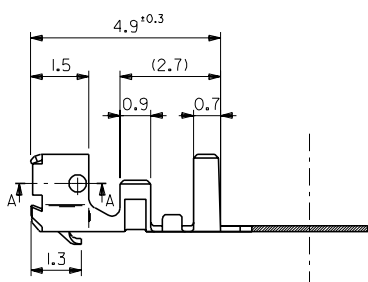
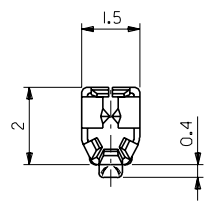
sales@integrated-circuit.com

DWG. NO. SD-50011-8*00

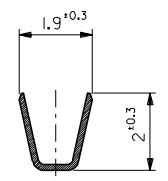
DIMENSIONS IN METRIC DO NOT SCALE DRAWING



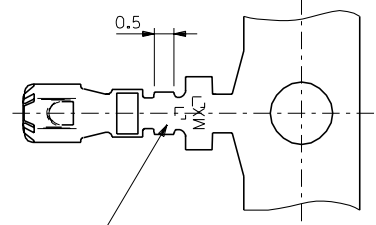
SECT.A-A
(SCALE 20:1)



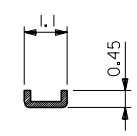
SECT.B-B



SECT.D-D



トレードマーク
TRADE MARK



SECT.C-C

50011-8100	バラ状 LOOSE
50011-8000	連鎖状 CHAIN
ENG. NO.	端子形状 FORM

注記
NOTE

- 適用ハウジング : 51004, 51049 シリーズ
APPLICABLE HOUSING : 51004, 51049 SERIES

角度 ANGLE	±3°	材料 MATERIAL	リン青銅 錫メッキ (t=0.15)
30以上 OVER	+0.3	仕上げ FINISH	—
10以上 OVER	+0.25	適用電線範囲 WIRE RANGE	AWG #24~#30
10未満 UNDER	+0.2	被覆外径 INS. RANGE	φ0.8~φ1.4
一般公差 GENERAL TOLERANCES	H	再作図 REDRAWN	UC60070
		記号 LTR	変更内容 REVISION RECORD
		DR	DATE
		T.Y	%/B/21
		H.H	%/B/22
		DR	DATE
		M.FUKUSHIMA	尺度 SCALE 10 : 1

	MOLEX-JAPAN CO.,LTD. 日本モレックス株式会社
REVISE ONLY ON CAD SYSTEM	
TITLE 名称 2.0 LOW PROFILE CRIMP RECEPTACLE	
DWG. NO.	REV
SD-50011-8*00	H

THIS DRAWING CONTAINS INFORMATION THAT IS PROPRIETARY TO MOLEX(JAPAN) AND SHOULD NOT BE USED WITHOUT WRITTEN PERMISSION
本図面は日本モレックス(株)の所有する情報を含むもので 当社の許可なく複製を禁止する。
EN-01C10321MXJ-32

8 7 6 5 4 3 2 1