

## **Excellent Integrated System Limited**

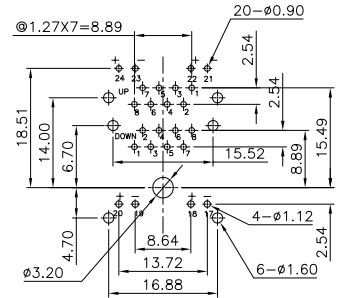
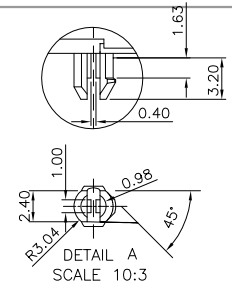
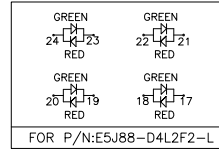
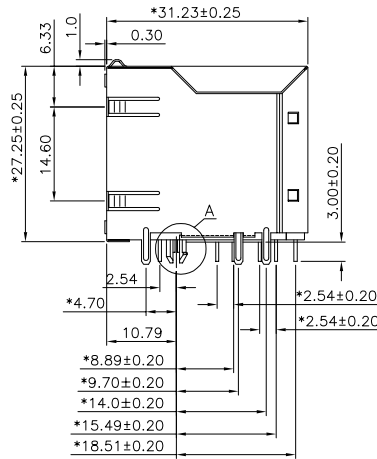
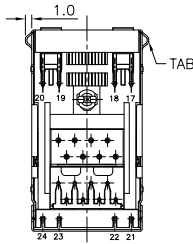
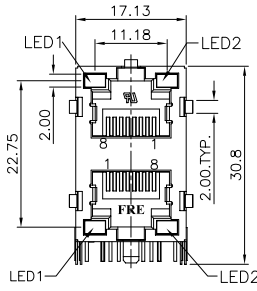
Stocking Distributor

Click to view price, real time Inventory, Delivery & Lifecycle Information:

[Pulse Electronics Corporation](#)  
[E5J88-A1L2F2-L](#)

For any questions, you can email us directly:

[sales@integrated-circuit.com](mailto:sales@integrated-circuit.com)



PC Board Layout Thickness=1.6mm  
Component Side Shown Tolerance±0.05mm

**NOTES:**

**ELECTRICAL:**

- VOLTAGE RATING : 125 VAC RMS.
- CURRENT RATING : 1.5 AMP.
- CONTACT RESISTANCE : 50 MILLIOHMS MAX.
- INSULATION RESISTANCE: 1000 MEGOHMS MIN @ 500 VDC.
- DIELECTRIC STRENGTH : 1000 VAC RMS 60Hz, 1MIN.

**MECHANICAL:**

- HOUSING MATERIAL : PBT, UL94V-0, COLOR BLACK.
- CONTACT MATERIAL : PHOSPHOR BRONZE Ø0.46mm.
- PLATING : GOLD PLATING OVER NICKEL.
- OPERATING LIFE : 750 CYCLES MIN.
- PCB RETENTION PRE-SOLDER : 1 LB MIN.
- PCB RETENTION POST-SOLDER : 10 LBS MIN.
- LED COLOR : OPTION

**ENVIRONMENTAL:**

- STORAGE : -40°C TO +85°C.
- OPERATION: -40°C TO +85°C.
- WAVE SOLDERING TEMPERATURE: 230~250°C(3~5 SECONDS)
- RoHS COMPLIANT.

MATES WITH MODULAR PLUG CONFORMING TO FCC PART 68, SUBPART F.

PART NUMBER	LED COLOR		TAB TYPE	GOLD PLATING
	LED 1	LED 2		
E5J88-A1L2F2-L	GREEN	GREEN	NO TAB	6u"
E5J88-A4L2F2-L	GREEN	GREEN	TOP & SIDE	6u"
E5J88-A4L2F4-L	GREEN	GREEN	TOP & SIDE	30u"
E5J88-C4L2F2-L	GREEN	YELLOW	TOP & SIDE	6u"
E5J88-D4L2F2-L	GREEN/RED	GREEN/RED	TOP & SIDE	6u"

<p>DETACHED LISTS</p> <p>MM (INCH)</p> <p>TOLERANCES EXCEPT AS NOTED</p> <p>MM ± 0.2</p> <p>.00 ± 0.15</p> <p>000 ± 0.075</p> <p>ANGLES ± 0.5</p> <p>THIRD ANGLE PROJECTION</p>	<p><b>Pulse</b> A TECHNICAL COMPANY</p> <p><b>RoHS Compliant</b></p> <p>DFTO Jeri Chi DATE 07/13/2006</p> <p>SCALE : 5:3</p>	<p><b>FULL RISE ELECTRONIC CO., LTD</b></p>	
		<p>TITLE <b>RJ45 LED JACK, 2x1PORTS</b></p> <p>DRAWING NO. CE5J3021-LC-01 SIZE REV /PART NO. SEE TABLE A3 0</p> <p>DO NOT SCALE DRAWING SHEET 1 OF 1</p>	

8

7

6

5

4

3

2

1

H  
G  
F  
E  
D  
C  
B  
A