

Excellent Integrated System Limited

Stocking Distributor

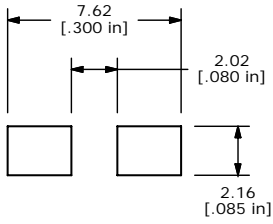
Click to view price, real time Inventory, Delivery & Lifecycle Information:

[E-Switch](#)
[TL3302AF130QJ](#)

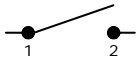
For any questions, you can email us directly:

sales@integrated-circuit.com

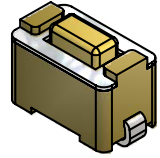
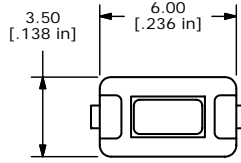
SHEET 1 OF 1



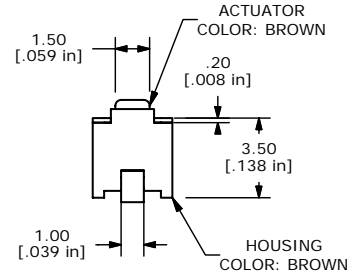
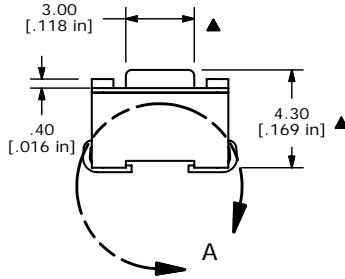
RECOMMENDED P.C.B. LAYOUT



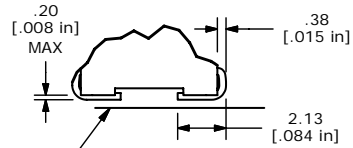
CIRCUIT: SPST



ISOMETRIC



- NOTES:
1. ALL DIMENSIONS IN MM [INCH]
 2. GENERAL TOLERANCE: X.X=±0.4
X.XX=±0.25
 3. TERM. NOS. FOR REFERENCE ONLY.
 4. RATING: 50mA @ 12VDC
 - ▲5. OPERATING FORCE: 130 ± 50gf
 6. TRAVEL: 0.25mm +0.2/-0.1
 7. CONTACT RESISTANCE: 100 MILLI OHMS MAX. (INITIAL)
 8. MECHANICAL/ELECTRICAL LIFE: 40,000 CYCLES.
 - ▲9. CONTACT MATERIAL: SILVER
 - ▲10. PACKAGE: TAPE AND REEL, 1800 PER
 11. ▲ DENOTES CRITICAL PARAMETER
 12. 2002/95/EC (ROHS) COMPLIANT



TERMINALS MUST BE COPLANAR WITHIN 0.10 [.004] TOTAL

DETAIL A

THE INFORMATION CONTAINED IN THIS DOCUMENT IS PROPRIETARY TO E-SWITCH AND IS NOT TO BE COPIED OR TRANSFERRED



REV	PCR NO	DESCRIPTION	DATE	BY
C	16719	CHANGED HOUSING TO BROWN	11/30/06	TN
B	16703	REVISED AND REDRAWN	11/27/06	TN

TITLE TL3302AF130QJ				
SCALE 4:1	DATE 11/30/2006	DR TN	DWG P020328	REV C