

Excellent Integrated System Limited

Stocking Distributor

Click to view price, real time Inventory, Delivery & Lifecycle Information:

[Hirose Electric Co Ltd](#)
[DM3D-SF](#)

For any questions, you can email us directly:

sales@integrated-circuit.com

APPLICABLE STANDARD		microSD Memory Card Specifications Ver 1.10		
RATING	OPERATING TEMPERATURE RANGE	-25 °C TO +85 °C (NOTE1)	STORAGE TEMPERATURE RANGE	-40 °C TO +85 °C
	VOLTAGE	AC 125V	OPERATING HUMIDITY RANGE	95%MAXIMUM (NON-CONDENSING)
	CURRENT	0.5A		

SPECIFICATIONS

ITEM	TEST METHOD	REQUIREMENTS	QT	AT
------	-------------	--------------	----	----

CONSTRUCTION

GENERAL EXAMINATION	VISUALLY AND BY MEASURING INSTRUMENT.	ACCORDING TO DRAWING.	X	X
MARKING	CONFIRMED VISUALLY.		X	X

ELECTRIC CHARACTERISTICS

CONTACT RESISTANCE MILLIVOLT LEVEL METHOD IEC60512-2-2a	OPEN VOLTAGE 20 mV AC MAX, TEST CURRENT 1mA.	INITIALLY 100 mΩ MAXIMUM (NOTE 2).	X	-
VOLTAGE PROOF IEC60512-2-4a	500 Vrms AC IS APPLIED FOR 1 MINUTE.	①NO FLASHOVER OR BREAKDOWN. ②CURRENT LEAKAGE 1mA MAXIMUM.	X	X
INSULATION RESISTANCE IEC60512-2-3a	MEASURE WITHIN 1 MINUTE AFTER APPLYING 500 V DC.	INITIALLY 1000 MΩ MINIMUM.	X	-

MECHANICAL CHARACTERISTICS

CARD INSERTION FORCE	MEASURED BY APPLICABLE CORD AT 25mm/min.	THE INITIAL STAGE:10 N MAX.	X	-
CARD EJECTION FORCE				
MECHANICAL OPERATION [OFFICE ENVIRONMENT] EIA364B class1.1	5,000 TIMES INSERTIONS AND WITH DRAWAL SHALL BE MADE AT THE CYCLE RATE LESS THAN 10 CYCLES PER 1 MINUTE.	① CONTACT RESISTANCE: AFTER TEST 40 mΩ MAXIMUM CHANGE. (CONTACT RESISTANCE REVERSION BY INSERTION AND EXTRACTION IS AVAILABLE) ② NO MECHANICAL DAMAGE SHALL OCCUR ON THE PARTS.	X	-
VIBRATION AND HIGH FREQUENCY IEC60512-4-6d	FREQUENCY 10 TO 55 TO 10 Hz/min, SINGLE AMPLITUDE 0.75 mm FOR 4 h IN 3 DIRECTIONS, TOTAL 12 h.	① NO ELECTRICAL DISCONTINUITY OF 100 ns. ② NO MECHANICAL DAMAGE SHALL OCCUR ON THE PARTS.	X	-
SHOCK IEC60512-4-6c	ACCELERATION 490m/s ² STANDARD HOLDING TIME 11 ms, SEMI-SINE WAVE FOR 3TIMES IN 3 DIRECTIONS, TOTAL 18 TIMES.		X	-

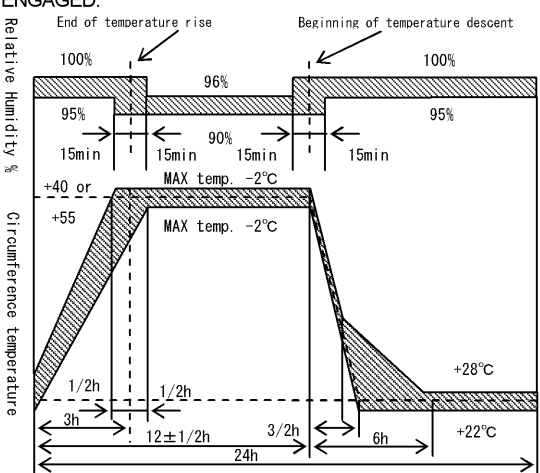
COUNT	DESCRIPTION OF REVISIONS	DESIGNED	CHECKED	DATE
△				

REMARK NOTE1:INCLUDE THE TEMPERATURE RISE BY CURRENT. NOTE 2:CONTACT RESISTANCE INCLUDES CONDUCTOR RESISTANCE.UNLESS OTHERWISE SPECIFIED, THE TEST SHOULD BE DONE UNDER TEMP. 15 TO 35°C, AIR PRESSURE 86 TO 106kPa, RELATIVE HUMIDITY 25 TO 85%.	APPROVED	KI. AKIYAMA	07. 04. 25
	CHECKED	OM. MIYAMOTO	07. 04. 25
	DESIGNED	KJ. NISHIWAKI	07. 03. 27
	DRAWN	KJ. NISHIWAKI	07. 03. 27

Note QT:Qualification Test AT:Assurance Test X:Applicable Test	DRAWING NO.	ELC4-156814-00
--	-------------	----------------

HRS	SPECIFICATION SHEET	PART NO.	DM3D-SF
	HIROSE ELECTRIC CO., LTD.	CODE NO.	CL609-0025-8-00

DRAWING FOR REFERENCE This is subject to change without notice

SPECIFICATIONS				
ITEM	TEST METHOD	REQUIREMENTS	QT	AT
ENVIRONMENTAL CHARACTERISTICS				
DAMP HEAT, CYCLIC IEC60512-6-11m	10 CYCLES (1 CYCLE=24 HOURS) WITH CONNECTORS ENGAGED. 	① CONTACT RESISTANCE: AFTER TEST 40 mΩ MAXIMUM CHANGE. ② INSULATION RESISTANCE: AFTER TEST 100 MΩ MINIMUM. ③ NO MECHANICAL DAMAGE OR HEAVY CORROSION SHALL OCCUR ON THE PARTS.	X	-
RAPID CHANGE OF TEMPERATURE IEC60512-6-11d	5 CYCLES (1 CYCLE=1 HOUR) WITH CONNECTORS ENGAGED. TEMPERATURE:-55 TO +85°C		X	-
DAMP HEAT IEC60512-6-11i	EXPOSED AT 85 °C FOR 96 HOURS WITH CONNECTORS ENGAGED.		X	-
COLD IEC60512-6-11j	EXPOSED AT -25 °C FOR 96 HOURS WITH CONNECTORS ENGAGED.		X	-
DAMP HEAT, STEADY STATE IEC60512-6-11c	EXPOSED AT 40 °C, 90 TO 95 % RH, 96 HOURS WITH CONNECTORS ENGAGED.		X	-
HYDROGEN SULFIDE JEIDA 38	EXPOSED IN 3 PPM HYDROGEN SULFIDE, APPROX. 40°C, 80% RH, 96 HOURS, WITH CONNECTORS ENGAGED.		X	-

DRAWING FOR REFERENCE: This drawing is subject to change without notice

Note QT:Qualification Test AT:Assurance Test X:Applicable Test DRAWING NO. ELC4-156814-00

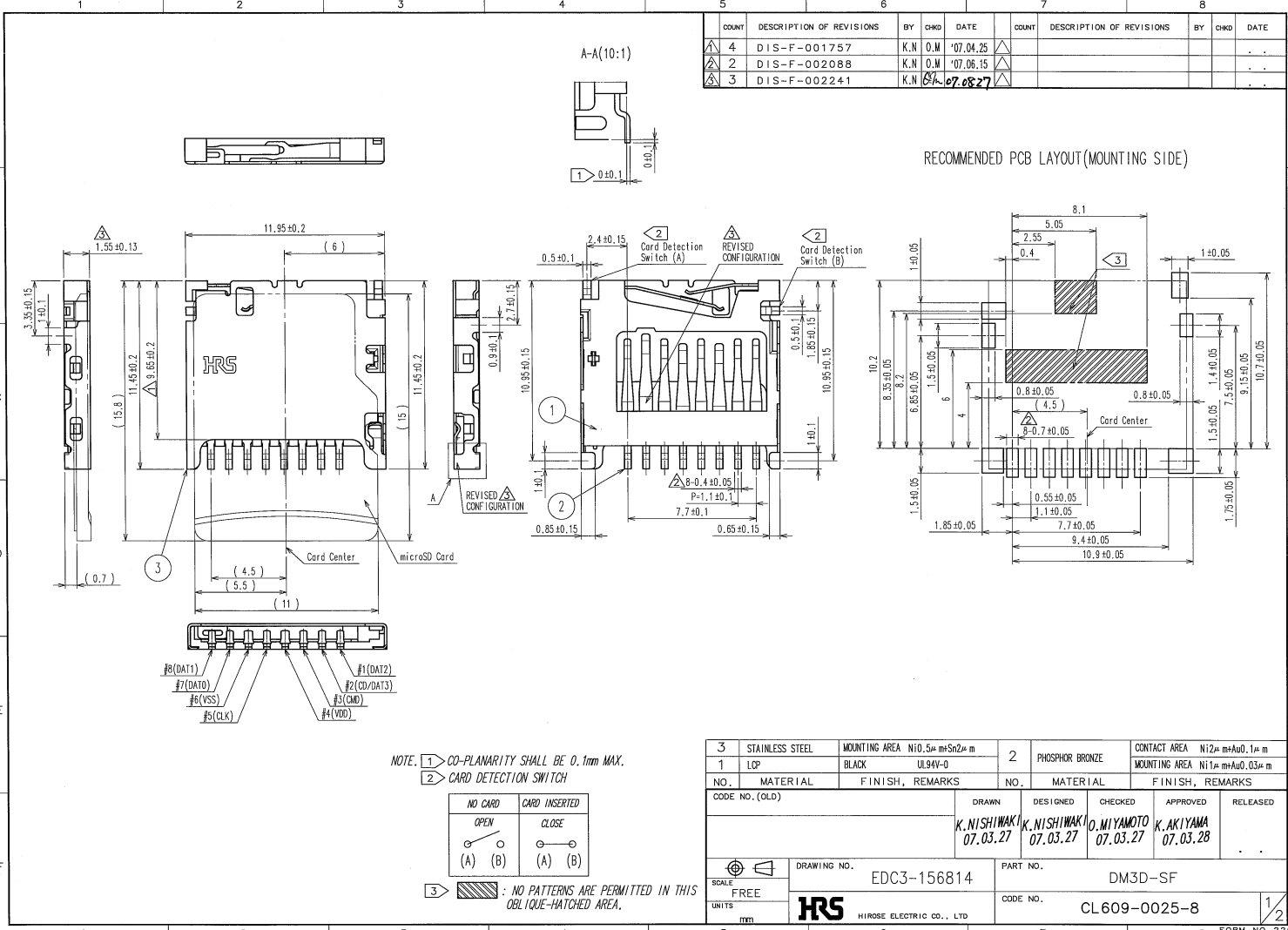
HRS SPECIFICATION SHEET PART NO. DM3D-SF

HIROSE ELECTRIC CO., LTD. CODE NO. CI 609-0025-8-00

DRAWING FOR REFERENCE: This is subject to change without notice

TO

COUNT	DESCRIPTION OF REVISIONS	BY	CHKD	DATE	COUNT	DESCRIPTION OF REVISIONS	BY	CHKD	DATE
4	DIS-F-001757	K.N	O.M	'07.04.25					
2	DIS-F-002088	K.N	O.M	'07.06.15					
3	DIS-F-002241	K.N	O.M	'07.08.27					



NO.	MATERIAL	FINISH, REMARKS	NO.	MATERIAL	FINISH, REMARKS
3	STAINLESS STEEL	MOUNTING AREA Ni10.5μmSn2μm	2	PHOSPHOR BRONZE	CONTACT AREA Ni12μmAu0.1μm
1	LCP	BLACK UL94V-0			MOUNTING AREA Ni1μmAu0.03μm

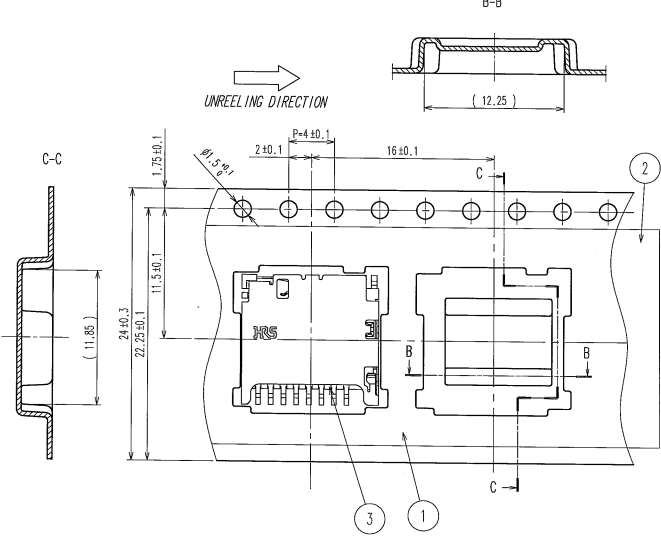
CODE NO. (OLD)	DRAWN	DESIGNED	CHECKED	APPROVED	RELEASED
	K. NISHIWAKI 07.03.27	K. NISHIWAKI 07.03.27	O. MIYAMOTO 07.03.27	K. AKIYAMA 07.03.28	

SCALE	FREE	DRAWING NO.	EDC3-156814	PART NO.	DM3D-SF
UNITS	mm	CODE NO.	CL609-0025-8		

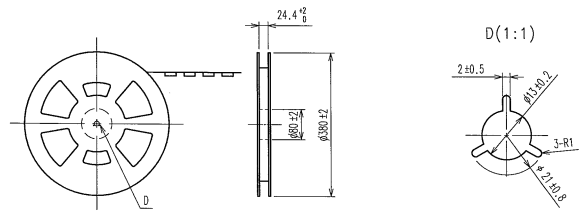
DRAWING FOR REFERENCE: This is subject to change without notice

REVISIONS				REVISIONS					
COUNT	DESCRIPTION OF REVISIONS	BY	CHKD	DATE	COUNT	DESCRIPTION OF REVISIONS	BY	CHKD	DATE

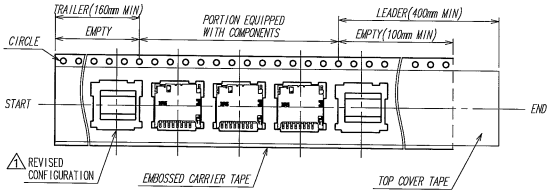
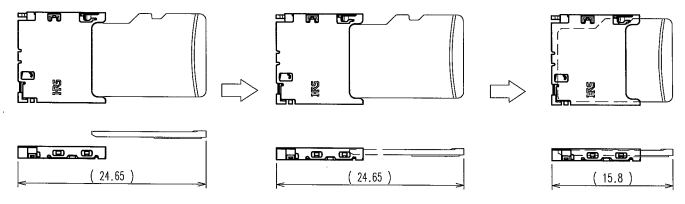
△ 4 DRAWING FOR PACKING



DETAIL OF REEL (1:10)



△ CARD INSERTION METHOD



REVISID CONFIGURATION, EMBOSSED CARRIER TAPE, TOP COVER TAPE

3	(CONNECTORS)
2	POLYESTER
1	PS

NO.	MATERIAL	FINISH, REMARKS	NO.	MATERIAL	FINISH, REMARKS

CODE NO. (OLD)	DRAWN	DESIGNED	CHECKED	APPROVED	RELEASED
	K. NISHIWAKI 07.03.27	K. NISHIWAKI 07.03.27	O. MIYAMOTO 07.03.27	K. AKIYAMA 07.03.28	

DRAWING NO.	EDC3-156814	PART NO.	DM3D-SF
SCALE	2:1	CODE NO.	CL609-0025-8
UNITS	mm		

NOTE: 4. PACKING TYPE: TAPE AND REEL, 2000PCS PER REEL.
 5. PLEASE REFER TO TECHNICAL SPECIFICATION : ETAD-F0353
 DM3D SERIES PRODUCT INFORMATION AND HANDLING INSTRUCTIONS
 FOR THE HANDLING OF THE PRODUCT.

TO