

Excellent Integrated System Limited

Stocking Distributor

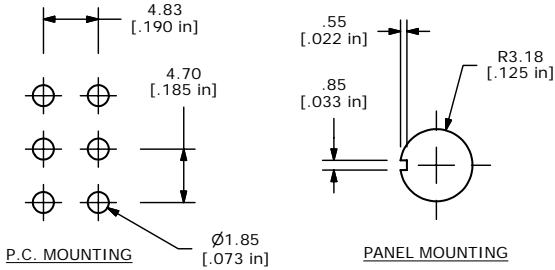
Click to view price, real time Inventory, Delivery & Lifecycle Information:

[E-Switch](#)
[100AWDP3T2B1M2QEH](#)

For any questions, you can email us directly:

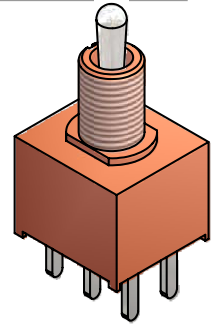
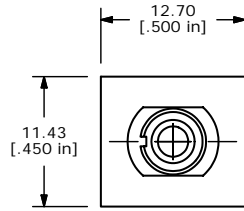
sales@integrated-circuit.com

SHEET 1 OF 1

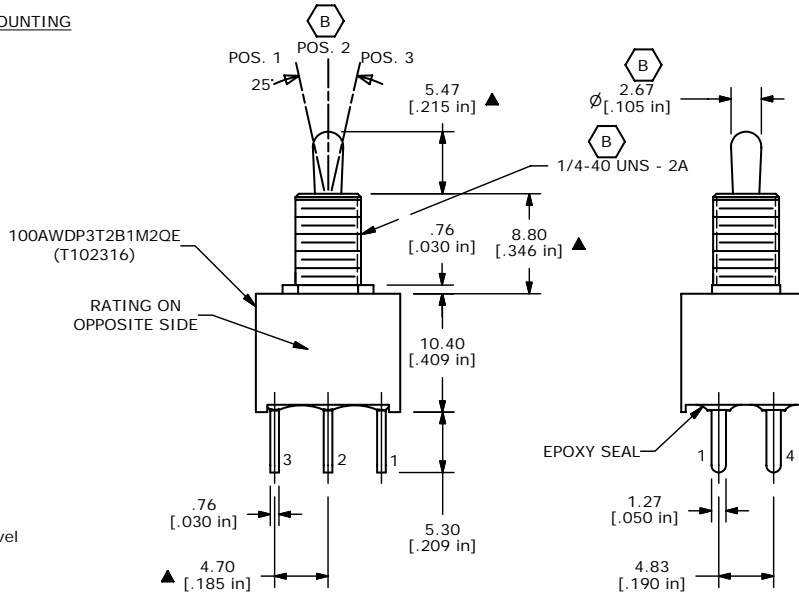


SWITCH FUNCTION		
POS. 1	POS. 2	POS. 3
ON	OFF	ON
2-3, 5-6	OPEN	2-1, 5-4

- NOTES:
- ALL DIMENSIONS IN MM [INCH]
 - GENERAL TOLERANCE: $x.x = \pm 0.4$
 $x.xx = \pm 0.25$
 - TERMINAL NOS. FOR REF. ONLY
 - PLATING MATERIAL: SILVER
 - RATING: 2A @ 250VAC
5A @ 120VAC or 28VDC
 - ELECTRICAL LIFE: 30,000 make-and-break cycles at full load
 - INSULATION RESISTANCE: 1,000mOHMS MIN
 - DIELECTRIC STRENGTH: 1,000V RMS @ sea level
 - OPERATING TEMPERATURE: -30°C to 85°C
 - ▲ DENOTES CRITICAL PARAMETER
 - 2002/95/EC (ROHS) COMPLIANT
 - HARDWARE TO BE SHIPPED BULK:
T100011 - LOCK WASHER, QTY 1
T100015 - LOCK RING, QTY 1
T100000 - HEX NUT, QTY 2



ISOMETRIC



B	16343	CLEANED UP DWG.	8/18/06	BO
A	16047	NEW PART RELEASE	5/19/06	CT
REV	PCR NO	DESCRIPTION	DATE	BY

TITLE 100AWDP3T2B1M2QE				
SCALE 2:1	DATE 5/19/2006	DR CT	DWG ST102316	REV B

THE INFORMATION CONTAINED IN THIS DOCUMENT IS PROPRIETARY TO E-SWITCH AND IS NOT TO BE COPIED OR TRANSFERRED