

## Excellent Integrated System Limited

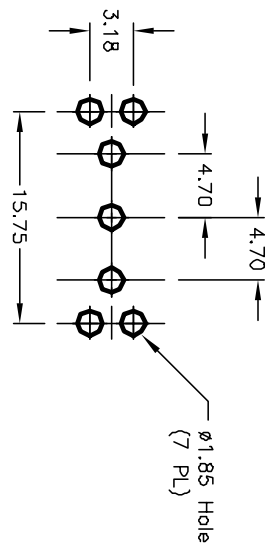
Stocking Distributor

Click to view price, real time Inventory, Delivery & Lifecycle Information:

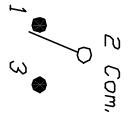
[E-Switch](#)  
[100SP3T1B4VS3QE](#)

For any questions, you can email us directly:

[sales@integrated-circuit.com](mailto:sales@integrated-circuit.com)



RECOMMENDED P.C.B. LAYOUT

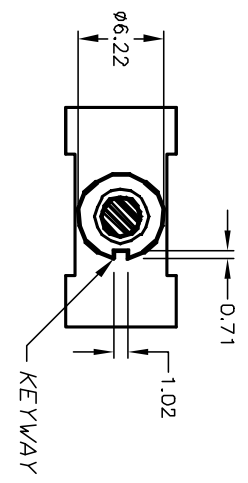


CIRCUIT: SPDT

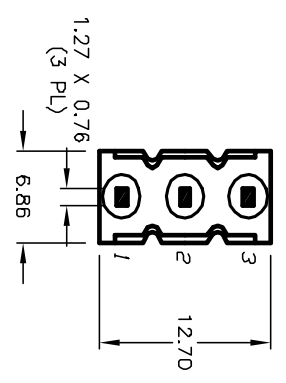
SWITCH FUNCTION			
POS. 1	POS. 2	POS. 3	
DN	DEF	DN	
2-3	DPEN	2-1	

NOTES:

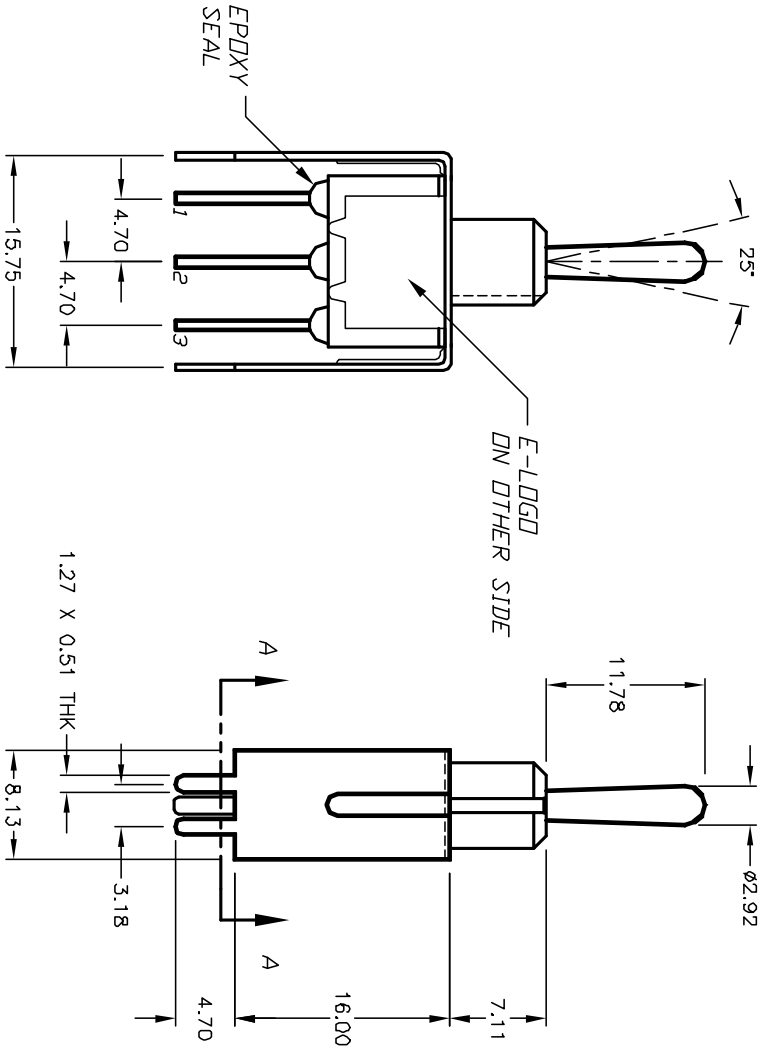
1. ALL DIMENSIONS IN MM
2. GENERAL TOLERANCE: X.X=±0.4  
X.XX=±0.25
3. TERM. NOS. FOR REF. ONLY
4. RATING: 5A @120VAC OR 28VDC  
2A @250VAC w/Resistive loads
5. FIXED TERM. & MOVING CONTACT:  
Copper alloy w/SILVER plate
6. ELECTRICAL LIFE: 50,000 make-and-break cycles at full load.
7. INSULATION RESISTANCE: 1000M ohm min.
8. DIELECTRIC STRENGTH: 1000V RMS min. @sec level.
9. OPERATING TEMP.: -30°C to +85°C



POS. 1 POS. 2 POS. 3



VIEW A-A



REV.	ECN No.	DESCRIPTION	DATE	CHKD
A	12045	RELEASED FOR PRODUCTION	4/8/02	CB

TITLE	SCALE	DATE	DR	DWG	REV
100 SP-3 T1 B4 VS3 Q E	2:1	4/8/02	CB	T113014	A

**E-SWITCH®**

THE INFORMATION CONTAINED IN THIS DOCUMENT IS PROPRIETARY TO E-SWITCH AND IS NOT TO BE COPIED OR TRANSMITTED