

Excellent Integrated System Limited

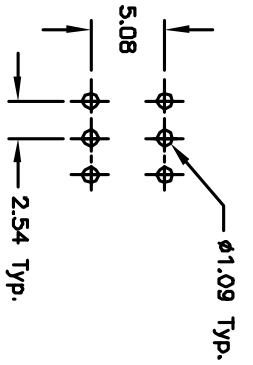
Stocking Distributor

Click to view price, real time Inventory, Delivery & Lifecycle Information:

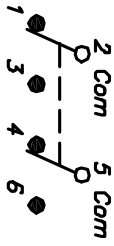
[E-Switch](#)
[200MDP1T1B2M2RE](#)

For any questions, you can email us directly:
sales@integrated-circuit.com

SHEET OF



RECOMMENDED P.C.B. LAYOUT

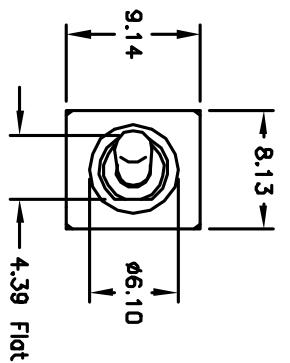
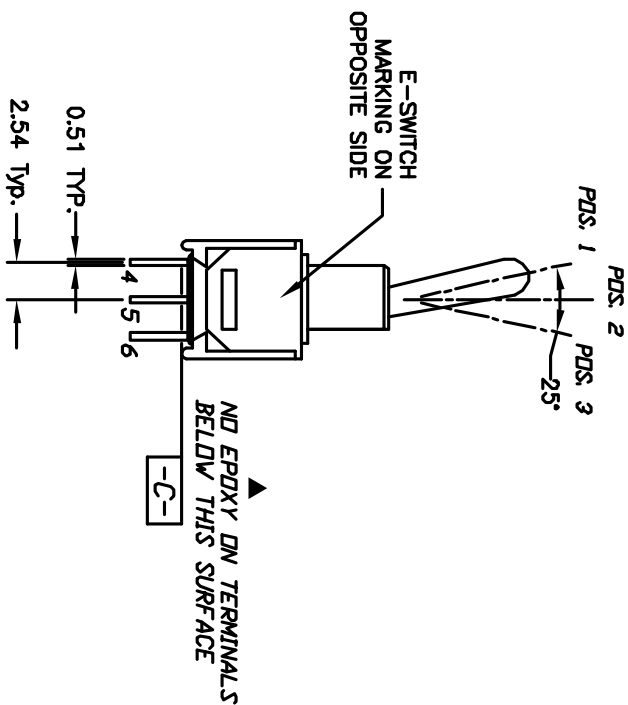
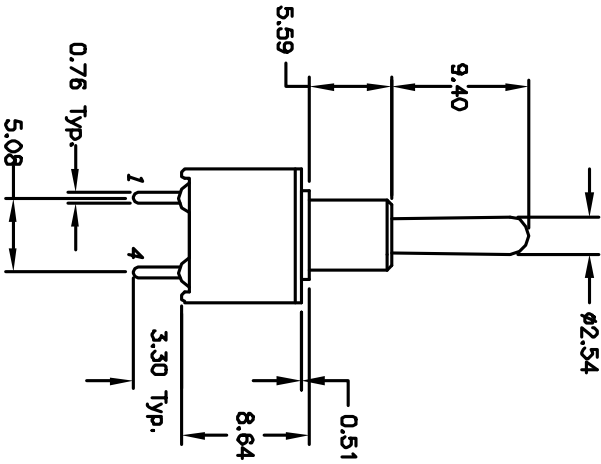


CIRCUIT: DPDT CONTACT CONFIGURATION

SWITCH FUNCTION		
PDS. 1	PDS. 2	PDS. 3
DN	NONE	DN
2-3,5-6	DPEN	P-1,5-4

NOTES:

1. ALL DIMENSIONS IN MM
2. GENERAL TOLERANCE: X.X=±0.4 X.XX=±0.25
3. TERM. NOS. FOR REF. ONLY
4. CONTACT RATING: 0.4VA max. $\phi 20$ VAC or DC
5. FIXED TERM/MOVING CONTACT: COPPER ALLOY w/GOLD PLATE OVER Nickel plate.
6. ELECTRIC LIFE: 50,000 make-and-break cycles at full load.
7. INSULATION RESISTANCE: 1,000 M ohm min.
8. DIELECTRIC STRENGTH: 1,000 V RMS ϕ see level.
9. OPERATING TEMP.: -30°C to +85°C



REV.	ECN No.	DESCRIPTION	DATE	CHKD
B	12664	REV DIMENSION, add notes	12/26/02	CB
A	10691	RELEASED FOR PRODUCTION	6/19/00	GLG

TITLE	SCALE	DATE	DR	JWG	REV
200 MDP-1 T1 B2 M2 R E (GOLD CONTACTS)	2:1	6/19/00	GLG	T221024	B

E-SWITCH®

THE INFORMATION CONTAINED IN THIS DOCUMENT IS PROPRIETARY TO E-SWITCH AND IS NOT TO BE COPIED OR TRANSMITTED