

Excellent Integrated System Limited

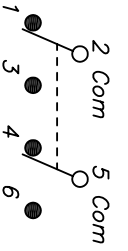
Stocking Distributor

Click to view price, real time Inventory, Delivery & Lifecycle Information:

[E-Switch](#)
[200MDP1T2B2M7RE](#)

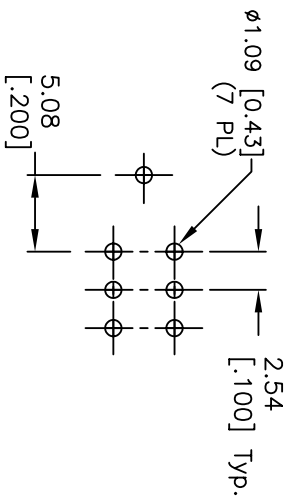
For any questions, you can email us directly:

sales@integrated-circuit.com

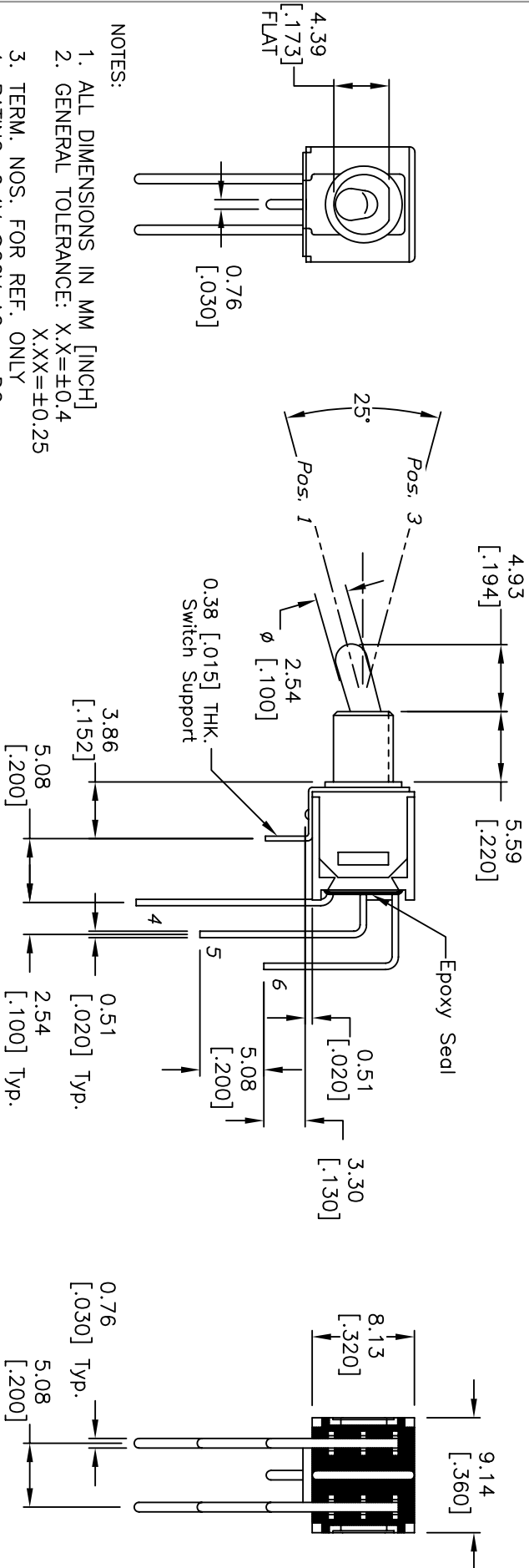


CIRCUIT: DPDT
 CONTACT CONFIGURATION

SWITCH FUNCTION		
PDS. 1	PDS. 2	PDS. 3
DN	N/DNE	DN
2-3,5-6	DPEN	2-1,5-4



RECOMMENDED P.C.B. LAYOUT



NOTES:

1. ALL DIMENSIONS IN MM [INCH]
2. GENERAL TOLERANCE: X.X=±0.4 X.XX=±0.25
3. TERM. NOS. FOR REF. ONLY
4. RATING: 0.4V @20V AC or DC
5. FIXED TERM. MOVING CONTACT:
Copper Alloy w/GOLD plating
over Nickel plate.

6. ELECTRICAL LIFE: 30,000 make-and-break cycle at full load.
7. DIELECTRIC STRENGTH: 1,000 V RMS @sea level.
8. OPERATING TEMP.: -30°C to 85°C

E-SWITCH®

TITLE: 200 MDP-1 T2 B2 M7 R E (GOLD CONTACTS)

REV.	ECN No.	DESCRIPTION	DATE	CHKD	PH
B	15183	CHANGED DIM FROM 5.33 TO 4.93	8/19/2005	CJB	
A	12132	RELEASED FOR PRODUCTION	5/8/02	CJB	

THE INFORMATION CONTAINED IN THIS DOCUMENT IS PROPRIETARY TO E-SWITCH AND IS NOT TO BE COPIED OR TRANSMITTED

SCALE	DATE	DR	DWG	REV
2:1	5/8/02	CJB	T221035	B