

Excellent Integrated System Limited

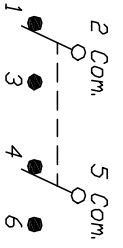
Stocking Distributor

Click to view price, real time Inventory, Delivery & Lifecycle Information:


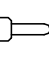
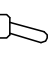
[E-Switch](#)
[200MDP1T4B5M1QE](#)

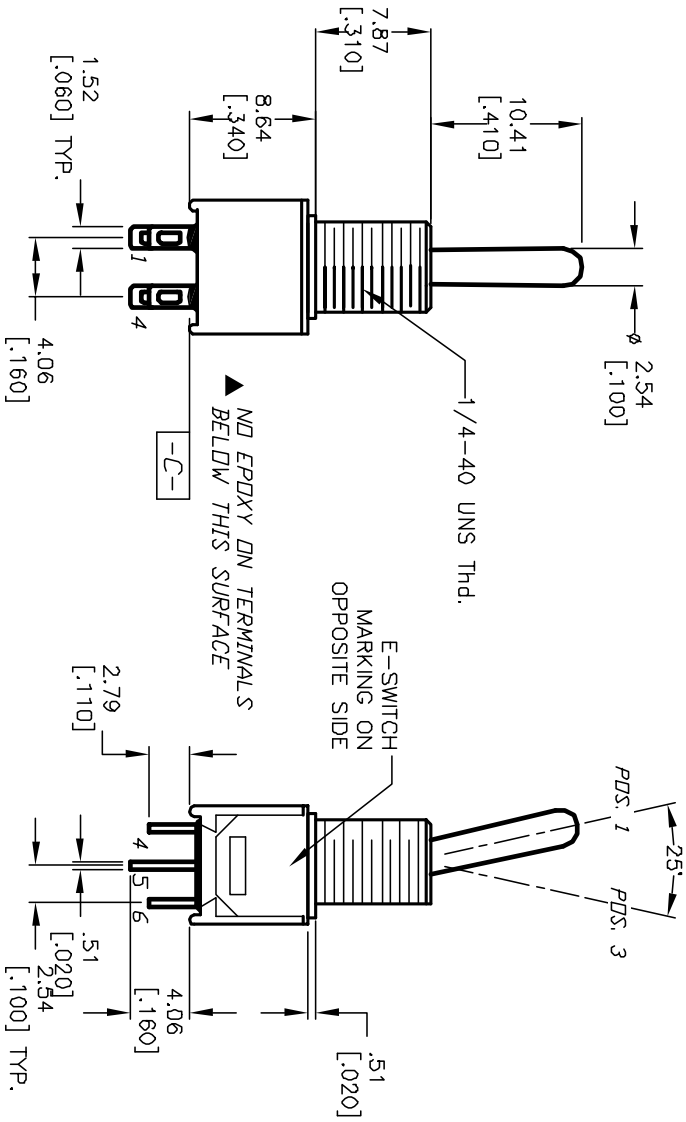
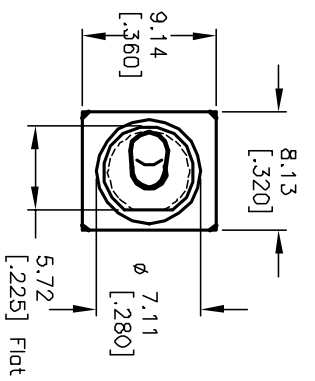
For any questions, you can email us directly:

sales@integrated-circuit.com



CIRCUIT: DPDT
CONTACT CONFIGURATION

SWITCH FUNCTION		
PDS: 1	PDS: 2	PDS: 3
		
DN	NONE	DN
2-3-5-6	OPEN	2-1-5-4



NOTES:

1. ALL DIMENSIONS IN MM [INCH]
2. GENERAL TOLERANCE: X.X=±0.4
X.XX=±0.25
3. TERM. NOS. FOR REF. ONLY
4. CONTACT RATING: 3A @120VAC or 28VDC;
1A @250VAC
5. FIXED TERMINAL & MOVING CONTACT:
Copper alloy w/Silver plate.
6. ELECTRIC LIFE: 30,000 make-and-break cycles
at full load.
7. INSULATION RESISTANCE: 1,000 M ohm min.
8. DIELECTRIC STRENGTH: 1,000 V RMS @sea level.
9. OPERATING TEMP.: -30°C to 85°C
10. DESIGNATE MAJOR FEATURE:

REV.	ECN No.	DESCRIPTION	DATE	CHKD
A	11636	RELEASED FOR PRODUCTION	8/31/01	CJB

TITLE	SCALE	DATE	DR	DWG	REV
200 MDP-1 T4 B5 M1 Q E	2:1	8/31/01	CJB	T221031	A

E-SWITCH®

THE INFORMATION CONTAINED IN THIS DOCUMENT IS PROPRIETARY TO E-SWITCH AND IS NOT TO BE COPIED OR TRANSMITTED