

Excellent Integrated System Limited

Stocking Distributor

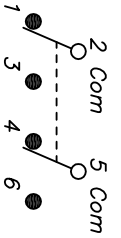
Click to view price, real time Inventory, Delivery & Lifecycle Information:

[E-Switch](#)
[200MDP1T5B4M7QE](#)

For any questions, you can email us directly:

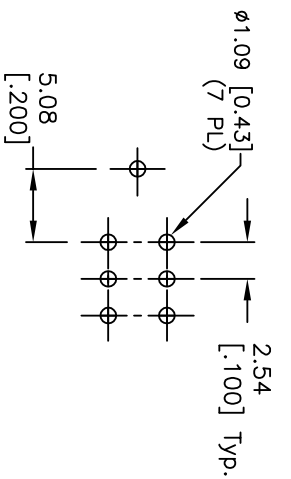
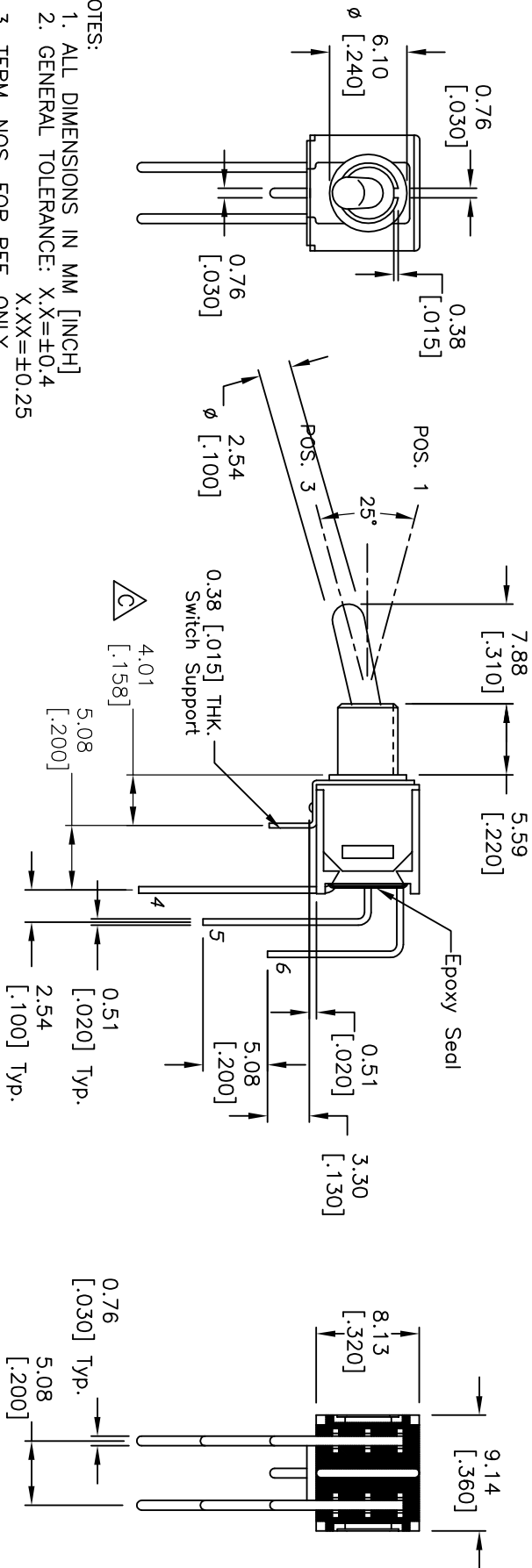
sales@integrated-circuit.com

SHEET OF



CIRCUIT: DPDT
 CONTACT CONFIGURATION

SWITCH FUNCTION		
POS. 1	POS. 2	POS. 3
DN	NDNE	DN
2-3,5-6	DPEN	2-1,5-4



RECOMMENDED P.C.B. LAYOUT

- NOTES:
1. ALL DIMENSIONS IN MM [INCH]
 2. GENERAL TOLERANCE: X.X=±0.4
X.XX=±0.25
 3. TERM. NOS. FOR REF. ONLY
 4. RATING: 3A @120VAC or 28VDC; 1A @250VAC.
 5. FIXED TERM. MOVING CONTACT: Copper Alloy w/Silver plating
 6. ELECTRICAL LIFE: 30,000 make-and-break cycle
at full load.
 7. DIELECTRIC STRENGTH: 1,000 V RMS @sea level.
 8. OPERATING TEMP.: -30°C to 85°C

REV.	ECN No.	DESCRIPTION	DATE	CHKD
C	18232	DIM EDIT (WAS 3863)	9/3/08	BLR
B	12110	REVISED AND REDRAWN	5/1/02	CJB
		DESCRIPTION		

SCALE	DATE	DR	DWG	REV
2:1	9/3/08	BLR	T221013	C

TITLE: 200 MDP-1 TS B4 M7 Q E

THE INFORMATION CONTAINED IN THIS DOCUMENT IS PROPRIETARY TO E-SWITCH AND IS NOT TO BE COPIED OR TRANSFERRED