

Excellent Integrated System Limited

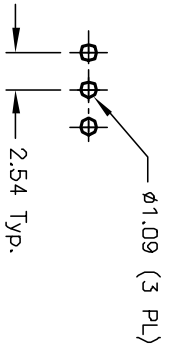
Stocking Distributor

Click to view price, real time Inventory, Delivery & Lifecycle Information:

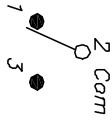
[E-Switch](#)
[200MSP4T1B5M2QE](#)

For any questions, you can email us directly:

sales@integrated-circuit.com



RECOMMENDED P.C.B. LAYOUT



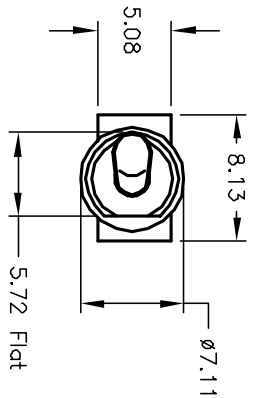
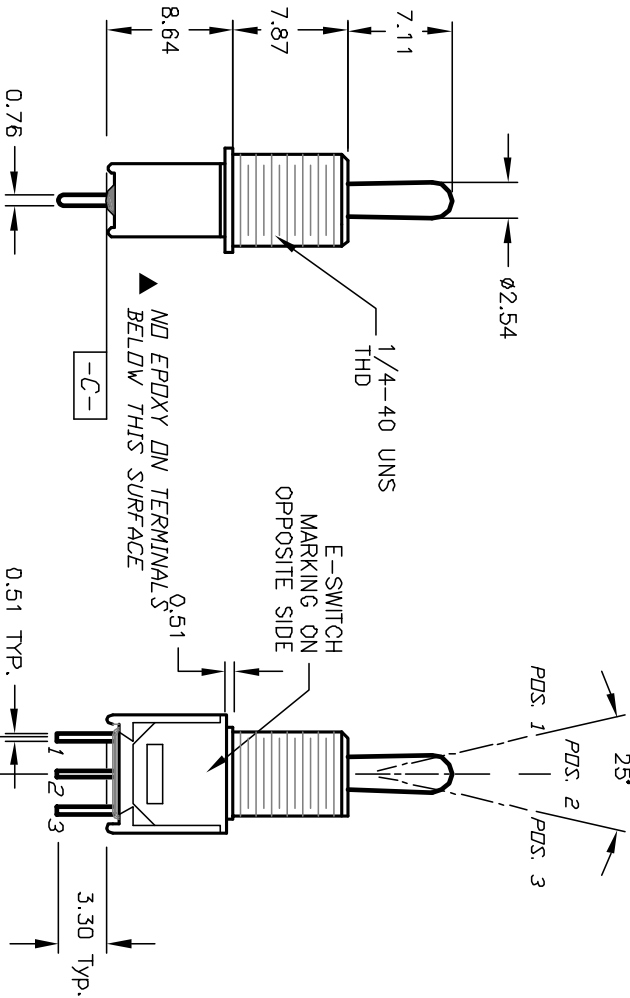
CIRCUIT: SPDT

SWITCH FUNCTION		
POS. 1	POS. 2	POS. 3
(DN)	(OFF)	(DN)
2-3	DPEN	2-1

()=Mandatory

NOTES:

1. ALL DIMENSIONS IN MM
2. GENERAL TOLERANCE: X.X=±0.4
X.XX=±0.25
3. TERM. NOS. FOR REF. ONLY
4. CONTACT RATING: 3A @120VAC OR 28VDC,
1A @250VAC
5. FIXED TERM./MOVING CONTACT
COPPER ALLOY W/SILVER PLATE.
6. ELECTRIC LIFE: 30,000 make-and-break cycles
at full load.
7. INSULATION RESISTANCE: 1,000 M ohm min.
8. DIELECTRIC STRENGTH: 1,000 V RMS @sea level.
9. OPERATING TEMP. -30°C to 85°C
10. ▲ DESIGNATE MAJOR FEATURE



REV.	ECN No.	DESCRIPTION	DATE	CHKD
A	12587	RELEASED FOR PRODUCTION	11/20/02	CJB

TITLE	SCALE	DATE	DR	DWG	REV
200 MSP-4 T2 B1 M2 Q E	2:1	11/20/02	CJB	T214050	A

E-SWITCH®

THE INFORMATION CONTAINED IN THIS DOCUMENT IS PROPRIETARY TO E-SWITCH AND IS NOT TO BE COPIED OR TRANSMITTED