

Excellent Integrated System Limited

Stocking Distributor

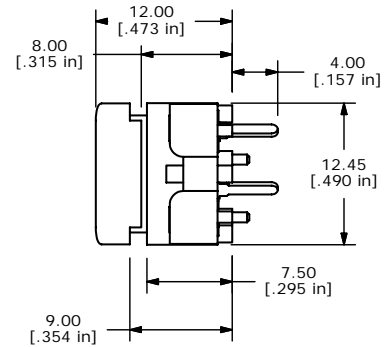
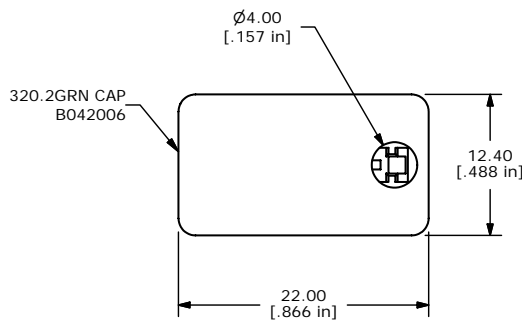
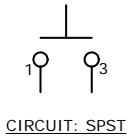
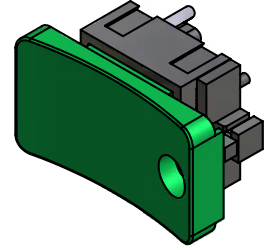
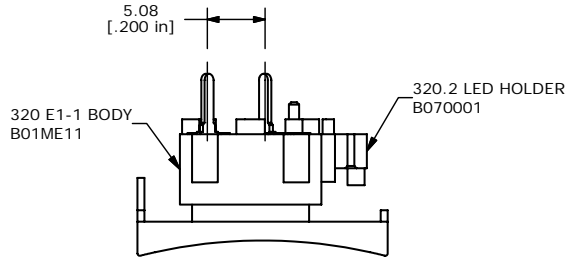
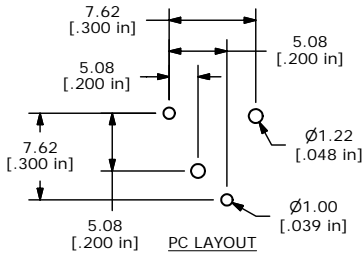
Click to view price, real time Inventory, Delivery & Lifecycle Information:

[E-Switch](#)
[320.2E11GRN](#)

For any questions, you can email us directly:

sales@integrated-circuit.com

SHEET 1 OF 1



- NOTES:
1. ALL DIMENSIONS IN MM [INCH]
 2. GENERAL TOLERANCE X.X=±0.4
X.XX=±0.25
 3. TERMINAL NUMBERS FOR REF. ONLY
 4. CONTACT RATING: 25mA, 50 VDC
 5. TRAVEL: 0.7mm
 6. OPERATING FORCE: 120gf
 - ▲ 7. USES E1-1 CONTACT DOME (B050001)
 8. ▲ DENOTES CRITICAL PARAMETER.



TITLE 320.2E11GRN W/ LED HOLDER

A	15845	NEW RELEASE	3/6/06	PH
REV	PCR NO	DESCRIPTION	DATE	BY

THE INFORMATION CONTAINED IN THIS DOCUMENT IS PROPRIETARY TO E-SWITCH AND IS NOT TO BE COPIED OR TRANSFERRED

SCALE	DATE	DR	DWG	REV
2:1	3/6/2006	PH	XB0787A	A