

Excellent Integrated System Limited

Stocking Distributor

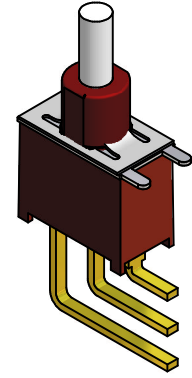
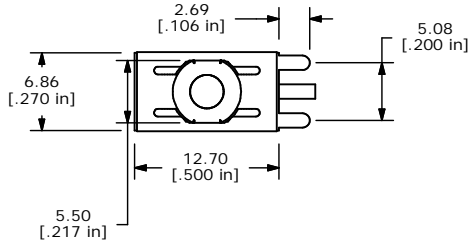
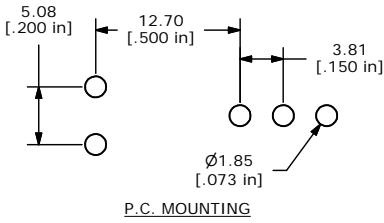
Click to view price, real time Inventory, Delivery & Lifecycle Information:

[E-Switch](#)
[700ASP7B21M7RE](#)

For any questions, you can email us directly:

sales@integrated-circuit.com

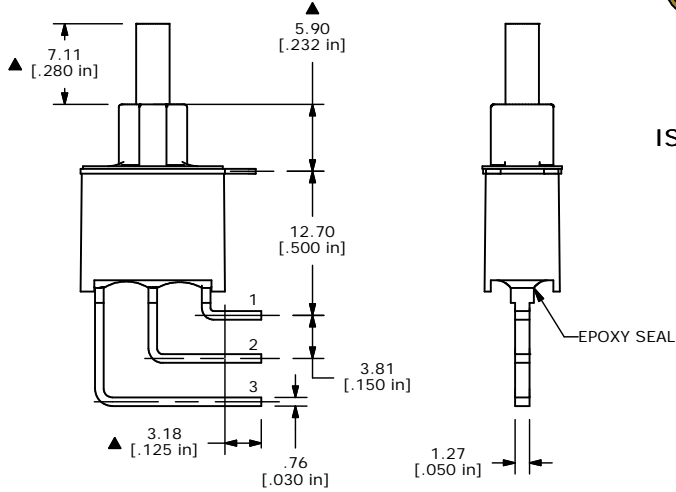
SHEET 1 OF 1



ISOMETRIC

SWITCH FUNCTION	
POS. 1	POS. 2
ON	(ON)
1-3	1-2

(ON) = MOMENTARY



- NOTE:
1. ALL DIMENSIONS IN MM [INCH]
 2. GENERAL TOLERANCE: X.X=±0.4
X.XX=±0.25
 3. TERMINAL NUMBERS FOR REF ONLY
 - ▲ 4. PLATING MATERIAL: GOLD
 5. RATING: 0.4 VOLT-AMPS @20V MAX (AC OR DC)
 6. ELECTRIC LIFE: 50,000 make-and-break cycles at full load.
 7. INSULATION RESISTANCE: 1,000 Mega-ohm min.
 8. DIELECTRIC STRENGTH: 1,500 V RMS @sea level.
 9. OPERATING TEMP.: -30°C to 75°C
 10. ▲ DENOTES CRITICAL PARAMETER.



A	14505	RELEASED FOR PRODUCTION	11/15/04	AR
REV	PCR NO	DESCRIPTION	DATE	BY

TITLE 700ASP7B21M7RE				
SCALE 2:1	DATE 6/8/04	DR AR	DWG T750002	REV A

THE INFORMATION CONTAINED IN THIS DOCUMENT IS PROPRIETARY TO E-SWITCH AND IS NOT TO BE COPIED OR TRANSFERRED