

Excellent Integrated System Limited

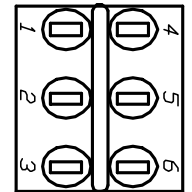
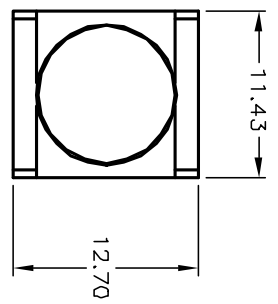
Stocking Distributor

Click to view price, real time Inventory, Delivery & Lifecycle Information:

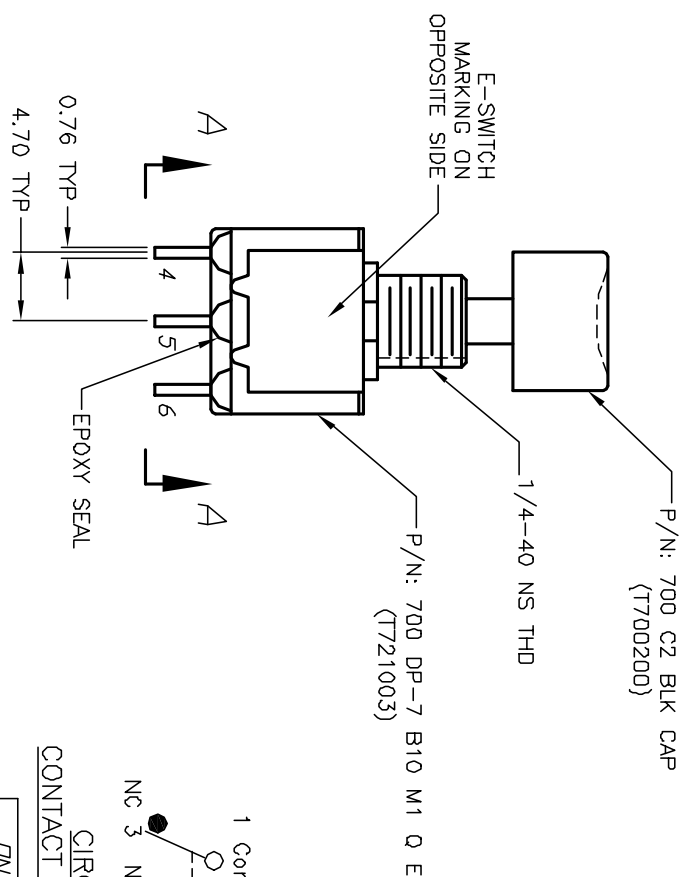
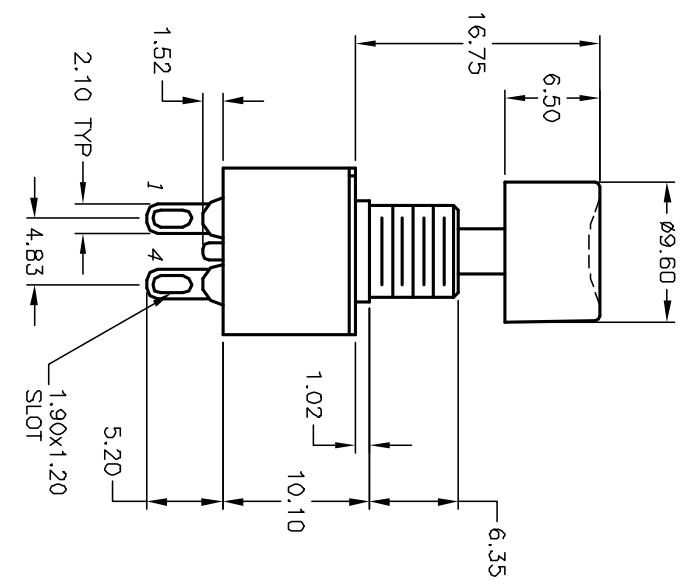
[E-Switch](#)
[700DP7B10M1QEC2BLK](#)

For any questions, you can email us directly:

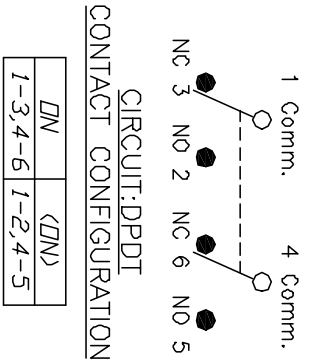
sales@integrated-circuit.com



VIEW A-A



- NOTES:
1. ALL DIMENSIONS IN MM
 2. GENERAL TOLERANCE: 0.0=±0.4
0.00=±0.25
 3. TERM. NOS. FOR REF. ONLY
 4. RATING: 1A @120V AC or 28V DC.
 5. ELECTRICAL LIFE: 50,000 make-and-break cycles at full load.
 6. INSULATION RESISTANCE: 1,000 mega-ohm
 7. DIELECTRIC STRENGTH: 1,000 V RMS @sea level
 8. OPERATING TEMP.: -30°C to 85°C



< > MOMENTARY

REV.	A	ECN NO.	10818	RELEASED FOR PRODUCTION	7/28/00	MM	MM
				DESCRIPTION	DATE	CHKD	

THE INFORMATION CONTAINED IN THIS DOCUMENT IS PROPRIETARY TO E-SWITCH AND IS NOT TO BE COPIED OR TRANSMITTED

TITLE	700 DP-7 B10 M1 Q E/C2 BLK CAP			SCALE	2:1	DATE	7/28/00	DR	MM	DWG	XT0076A	REV	A
-------	--------------------------------	--	--	-------	-----	------	---------	----	----	-----	---------	-----	---

E-SWITCH®