

Excellent Integrated System Limited

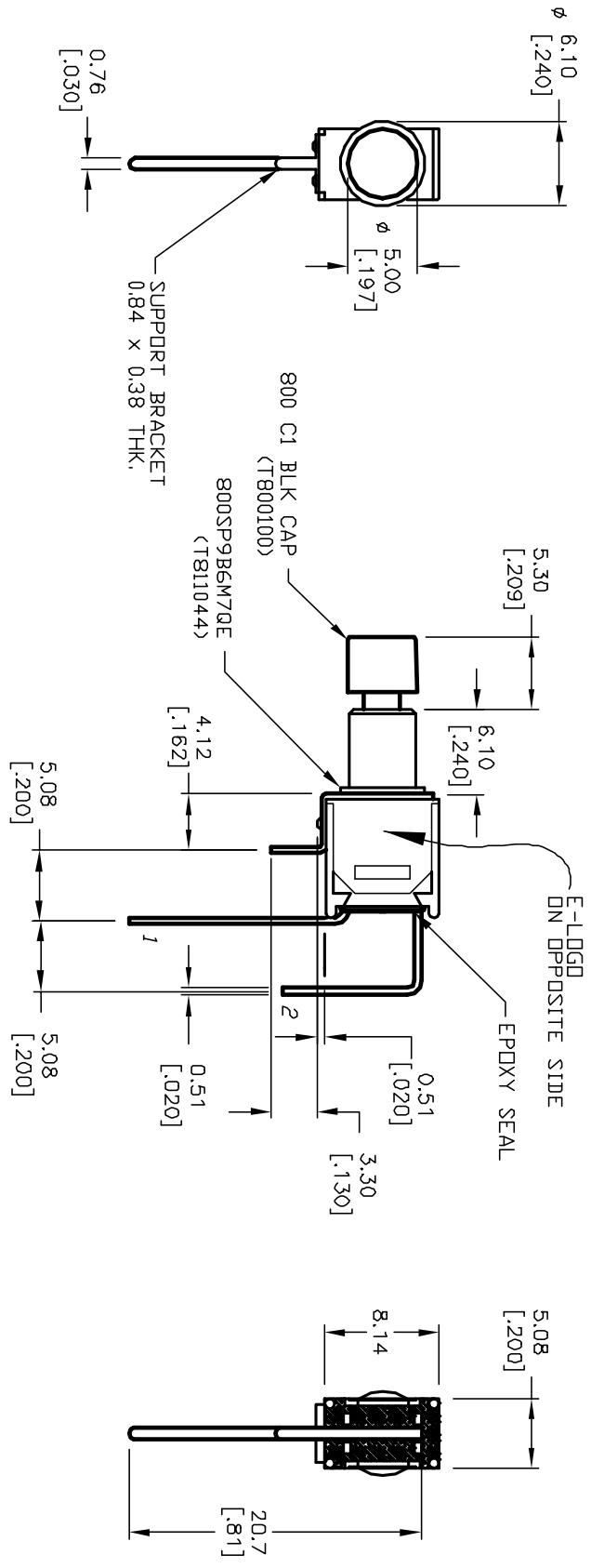
Stocking Distributor

Click to view price, real time Inventory, Delivery & Lifecycle Information:

[E-Switch](#)
[800SP9B6M7QEC1BLK](#)

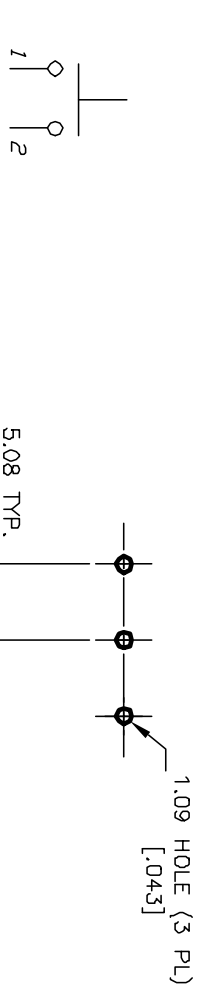
For any questions, you can email us directly:

sales@integrated-circuit.com



NOTES:

1. ALL DIMENSIONS IN MM [INCH]
2. GENERAL TOLERANCE: X.X=±0.4 X.XX=±0.25
3. TERM. NOS. FOR REF. ONLY
4. CONTACT RATING: 3A @120VAC; 1A @250VAC
5. FIXED TERMINAL & MOVING CONTACT:
Copper alloy w/Silver plate
6. ELECTRICAL LIFE: 50,000 make-and-break cycle at full load.
7. CONTACT RESISTANCE: 10milli-Ohms max., Typical @2-4VDC
8. INSULATION RESISTANCE: 1,000Mega-Ohms
9. DIELECTRIC STRENGTH: 1,000 V RMS @sea level.
10. OPERATING TEMP.: -30°C to 85°C



CIRCUIT DIAGRAM

RECOMMENDED P.C.B. LAYOUT

DEF (DN)

() =Momentary

REV.	ECN No.	DESCRIPTION	DATE	CHKD
A	12219	RELEASED FOR PRODUCTION	6/11/02	CJB

TITLE	SCALE	DATE	DR	DWG	REV
800 SP-9 B6 M7 QE/C1-BLK	2:1	6/11/02	CJB	XT0097P	A

E-SWITCH®

THE INFORMATION CONTAINED IN THIS DOCUMENT IS PROPRIETARY TO E-SWITCH AND IS NOT TO BE COPIED OR TRANSMITTED