

Excellent Integrated System Limited

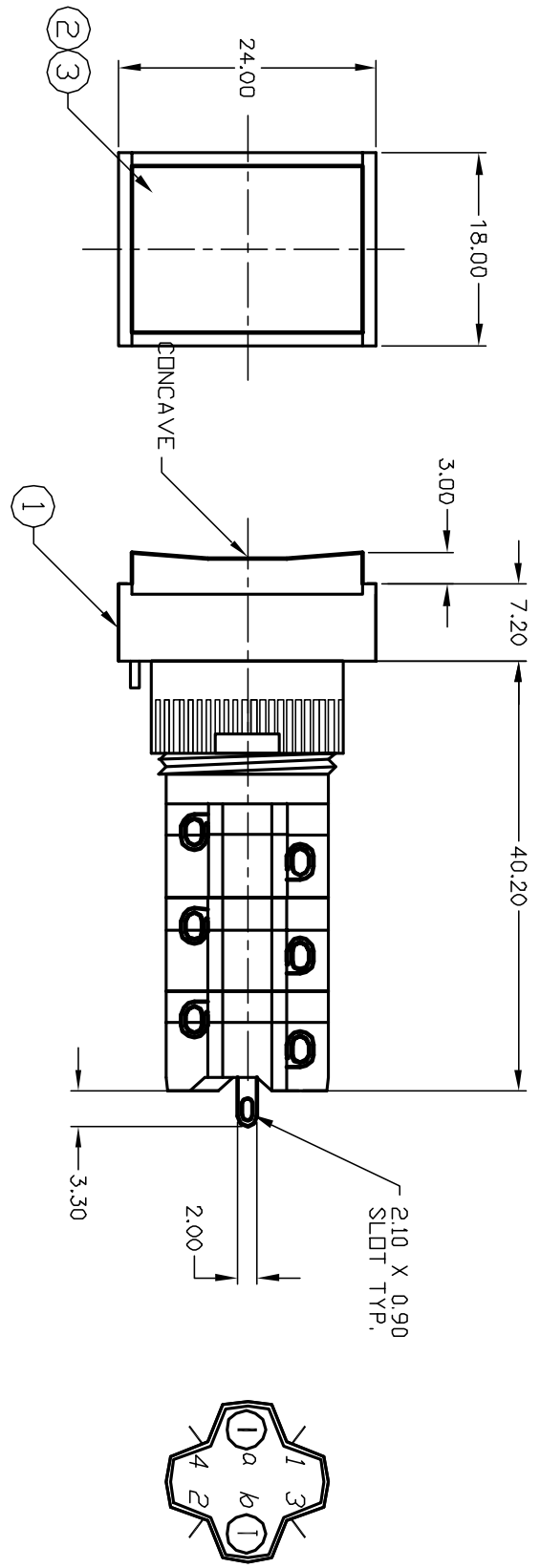
Stocking Distributor

Click to view price, real time Inventory, Delivery & Lifecycle Information:

[E-Switch](#)
[D16EET13KREDRED](#)

For any questions, you can email us directly:

sales@integrated-circuit.com



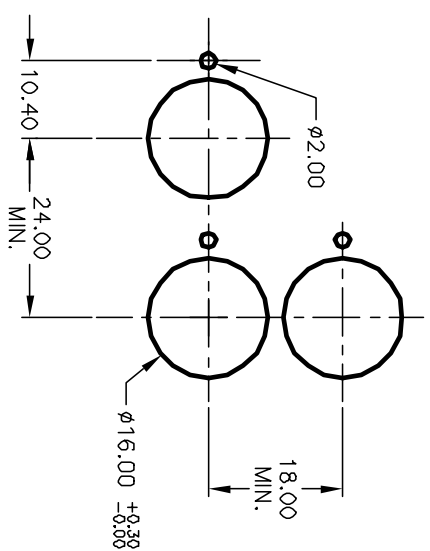
1 0 1 0 2
 3 0 0 4
 a-L-b (+)

CONTACT CONFIGURATION
 SPST

ITEM	QTY.	PART NO.	PART DESCRIPTION
1	1	F040024	D16 EE T1 3
2	1	F050412	50-004-12 (RED NEON BULB.)
3	1	F050204	50-002-04 (TRANSPARENT RED lens)

NOTES:

1. ALL DIMENSIONS IN MM
2. GENERAL TOLERANCE: X.X=±0.4
X.XX=±0.25
3. RATINGS: 5A@250V AC,
8A@125V AC
4. LAMP VOLTAGE: 110VAC (NEON BULB)
5. CONTACT MATERIAL: COPPER ALLOY w/Gold Plating
6. TRAVEL: 3.0mm (Total)
7. MECHANICAL LIFE: >100,000 Cycles
8. ELECTRICAL LIFE: >50,000 Cycles
9. INSULATION RESISTANCE: >1000 MILLI-OHMS
10. OPERATING TEMP: -20°C to 55°C



E-SWITCH®

REV.	ECN No.	DESCRIPTION	DATE	CHKD
A	12387	RELEASE FOR PRODUCTION	8/27/02	CJB

TITLE	SCALE	DATE	DR	DWG	REV
D16 EE T13 K RED RED TRANSPARENT/CONCAVE LENS	1.5:1	8/27/02	CB	XF0501P	A

THE INFORMATION CONTAINED IN THIS DOCUMENT
 IS PROPRIETARY TO E-SWITCH AND IS
 NOT TO BE COPIED OR TRANSMITTED