

Excellent Integrated System Limited

Stocking Distributor

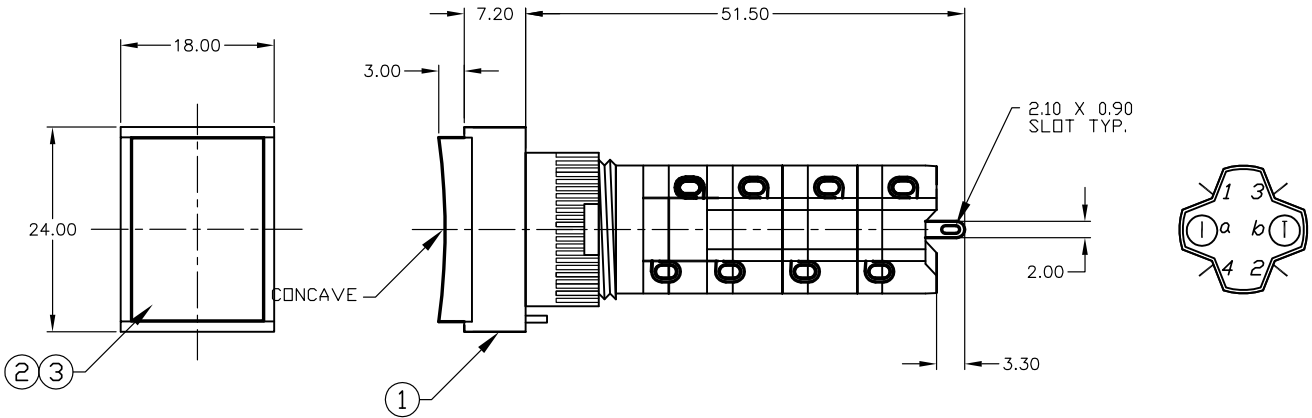
Click to view price, real time Inventory, Delivery & Lifecycle Information:

[E-Switch](#)
[D16EET14CWHT](#)

For any questions, you can email us directly:

sales@integrated-circuit.com

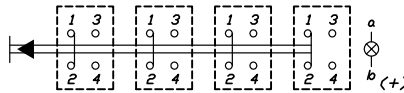
SHEET OF



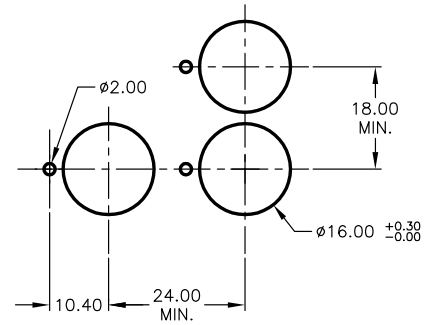
PARTS LIST			
ITEM	QTY.	PART NO.	PART DESCRIPTION
1	1	F040040	D16 EE T1 4
2	1	F050405	50-004-05 (INCANDESCENT)
3	1	F050205	50-002-05 (TRANSPARENT WHT lens)

NOTES:

- ALL DIMENSIONS IN MM
- GENERAL TOLERANCE: X.X=±0.4
X.XX=±0.25
- RATINGS: 5A@250V AC,
8A@125V AC
- LAMP VOLTAGE: 28V AC/DC @40mA (Incandescent)
- CONTACT MATERIAL: COPPER ALLOY W/Gold Plating
- TRAVEL: 3.0mm (Total)
- MECHANICAL LIFE: >100,000 Cycles
- ELECTRICAL LIFE: >50,000 Cycles
- INSULATION RESISTANCE: >1000 MILLI-OHMS
- OPERATING TEMP: -20°C to 55°C



CIRCUIT: 4PST
CONTACT CONFIGURATION



RECOMMENDED PANEL MOUNTING
SCALE 1:1

					E-SWITCH®				
					TITLE D16EET14CWHT				
A	13716	RELEASE FOR PRODUCTION	1/15/04	AR	SCALE	DATE	DR	DWG	REV
REV.	ECN No.	DESCRIPTION	DATE	CHKD	1.5:1	1/15/04	AR	XF0578P	A
<small>THE INFORMATION CONTAINED IN THIS DOCUMENT IS PROPRIETARY TO E-SWITCH AND IS NOT TO BE COPIED OR TRANSFERRED</small>									