

## Excellent Integrated System Limited

Stocking Distributor

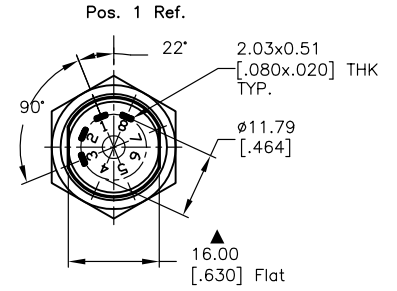
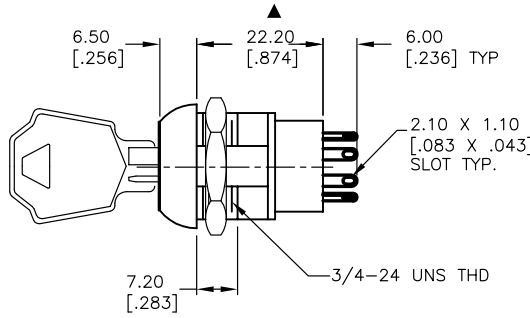
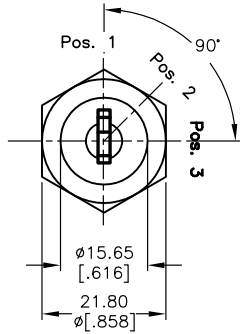
Click to view price, real time Inventory, Delivery & Lifecycle Information:

[E-Switch](#)  
[KO130E](#)

For any questions, you can email us directly:

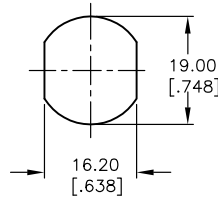
[sales@integrated-circuit.com](mailto:sales@integrated-circuit.com)

SHEET OF

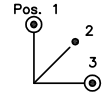


NOTES:

1. ALL DIMENSIONS IN MM [INCH]
2. GENERAL TOLERANCE:  $\bar{X}, \bar{X} = \pm 0.4$   
 $\bar{X}, \bar{X} X = \pm 0.25$
3. TERM. NOS. FOR REF. ONLY
4. CONTACT RATING: 4A @125VAC/28VDC, 2A @250VAC
5. DIELECTRIC STRENGTH: 1KV RMS min. at sea level
6. ELECTRICAL LIFE: 10,000 make-and-break cycles at full load.
7. MATERIALS:  
 CONTACTS: Silver Plated CU (Q Contact material)  
 TERMINALS: GOLD Plated Cu (Q Contact material)  
 MOUNTING NUT: Nickel Plated zinc alloy  
 CONTACT SPRING: Piano Wire  
 KEYS (2): Brass  
 LOCK: Bright NI plated zinc alloy with NI facing  
 TUMBLER Mechanism: 4-disc tumbler cylinder.
8. ▲ DENOTES CRITICAL PARAMETER.



RECOMMENDED PANEL LAYOUT



CIRCUIT: SP (45° INDEXING)  
CONTACT CONFIGURATION

SWITCH FUNCTION		
CONNECTED TERMINAL #		
POS. 1	POS. 2	POS. 3
8-1	1-2	2-3

LEGEND

- = Detent Positions (45° or 90°)
- ⊙ = Key pull possible in these positions

**E-SWITCH®**

TITLE		K0130E			
SCALE	DATE	DR	DWG	REV	
1:1	10/10/03	AR	K200214	A	

A	13517	RELEASED FOR PRODUCTION	10/10/03	AR
REV.	ECN No.	DESCRIPTION	DATE	CHKD

THE INFORMATION CONTAINED IN THIS DOCUMENT IS PROPRIETARY TO E-SWITCH AND IS NOT TO BE COPIED OR TRANSFERRED