

Excellent Integrated System Limited

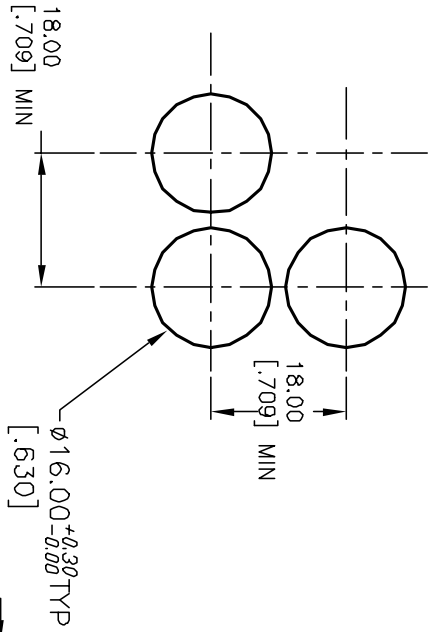
Stocking Distributor

Click to view price, real time Inventory, Delivery & Lifecycle Information:

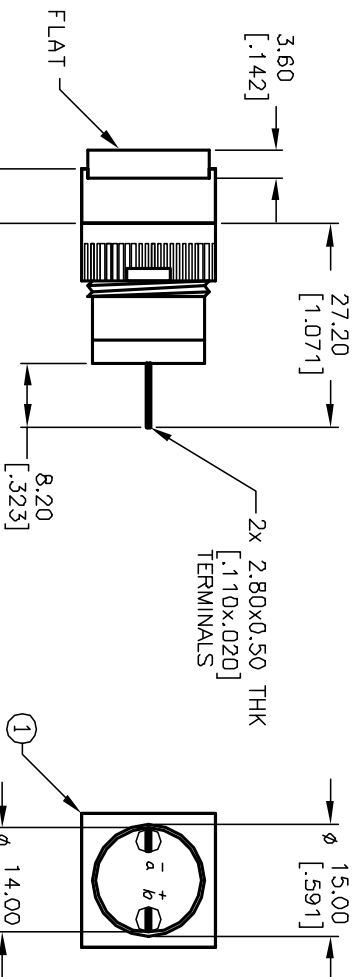
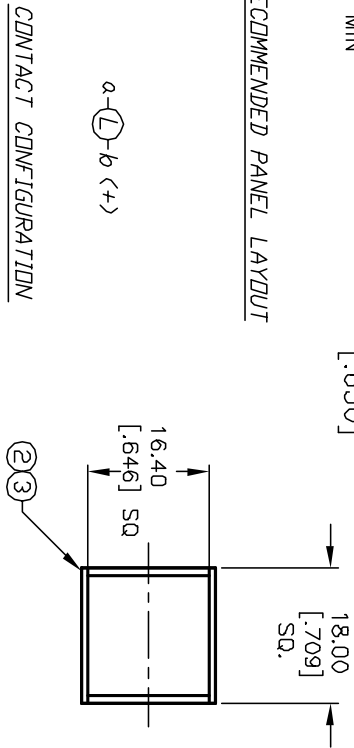
[E-Switch](#)
[L16PLS10KYELYEL](#)

For any questions, you can email us directly:

sales@integrated-circuit.com



RECOMMENDED PANEL LAYOUT



Item	Qty.	Dwg. No.	Part No.
1	1	F040002	L16 PLS10
2	1	F050424	50-004-24 YEL L.E.D.
3	1	F050316	50-003-16 YEL LENS TRANSPARENT

NOTES:

1. ALL DIMENSIONS IN MM [INCH]
2. GENERAL TOLERANCE: X.X=±0.4
X.XX=±0.25
3. TERM. NOS. FOR REFERENCE ONLY.
4. RATING: 5A @250V AC
8A @125V AC
5. LAMP VOLTAGE: 24V DC LED
6. MECHANICAL LIFETIME: >2 MILLION OPERATIONS
7. CONTACT MATERIAL: COPPER ALLOY W/SILVER PLATING

CONTACT CONFIGURATION

REV.	ECN No.	DESCRIPTION	DATE	CHKD
A	12439	RELEASED FOR PRODUCTION	9/20/02	CB

TITLE	SCALE	DATE	DR	DWG	REV
L16 PL S10 K YEL YEL	1:1	9/20/02	CB	XF0506P	A



THE INFORMATION CONTAINED IN THIS DOCUMENT IS PROPRIETARY TO E-SWITCH AND IS NOT TO BE COPIED OR TRANSMITTED