

## Excellent Integrated System Limited

Stocking Distributor

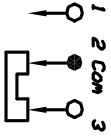
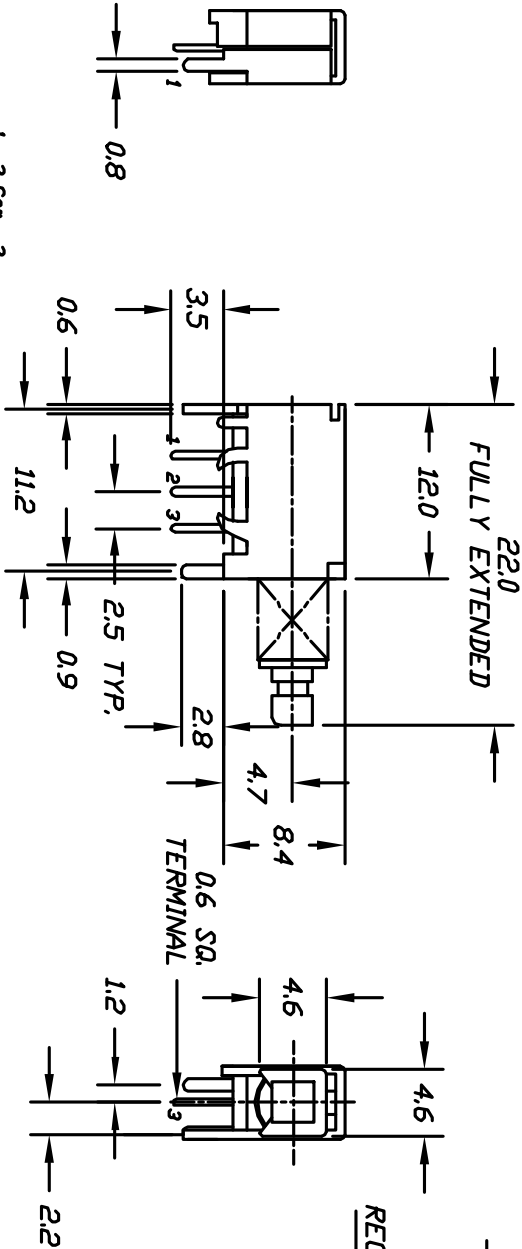
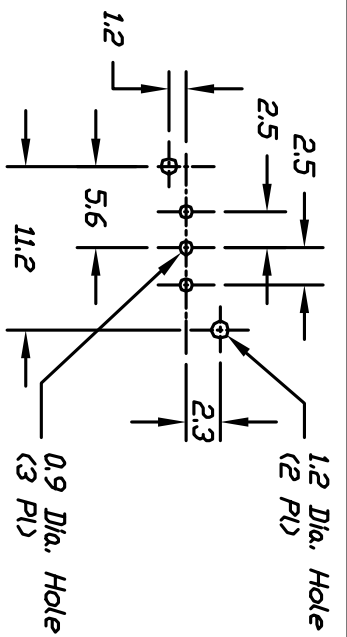
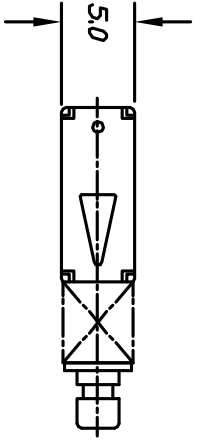
Click to view price, real time Inventory, Delivery & Lifecycle Information:

[E-Switch](#)  
[LC1258OASP](#)

For any questions, you can email us directly:

[sales@integrated-circuit.com](mailto:sales@integrated-circuit.com)

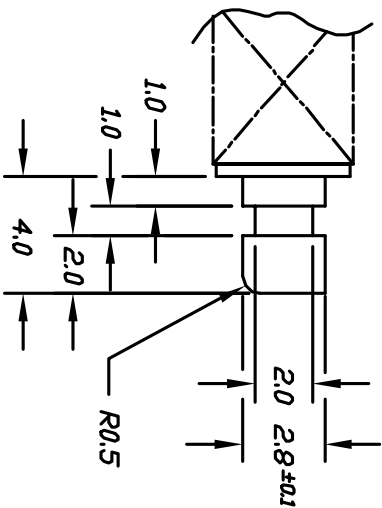
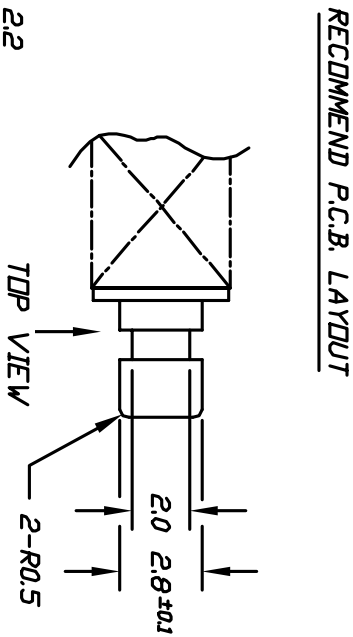
SHEET OF



**CIRCUIT: SPDT**  
**CONTACT CONFIGURATION**

**NOTES:**

1. ALL DIMENSIONS IN MM
2. GENERAL TOLERANCE: X.X=±0.4  
X.XX=±0.25
3. TERM. NOS. FOR REF. ONLY
4. RATING: DC 30V, 0.3A
5. CONTACT MATERIAL:  
PHOSPHOR BRONZE W/ SILVER PLATING
6. CONTACT RESISTANCE: 20 milli-Ohms max.
7. DIELECTRIC STRENGTH: 1,000V rms @ Sea Level
8. OPERATING FORCE: 230gf-100gf
9. TRAVEL : FULL 3.5mm



(ACTUATOR DETAIL) SCALE 4:1

REV.	ECN No.	DESCRIPTION	DATE	CHKD
A	I2310	RELEASED FOR PRODUCTION	7/19/02	CB

TITLE		SCALE		DATE	DR	DWG	REV
LC 1258DA SP (Momentary)		2:1		1/18/00	MM	P070227	A

**E-SWITCH®**

THE INFORMATION CONTAINED IN THIS DOCUMENT IS PROPRIETARY TO E-SWITCH AND IS NOT TO BE COPIED OR TRANSMITTED