

Excellent Integrated System Limited

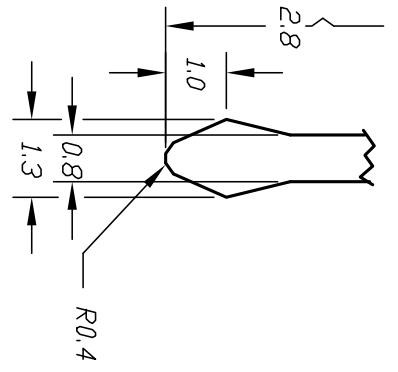
Stocking Distributor

Click to view price, real time Inventory, Delivery & Lifecycle Information:

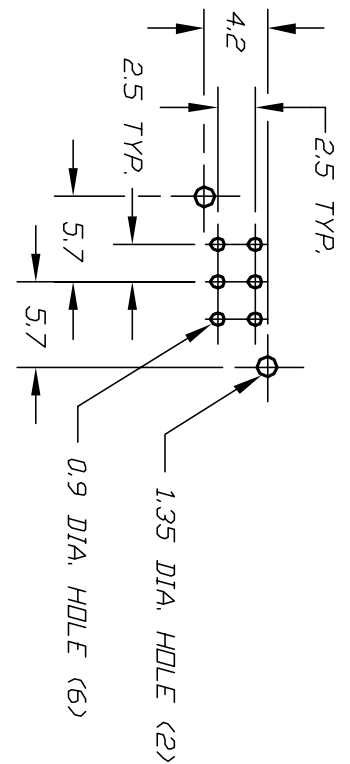
[E-Switch](#)
[LC2259OASP](#)

For any questions, you can email us directly:

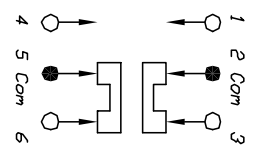
sales@integrated-circuit.com



<DETAIL -A->
SCALE 6:1

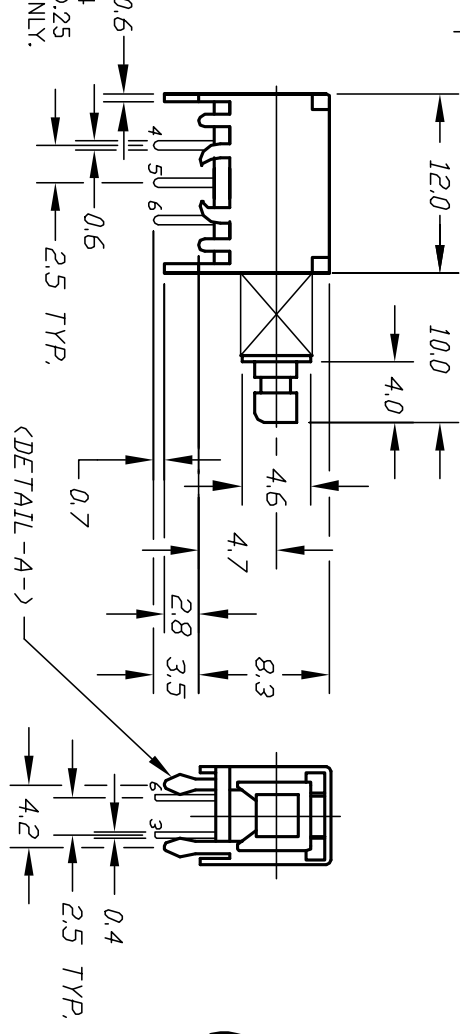
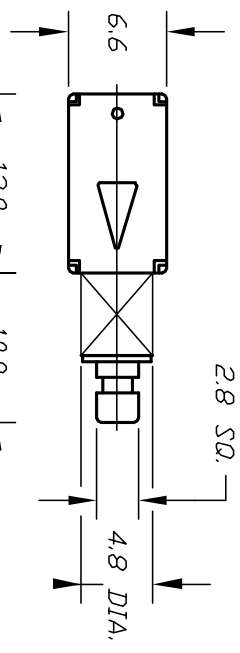


RECOMMEND P.C.B. HOLES

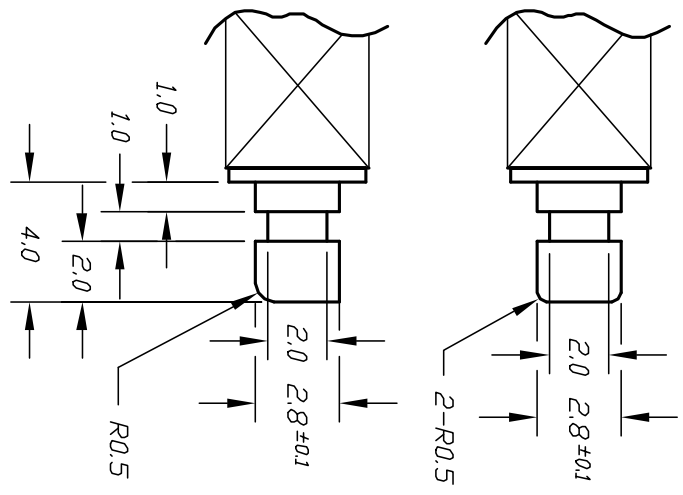


CIRCUIT: DPDT

CONTACT CONFIGURATION
TIMING: SHORTING



<DETAIL -A->



<ACTUATOR DETAIL> SCALE 4:1

- NOTES:
1. ALL DIMENSIONS IN MM
 2. GENERAL TOLERANCE: X.X=±0.4
X.XX=±0.25
 3. TERM. NOS. FOR REFERENCE ONLY.
 4. OPERATING FORCE: 330±100gf
 5. TRAVEL: FULL 3.5mm
 6. CONTACT RATING: 300mA @30VDC
 7. ELECTRICAL LIFE: 10,000 CYCLES
 8. CONTACT RESISTANCE:
30mOhms MAX. INITIAL @2-4VDC, 100mA
 9. DIELECTRIC STRENGTH: 1000V RMS

REV.	ECN No.	DESCRIPTION	DATE	CHKD
B	13025	ADD NOTES 6, 7, 8, 9	4/9/03	AR
A		RELEASED FOR PRODUCTION	11/7/96	MM

TITLE		SCALE	DATE	DR	DWG	REV
LC2259OASP		2:1	11/7/96	MM	P070236	B

E-SWITCH®

THE INFORMATION CONTAINED IN THIS DOCUMENT IS PROPRIETARY TO E-SWITCH AND IS NOT TO BE COPIED OR TRANSMITTED