

Excellent Integrated System Limited

Stocking Distributor

Click to view price, real time Inventory, Delivery & Lifecycle Information:

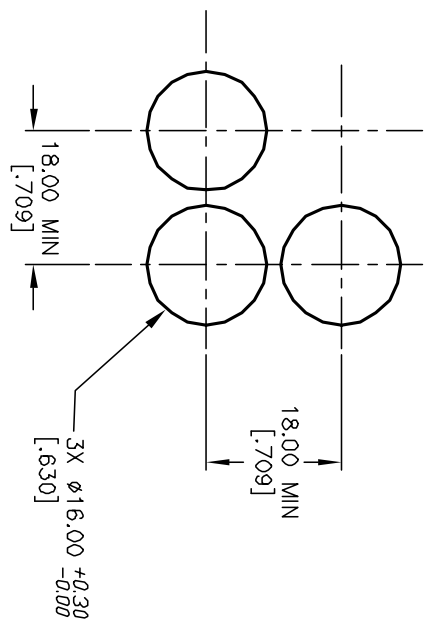
[E-Switch](#)
[P16OAS110RED](#)

For any questions, you can email us directly:

sales@integrated-circuit.com

SHEET OF

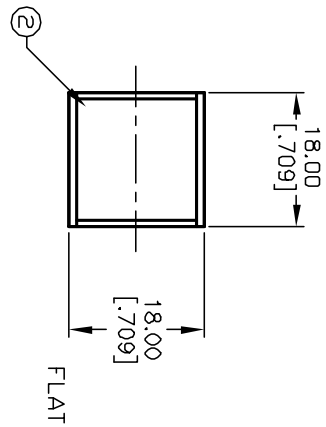
PARTS LIST			
ITEM	QTY.	PART NO.	PART DESCRIPTION
1	1	F040010	P16 OA S11
2	1	F052314	50-003-14 (RED LENS)



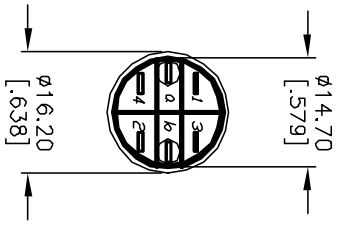
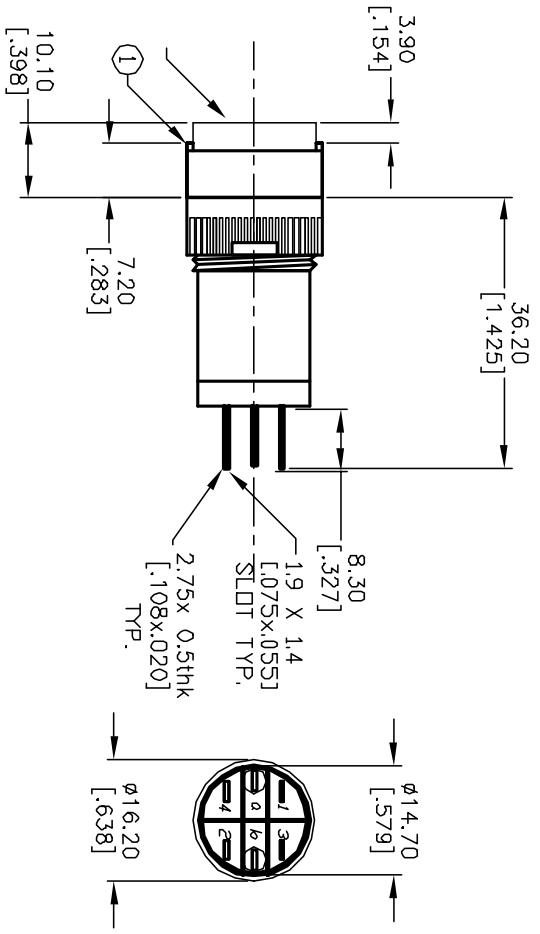
RECOMMENDED
PANEL MOUNTING

1.0 ± 0.2
 3.0 ± 0.4
 a-L-b (+)

SPST
 CONTACT CONFIGURATION



FLAT



NOTES:

1. ALL DIMENSIONS IN MM [INCH]
2. GENERAL TOLERANCE: X.XX=±0.4
X.XX=±0.25
3. TERM. NOS. FOR REFERENCE ONLY.
4. RATING: 5A@250V AC / 8A@125V AC
5. MECHANICAL LIFETIME: >2 MILLION OPERATIONS
6. TRAVEL: 3.0MM
7. CONTACT MATERIAL: COPPER ALLOY W/SILVER PLATING

A	12440	RELEASED FOR PRODUCTION	9/20/02	CB
REV.	ECN NO.	DESCRIPTION	DATE	CHKD

TITLE		P16 OA S11 0 RED		
SCALE	DATE	DR	DWG	REV
1.5:1	9/20/02	CB	XF0510P	A

E-SWITCH®

THE INFORMATION CONTAINED IN THIS DOCUMENT IS PROPRIETARY TO E-SWITCH AND IS NOT TO BE COPIED OR TRANSMITTED