

## Excellent Integrated System Limited

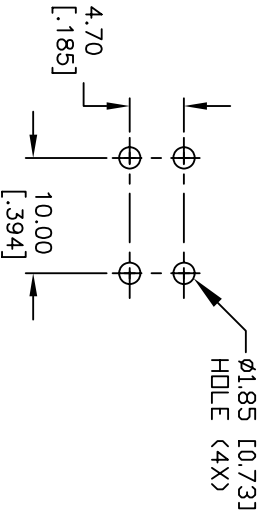
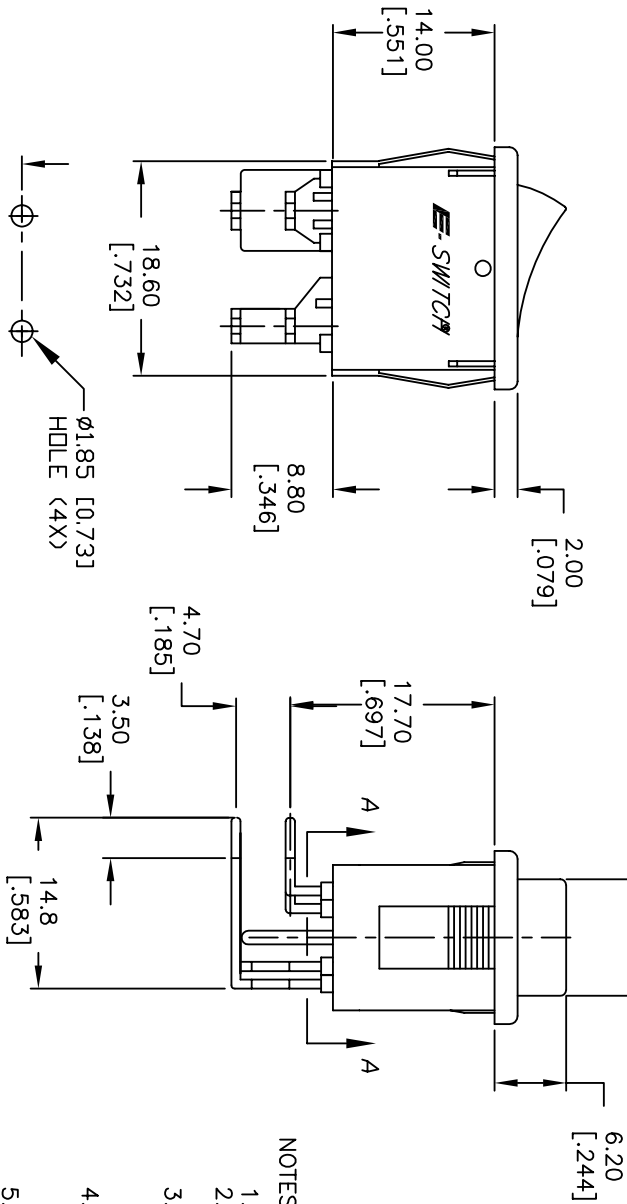
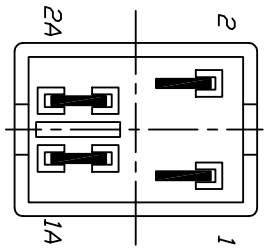
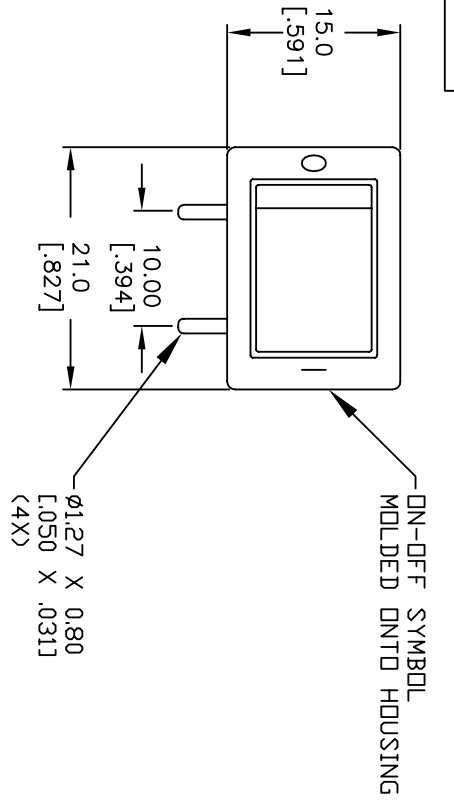
Stocking Distributor

Click to view price, real time Inventory, Delivery & Lifecycle Information:

[E-Switch](#)  
[R1973BBLKBLKER0](#)

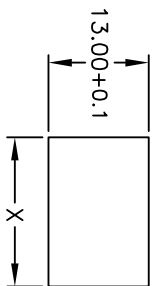
For any questions, you can email us directly:

[sales@integrated-circuit.com](mailto:sales@integrated-circuit.com)

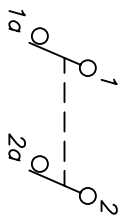


RECOMMENDED P.C.B. HOLES

PANEL THICKNESS	X dimension
0.75-1.25 [0.030-0.049]	19.2-0.1 [0.756]
1.25-2.0 [0.049-0.079]	19.4-0.1 [0.764]
2.0-3.0 [0.079-0.118]	19.8-0.1 [0.780]



PANEL CUTOUT  
 NOT TO SCALE



CIRCUIT: DPST

NOTES:

1. ALL DIMENSIONS IN MM [INCH]
2. GENERAL TOLERANCE: X.X=±0.4  
X.XX=±0.25
3. RATING:  
6A @250VAC; 9A @125VAC (UL, CSA, VDE)
4. MATERIAL:  
4(1)A @250VAC  
CONTACT SURFACE: Coin Silver, Silver Plate  
TERMINAL: Copper Alloy W/ Silver Plate.
5. CONTACT RESISTANCE: 20mΩ @10HMS TYP. INITIAL
6. INSULATION RESISTANCE: 1000MΩ @0HMS
7. DIELECTRIC STRENGTH:  
> 1500V RMS min. @SEA LEVEL  
> 3000V RMS @SEA LEVEL
8. MECHANICAL LIFE: 50,000 CYCLES.
9. ELECTRICAL LIFE: 10,000 CYCLES.

**E-SWITCH®**

R1973B BLK BLK ERD

REV.	ECN No.	DESCRIPTION	DATE	CHKD
B	11330	REVISED AND REDRAWN	10/3/01	CJB

TITLE	SCALE	DATE	DR	DWG	REV
R1973B BLK BLK ERD	1.5:1	10/03/01	CB	M400015	B

THE INFORMATION CONTAINED IN THIS DOCUMENT IS PROPRIETARY TO E-SWITCH AND IS NOT TO BE COPIED OR TRANSFERRED