

Excellent Integrated System Limited

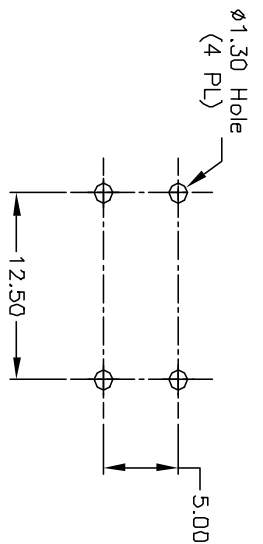
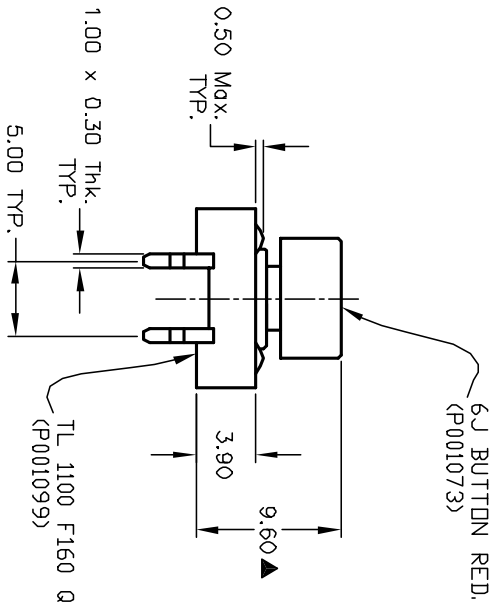
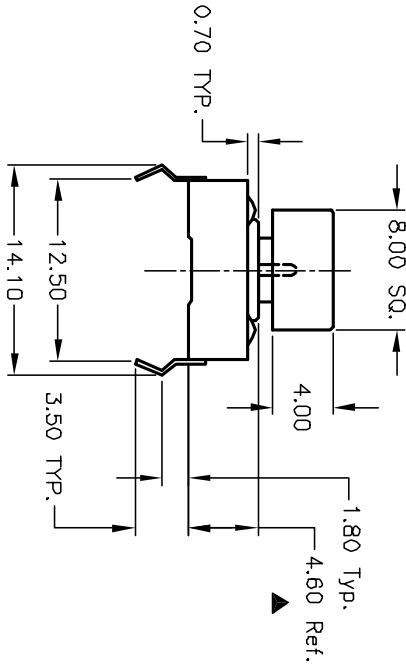
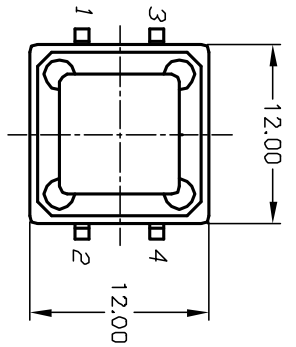
Stocking Distributor

Click to view price, real time Inventory, Delivery & Lifecycle Information:

[E-Switch](#)
[TL1100F160Q6JRED](#)

For any questions, you can email us directly:

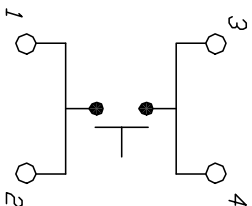
sales@integrated-circuit.com



RECOMMENDED P.C.B. LAYOUT

NOTES:

1. ALL DIMENSIONS IN MM
2. GENERAL TOLERANCE: X.X=±0.4
X.XX=±0.25
3. TERM. NOS. FOR REF. ONLY
4. RATING: 50mA, @12V DC
5. TRAVEL: 0.30±0.15mm
6. OPERATING FORCE: 160±50gf
7. CONTACT RESISTANCE: 100 milliohms Max.
8. ELECTRICAL LIFE: 100,000 CYCLES MIN.
9. DESIGNATE MAJOR DIMENSIONS



CIRCUIT: SPST

CONTACT CONFIGURATION

REV.	ECN No.	DESCRIPTION	DATE	CHKD
A	11060	RELEASED FOR PRODUCTION	11/15/00	CJB
THE INFORMATION CONTAINED IN THIS DOCUMENT IS PROPRIETARY TO E-SWITCH AND IS NOT TO BE COPIED OR TRANSMITTED				

TITLE		TL 1100 F160 Q /6J RED		
SCALE	DATE	DR	DWG	REV
2:1	11/15/00	CJB	XP0140P	A

E-SWITCH®