

Excellent Integrated System Limited

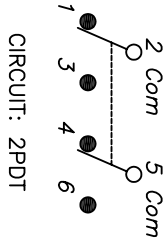
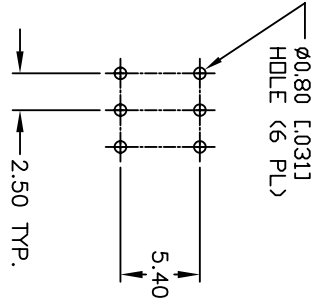
Stocking Distributor

Click to view price, real time Inventory, Delivery & Lifecycle Information:

[E-Switch](#)
[TL2201OAZB1CRED](#)

For any questions, you can email us directly:

sales@integrated-circuit.com

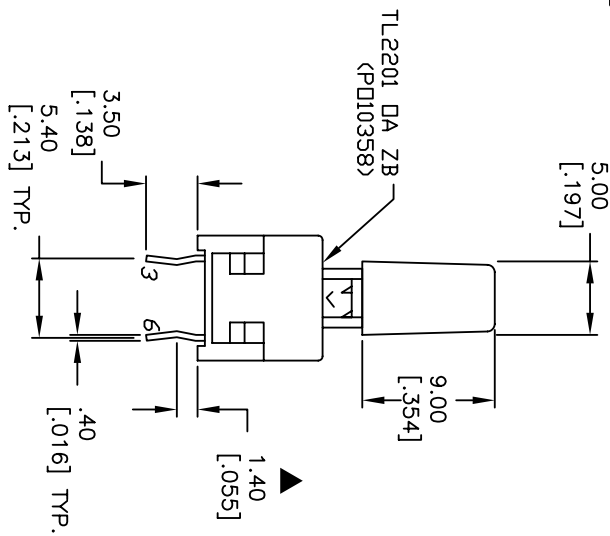
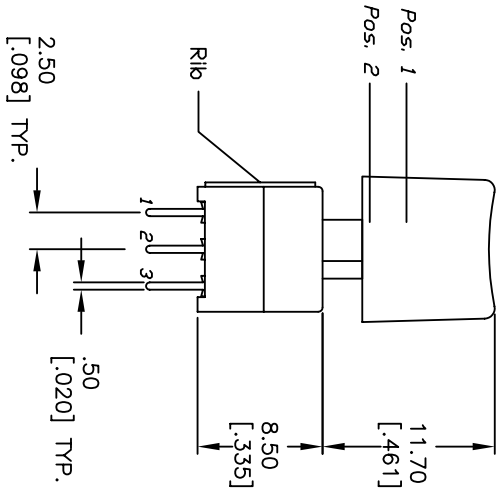
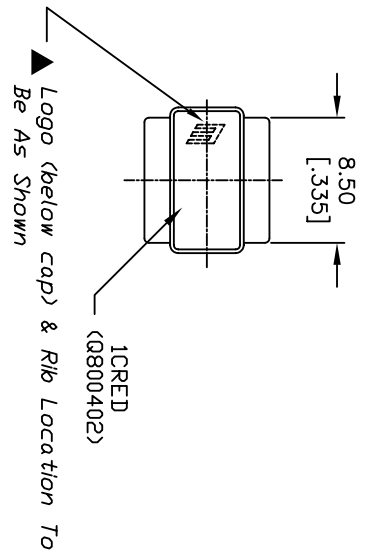


SWITCH FUNCTION	
POS 1	POS 2
2-1,5-4	2-3,5-6

() = Momentary

NOTES:

1. ALL DIMENSIONS IN MM [INCH]
2. GENERAL TOLERANCE: X.X=±0.4 X.XX=±0.25
3. TERM. NOS. FOR REF. ONLY
4. RATING: 0.1A @30V DC
5. TRAVEL: TRAVEL=2.50±0.38 LOCK=1.34±0.38
6. OPERATING FORCE:180±50gf
7. CONTACT RESISTANCE: 50mILLI-Ohms MAX. Initially
8. ELECTRICAL LIFE (at Full Load): 10,000 Cycles Make & Break
9. DESIGNATE MAJOR FEATURE:
10. 2002/95/EC (ROHS) COMPLIANT



REV.	ECN No.	DESCRIPTION	DATE	CHKD	TN
B	16997	AB00402 TD Q800402	2/14/07	AR	
A	13843	RELEASED FOR PRODUCTION	3/17/04	AR	

TITLE		SCALE	DATE	DR	DWG	REV
TL2201OAZB1CRED		2:1	2/14/2007	TN	XP0265A	B

E-SWITCH

THE INFORMATION CONTAINED IN THIS DOCUMENT IS PROPRIETARY TO E-SWITCH AND IS NOT TO BE COPIED OR TRANSMITTED