

Excellent Integrated System Limited

Stocking Distributor

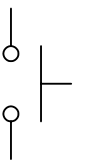
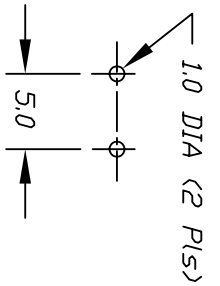
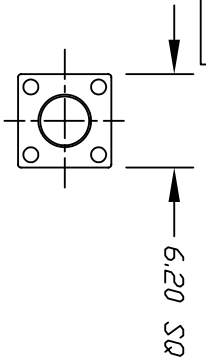
Click to view price, real time Inventory, Delivery & Lifecycle Information:

[E-Switch](#)
[TL59EF160Q](#)

For any questions, you can email us directly:

sales@integrated-circuit.com

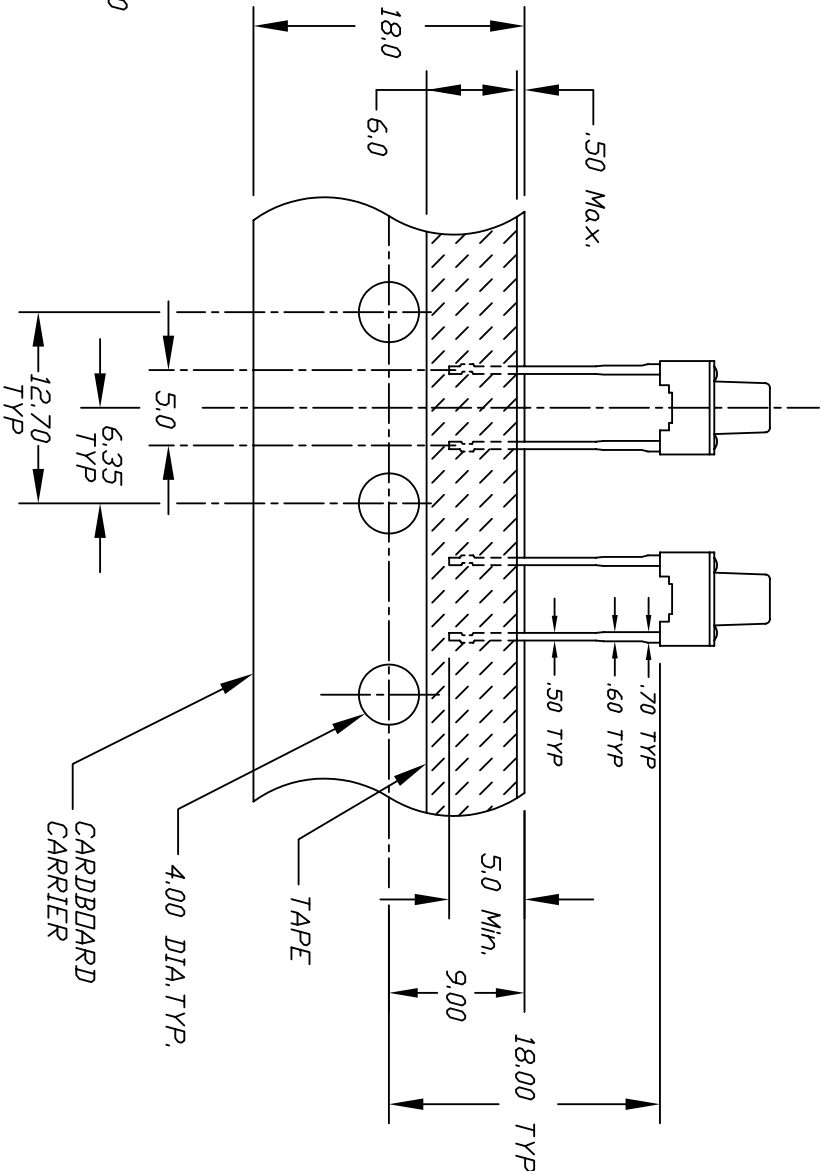
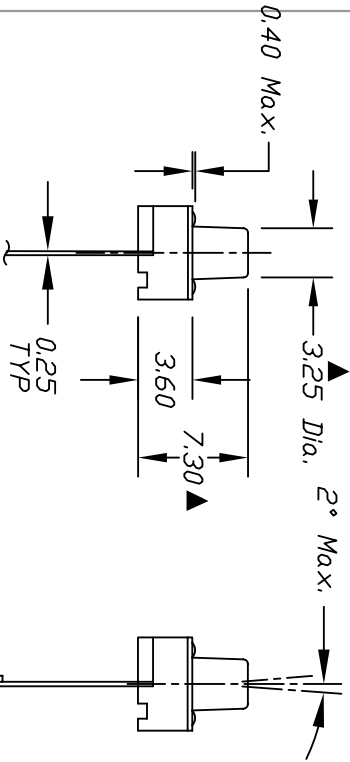
SHEET OF



CIRCUIT: SPST

RECOMMEND P.C.B. LAYOUT

CONTACT CONFIGURATION



NOTES:

1. ALL DIMENSIONS IN MM [INCH]
2. GENERAL TOLERANCE: X.X=±0.4
X.XX=±0.25
3. CONTACT RATING: 50mA @12V DC
4. CONTACT MATERIAL: SILVER
5. OPERATING FORCE: 160±50gf
6. TRAVEL: 0.25 +0.2/-0.1
7. CONTACT RESISTANCE: 100mILLI Ohms max
8. ELECTRICAL LIFE: 100,000 CYCLES
9. PACKAGING:
CARRIER IS FOLDED EVERY 25 PITCHES
(24) SWITCHES PER FOLD)
10. 2002/95/EC (ROHS) COMPLIANT
(1,000) SWITCHES PER BOX
11. ▲ DENOTES MAJOR DIMENSION.

REV.	ECN No.	DESCRIPTION	DATE	CHKD
B	16898	UPDATED NOTES, .30 TD .25 DIM	1/19/07	TN
A	10160	RELEASED FOR PRODUCTION		

TITLE	SCALE	DATE	DR	DWG	REV
TL59EF160Q	2:1	1/19/2007	TN	P010582	B

E-SWITCH®

THE INFORMATION CONTAINED IN THIS DOCUMENT IS PROPRIETARY TO E-SWITCH AND IS NOT TO BE COPIED OR TRANSFERRED