



Distributor of Molex Connector Corporation: Excellent Integrated System Limited
Datasheet of 35725-4910 - Connector Quick Connect Receptacle/Tab 14-18 AWG 0.250"
(6.35mm) Crimp

Contact us: sales@integrated-circuit.com Website: www.integrated-circuit.com

Excellent Integrated System Limited

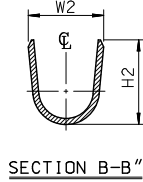
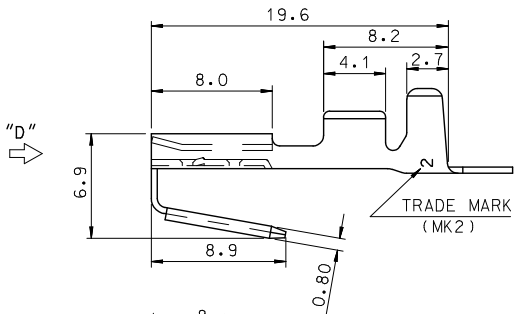
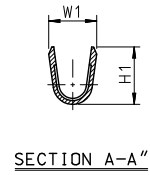
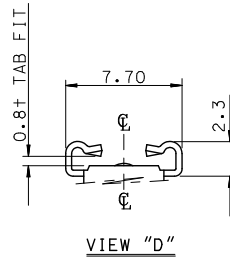
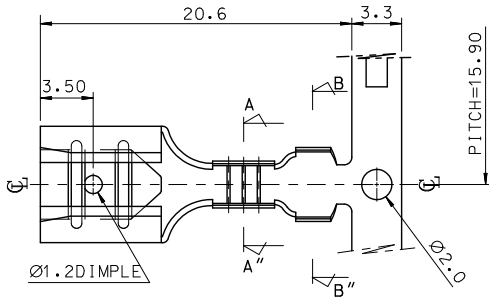
Stocking Distributor

Click to view price, real time Inventory, Delivery & Lifecycle Information:

[Molex Connector Corporation](#)
[35725-4910](#)

For any questions, you can email us directly:
sales@integrated-circuit.com

Contact us: sales@integrated-circuit.com Website: www.integrated-circuit.com

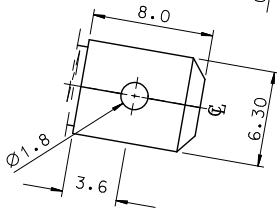


NOTES

1. MATERIAL : BRASS 0.40 ± 0.03 THK'
2. FINISH : POST-TIN PLATING
3. RECOMMENDED LENGTH OF WIRE STRIP IS 5.3-5.8

MATERIAL NO.	PART NO.	W1	H1	W2	H2	WIRE	INSUL.DIA.
357253910	35725-3910			4.9	5.6	AWG# 18-#16	MAX.Ø 3.12
357254910	35725-4910	3.1	3.8			AWG# 14	MAX.Ø 3.50
357255910	35725-5910	4.0	4.2	6.5	6.35	AWG# 12	MAX.Ø 3.98

WIRE : UL1015



REVISED EC NO: KOF2012-0110 DRWN:HYOU CHKD:SH.CHU APPR:YSK.MOZ 2012/04/23 2012/04/25	QUALITY SYMBOLS	GENERAL TOLERANCES (UNLESS SPECIFIED)	DIMENSION STYLE	SCALE	DESIGN UNITS	THIRD ANGLE PROJECTION
	▽=0 ▽=0	mm INCH 4 PLACES ± --- ± --- 3 PLACES ± --- ± --- 2 PLACES ± 0.30 ± --- 1 PLACE ± 0.20 ± --- 0 PLACE ± ±	MM ONLY	4:1	METRIC	
B1	DESCRIPTION	ANGULAR ± 1 ° DRAFT WHERE APPLICABLE MUST REMAIN WITHIN DIMENSIONS	DRAWN BY DATE W. Y. YANG 1993/06/26 CHECKED BY DATE B. K. CHOI 1993/06/26 APPROVED BY DATE C. W. LEE 1993/06/26	TITLE	.250 PIGGY BACK	
			MATERIAL NO.	DOCUMENT NO.	molex SD-35725-*910	
			SIZE	THIS DRAWING CONTAINS INFORMATION THAT IS PROPRIETARY TO MOLEX INCORPORATED AND SHOULD NOT BE USED WITHOUT WRITTEN PERMISSION		