

Excellent Integrated System Limited

Stocking Distributor

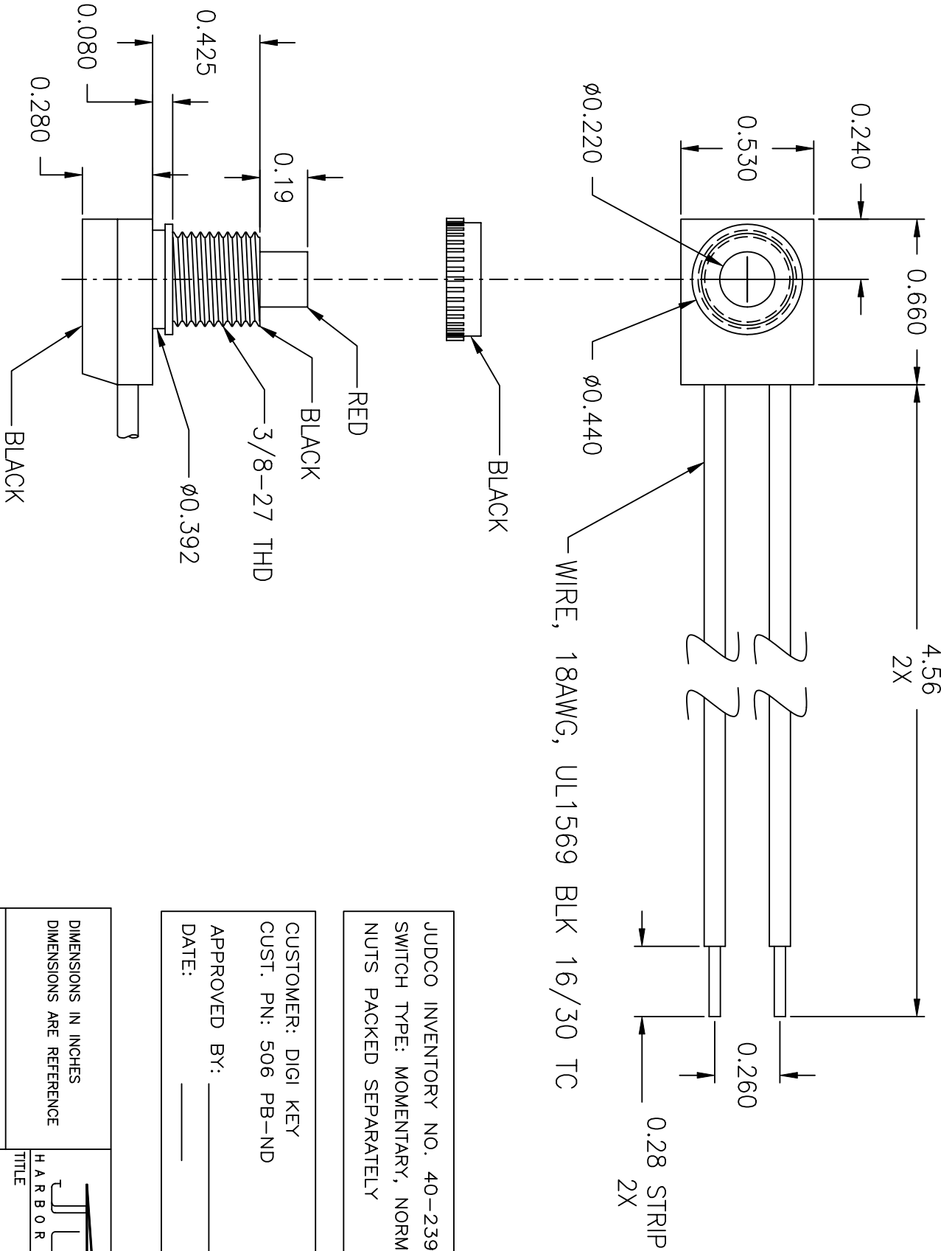
Click to view price, real time Inventory, Delivery & Lifecycle Information:

[Judco Manufacturing, Inc.](#)
[40-2390-00](#)

For any questions, you can email us directly:

sales@integrated-circuit.com

This document embodies a product, component, and/or design proprietary to JUDCO MANUFACTURING INC., and which is protected either as a trade secret, by U.S. Patent, or by copyright. It may not be used in any way without written express consent of JUDCO MANUFACTURING INC.

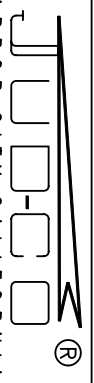


LTR	EN	DESCRIPTION	APPR	BY	DATE
A	-	INITIAL RELEASE	RB	EM	2-09-04

JUDCO INVENTORY NO. 40-2390-00
 SWITCH TYPE: MOMENTARY, NORMALLY OPEN
 NUTS PACKED SEPARATELY

CUSTOMER: DIGI KEY
 CUST. PN: 506 PB-ND
 APPROVED BY: _____
 DATE: _____

DIMENSIONS IN INCHES
 DIMENSIONS ARE REFERENCE



HARBOR CITY CALIFORNIA

DRAWN: EM 02-09-04
 APPR: KU 02-09-04
 TITLE: OUTLINE
 J-188A-2
 DWG. NO. 1415-564

1415US64A.DWG
 SHEET 1 OF 1