

Excellent Integrated System Limited

Stocking Distributor

Click to view price, real time Inventory, Delivery & Lifecycle Information:

[EPCOS \(TDK\)](#)
[B39242B7766C911](#)

For any questions, you can email us directly:

sales@integrated-circuit.com



SAW Components

Data Sheet B7766





SAW Components	B7766
Low-Loss Filter	2441,75 MHz

Data Sheet



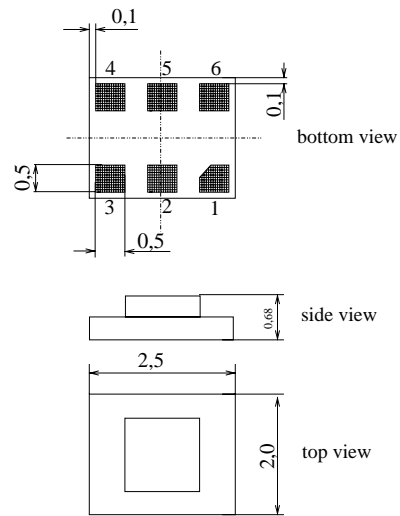
Features

- Low-loss RF filter for bluetooth
- Usable passband 83,5 MHz
- Unbalanced to balanced operation
- Impedance transformation
- Package for **Surface Mounted Technology (SMT)**

Terminals

- Ni, gold-plated

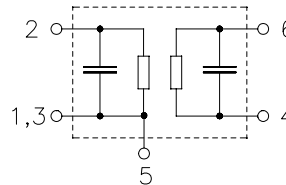
Chip Sized Saw Package DCS6K



Dimensions in mm, approx. weight 0,010g

Pin configuration

- | | |
|------|-------------------|
| 2 | Input, unbalanced |
| 1, 3 | Input ground |
| 4, 6 | Output, balanced |
| 5 | To be grounded |



Type	Ordering code	Marking and Package according to	Packing according to
B7766	B39242-B7766-C911	C61157-A7-A123	F61074-V8153-Z000

Electrostatic Sensitive Device (ESD)

Maximum ratings

Parameter	Symbol	Value	Unit	Notes
Operable temperature range	T	- 40 /+ 85	°C	
Storage temperature range	T_{stg}	- 40 /+ 85	°C	
DC voltage	V_{DC}	3,5	V	
ESD voltage	V_{ESD}	50*	V	Machine Model, 10 pulses
Input power max.	P_{IN}	8	dBm	source/load impedance 50Ω / 120Ω c.w.
2400...2483,5 MHz		25		
824...849, 880...915 MHz		23		
1710..1785, 1850..1910 MHz				

* - acc. to JESD22-A115A (Machine Model), 10 negative & 10 positive pulses



SAW Components	B7766
Low-Loss Filter	2441,75 MHz

Data Sheet



Characteristics (matching for a chipset impedance of 120 Ω || 0,6pF)

Operating temperature range: $T = -40$ to $+85$ °C
 Terminating source impedance: $Z_S = 50\Omega || 8,2nH$
 Terminating load impedance: $Z_L = (120\Omega || 0,6pF) || 3,9nH$ *)

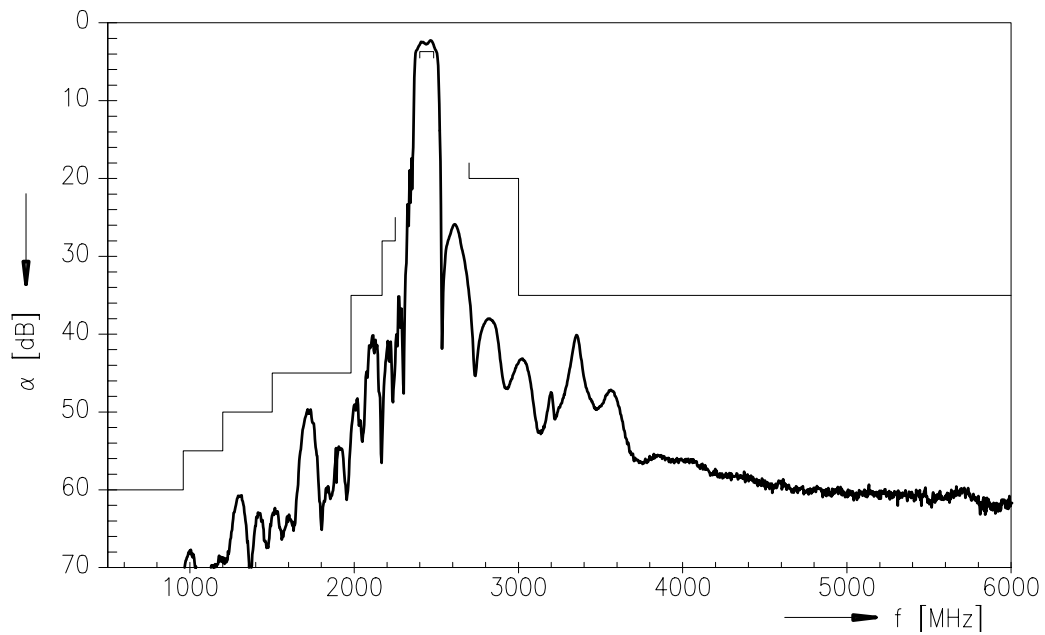
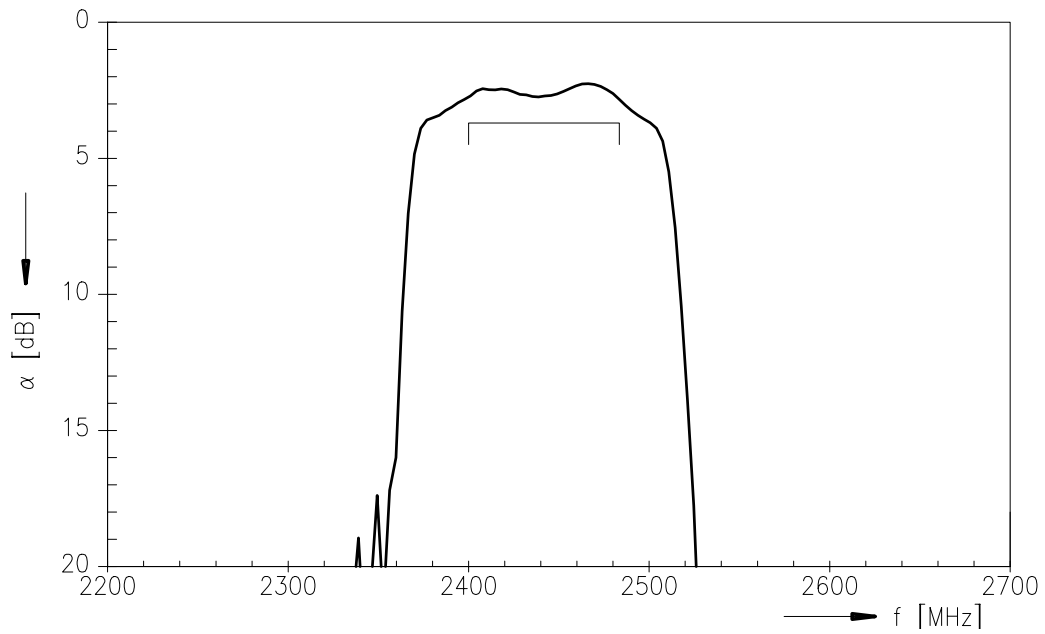
		min.	typ.	max.	
Center frequency	f_c	—	2441,75	—	MHz
Maximum insertion attenuation	α_{max}	—	3,0	3,7	dB
2400,0 ... 2483,5 MHz					
Return loss		—	9,0	—	dB
2400,0 ... 2483,5 MHz					
Amplitude ripple (p-p)	$\Delta\alpha$	—	1,0	2,0	dB
2400,0 ... 2483,5 MHz					
Attenuation	α				dB
500,0 ... 960,0 MHz		60	70	—	
960,0 ... 1200,0 MHz		55	68	—	
1200,0 ... 1501,0 MHz		50	61	—	
1501,0 ... 1980,0 MHz		45	50	—	
1980,0 ... 2170,0 MHz		35	39	—	
2170,0 ... 2250,0 MHz		28	40	—	
2700,0 ... 3000,0 MHz		20	34	—	
3000,0 ... 4000,0 MHz		35	40	—	
4000,0 ... 6000,0 MHz		35	56	—	

*) equals 120Ω || 8,2nH



SAW Components	B7766
Low-Loss Filter	2441,75 MHz
Data Sheet	SMD

Transfer function





SAW Components	B7766
Low-Loss Filter	2441,75 MHz
Data Sheet	SMD

Published by EPCOS AG

SAW MC WT, P.O. Box 80 17 09, 81617 Munich, GERMANY

TEL +49 89 636 09, FAX +49 89 636 2 26 89

© EPCOS AG 2004. Reproduction, publication and dissemination of this brochure and the information contained therein without EPCOS' prior express consent is prohibited.

Purchase orders are subject to the General Conditions for the Supply of Products and Services of the Electrical and Electronics Industry recommended by the ZVEI (German Electrical and Electronic Manufacturers' Association), unless otherwise agreed.

This brochure replaces the previous edition.

For questions on technology, prices and delivery please contact the Sales Offices of EPCOS AG or the international Representatives.

Due to technical requirements components may contain dangerous substances. For information on the type in question please also contact one of our Sales Offices.