



**Distributor of FCI: Excellent Integrated System Limited**

Datasheet of 10070158-00219XLF - D-Sub Connector Plug, Male Pins 4 (2 + 2 Power) x 2  
Position Through Hole, Right Angle Solder Paste

Contact us: [sales@integrated-circuit.com](mailto:sales@integrated-circuit.com) Website: [www.integrated-circuit.com](http://www.integrated-circuit.com)

---

## Excellent Integrated System Limited

Stocking Distributor

Click to view price, real time Inventory, Delivery & Lifecycle Information:

[FCI](#)

[10070158-00219XLF](#)

For any questions, you can email us directly:

[sales@integrated-circuit.com](mailto:sales@integrated-circuit.com)

Contact us: sales@integrated-circuit.com Website: www.integrated-circuit.com

**TECHNICAL SPECIFICATIONS**

1: MATERIAL:  
 INSULATOR : High Temperature Thermoplastics  
 CONTACTS : Copper alloy  
 SHELLS : Steel with Nickel Plated

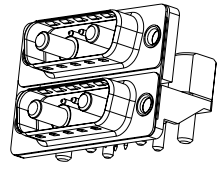
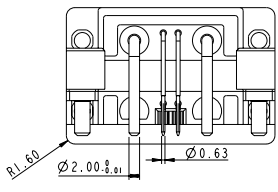
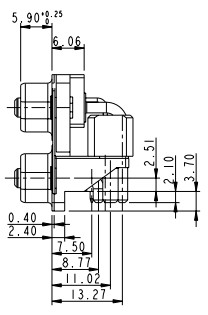
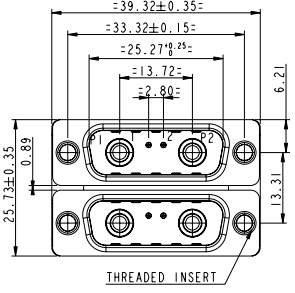
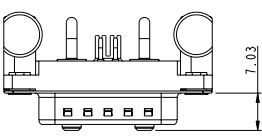
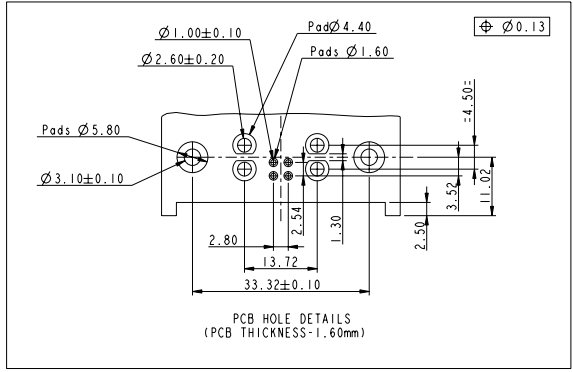
2: PLATING:  
 CONTACT ACTIVE ZONE : GOLD or Equivalent  
 TERMINATION ZONE : TIN over Cu  
 METAL BRACKET : BRASS- Nickel  
 LIF HARPOON : BRASS- TIN  
 CLINCH NUT : BRASS- Nickel

3: ELECTRICAL DATA:  
 Current Rating : 48V/24A for Power contact  
 : 0.375 A for signal contact  
 Test Voltage : 1000V  
 Contact Resistance : For Power contacts  $\leq 10m\Omega$   
 : For Signal contacts  $\leq 25m\Omega$   
 Insulation Resistance : 5000M Ohm  
 Electrical continuity between shell and harpoon

4: ENVIRONMENTAL CHARACTERISTICS- ROHS Compatible

Operating temperature : 70°C+30°C Temperature rise

5.MECHANICAL LIFE : 200 matings



"This Product Meets European union directives & other country regulations as described in GS-22-008"

The Housing will withstand exposure to 265° peak temperature for 30 sec in a convection, infra-red or vapour reflow oven solder applications

Packing as per GS 14-1104

PART NO. 10070158-00219XLF

1-440UNC Threaded Insert  
 L-M3 Threaded Insert

www.fciconnect.com		surface	tolerance std	projection	mm
		ISO 1302	ISO 406 ISO 1101		
		TOLERANCES UNLESS OTHERWISE SPECIFIED			
Dr	NIRMAL G	2006-10-20	ANGULAR	0.X	$\pm 0.30$
Eng	NIRMAL G	2007-11-29	LINEAR	0.XX	$\pm 0.10$
Chk	ANISH S	2008-02-08		0.XXX	$\pm 0.050$
Appr	BIJU K PAUL	2008-02-08	Product family	-D-SUB	Spec ref
Rev	cls no	dr	date	size	Scale
A	107-0051	NG	2007-07-17	A2	2:1
B	107-0183	NG	2007-11-30	ECN	107-0163
C	100-0019	NG	2008-02-08		
FCI		DUAL PCB CONNECTOR-48V		10070158-002	Rev. C
MicroTCA.MALE PIP - version		CUSTOMER		Sheet 1 of 1	

Copyright FCI