

Excellent Integrated System Limited

Stocking Distributor

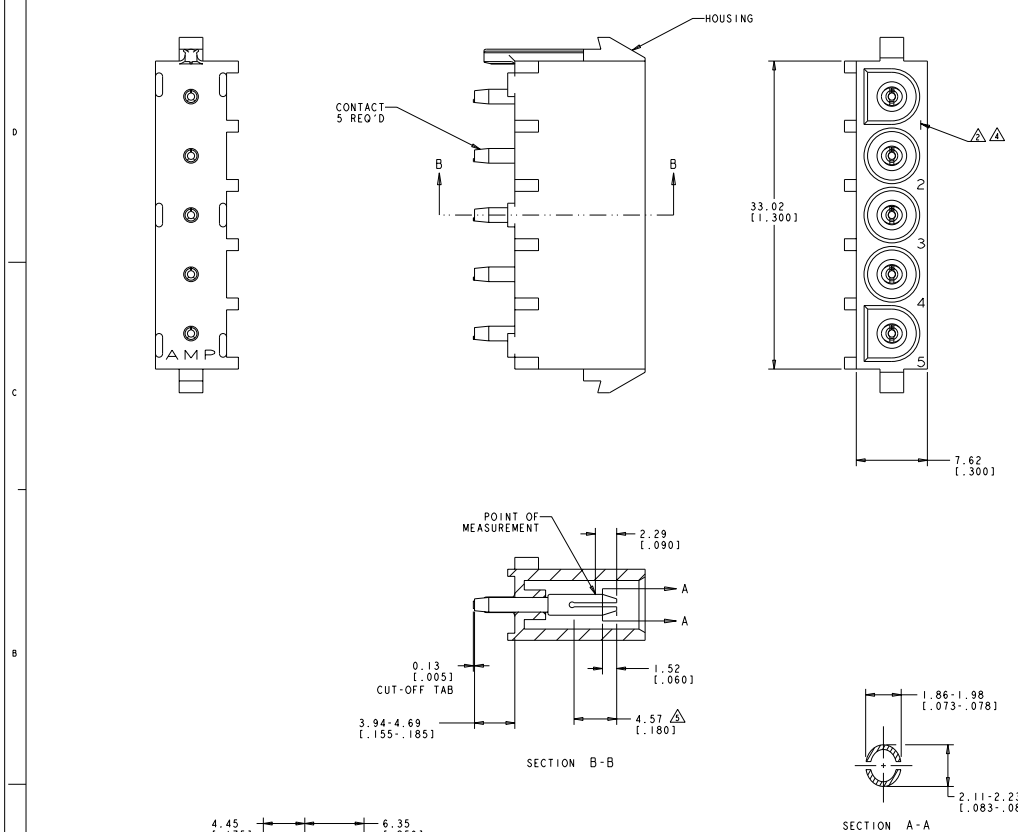
Click to view price, real time Inventory, Delivery & Lifecycle Information:

[TE Connectivity AMP Connectors](#)
[1586172-1](#)

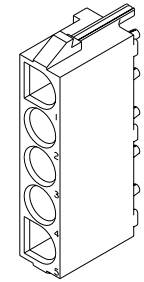
For any questions, you can email us directly:

sales@integrated-circuit.com

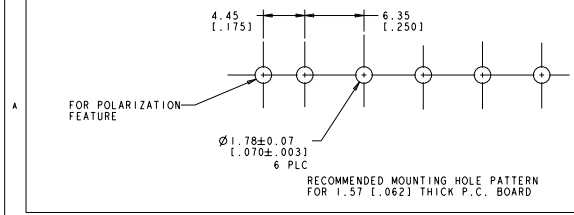
REV	CM	DATE	DESCRIPTION	BY	CHK	APP
0	00		REVISED PER ECO-0087-04			
01			REVISED PER ECO-00193			



- PARTS COMPLY TO AMP SOLDERABILITY SPECIFICATION 109-11-3.
- CIRCUIT IDENTIFICATION CHARACTERS ARE ADJACENT TO THE INDICATED CAVITIES, BUT LOCATION AND ORIENTATION MAY DIFFER FROM PRINT.
- DIMENSIONS IN BRACKETS ARE IN INCHES.
- IDENTIFICATION WILL APPEAR AT CIRCUIT NO. 1, OTHERS OPTIONAL.
- CONTACT IS PLATED OVERALL WITH 0.00127 [.00050] NICKEL, THEN 0.000075 [.000030] GOLD OVER CONTACT LENGTH INDICATED AND MATTE TIN ON SOLDER TAIL END.



SCALE 4:1



PHOSPOR BRONZE, GOLD	NYLON, UL94V-0,WHITE	1586172-2																																																
PHOSPOR BRONZE, PRE-TIN	NYLON, UL94V-0,WHITE	1586172-1																																																
PIN CONTACT MATERIAL AND FINISH		PART NUMBER																																																
<table border="1"> <tr> <th>PROPERTY</th> <th>UNIT</th> <th>MINIMUM</th> <th>MAXIMUM</th> </tr> <tr> <td>LENGTH</td> <td>CM</td> <td>1.52</td> <td>1.98</td> </tr> <tr> <td>WIDTH</td> <td>CM</td> <td>0.13</td> <td>0.15</td> </tr> <tr> <td>THICKNESS</td> <td>CM</td> <td>0.00127</td> <td>0.00152</td> </tr> <tr> <td>PLATING</td> <td></td> <td>0.000075</td> <td>0.000127</td> </tr> <tr> <td>FINISH</td> <td></td> <td>0.000075</td> <td>0.000127</td> </tr> </table>		PROPERTY	UNIT	MINIMUM	MAXIMUM	LENGTH	CM	1.52	1.98	WIDTH	CM	0.13	0.15	THICKNESS	CM	0.00127	0.00152	PLATING		0.000075	0.000127	FINISH		0.000075	0.000127	<table border="1"> <tr> <th>PROPERTY</th> <th>UNIT</th> <th>MINIMUM</th> <th>MAXIMUM</th> </tr> <tr> <td>LENGTH</td> <td>CM</td> <td>1.52</td> <td>1.98</td> </tr> <tr> <td>WIDTH</td> <td>CM</td> <td>0.13</td> <td>0.15</td> </tr> <tr> <td>THICKNESS</td> <td>CM</td> <td>0.00127</td> <td>0.00152</td> </tr> <tr> <td>PLATING</td> <td></td> <td>0.000075</td> <td>0.000127</td> </tr> <tr> <td>FINISH</td> <td></td> <td>0.000075</td> <td>0.000127</td> </tr> </table>	PROPERTY	UNIT	MINIMUM	MAXIMUM	LENGTH	CM	1.52	1.98	WIDTH	CM	0.13	0.15	THICKNESS	CM	0.00127	0.00152	PLATING		0.000075	0.000127	FINISH		0.000075	0.000127
PROPERTY	UNIT	MINIMUM	MAXIMUM																																															
LENGTH	CM	1.52	1.98																																															
WIDTH	CM	0.13	0.15																																															
THICKNESS	CM	0.00127	0.00152																																															
PLATING		0.000075	0.000127																																															
FINISH		0.000075	0.000127																																															
PROPERTY	UNIT	MINIMUM	MAXIMUM																																															
LENGTH	CM	1.52	1.98																																															
WIDTH	CM	0.13	0.15																																															
THICKNESS	CM	0.00127	0.00152																																															
PLATING		0.000075	0.000127																																															
FINISH		0.000075	0.000127																																															



TE CONNECTIVITY	TE CONNECTIVITY	TE CONNECTIVITY
CONNECTIONS	CONNECTIONS	CONNECTIONS
PRODUCT SPEC	PRODUCT SPEC	PRODUCT SPEC
APPLICATION SPEC	APPLICATION SPEC	APPLICATION SPEC
DATE	DATE	DATE
REVISED BY	REVISED BY	REVISED BY
CUSTOMER DRAWING	CUSTOMER DRAWING	CUSTOMER DRAWING