

## Excellent Integrated System Limited

Stocking Distributor

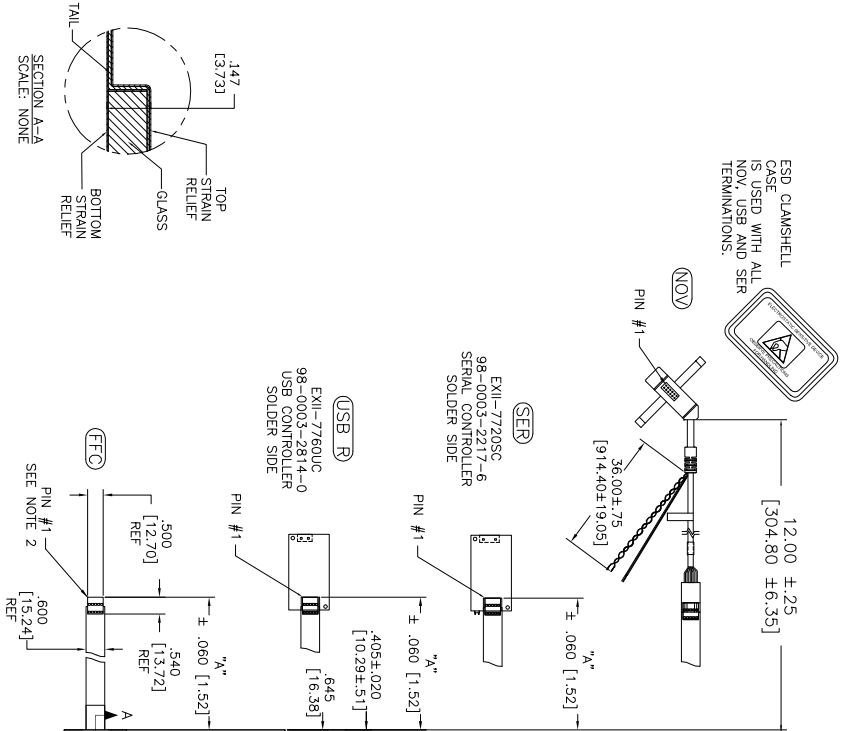
Click to view price, real time Inventory, Delivery & Lifecycle Information:

[3M](#)  
[17-8021-205](#)

For any questions, you can email us directly:  
[sales@integrated-circuit.com](mailto:sales@integrated-circuit.com)

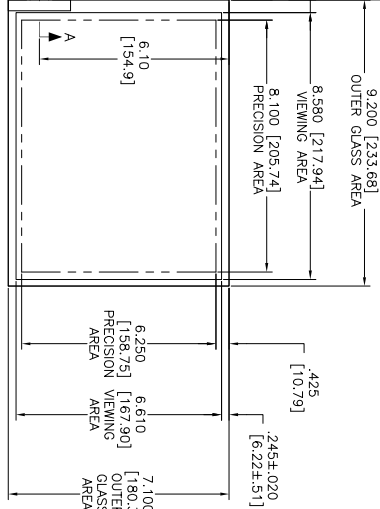
OCA DIAGONAL: 11.62 [295.18]  
 VA DIAGONAL: 10.34 [275.46]  
 PA DIAGONAL: 10.25 [260.26]

ESD CLAMPSHELL CASE IS USED WITH ALL NOV, USB AND SER TERMINATIONS.



- NOTES:
1. WEIGHT OF GLASS IN GRAMS: 321±10%
  2. NICOMATIC HOUSING P/N: OLO5
  3. NICOMATIC RECEPTACLES (PINS) MATTE TIN PLATED P/N: 14106-12
- HOUSING ORIENTED WITH LATCH DOWN

TOP LEVEL NUMBER	US NUMBER	TYPE	DM "A" (TOTAL GLASS TO CONNECTOR)	A/G FINISH	PROD SPEC
17-8021-203	98-0003-2503-9	FFC	4.27" [108.46]	AG500	23655
17-8021-205	98-0003-2504-7	FFC	8.00" [203.20]	AG500	23655
17-8021-206	98-0003-2505-4	NOV	SEE DWG	AG500	23655
17-8021-221	98-0003-2507-0	SER	4.27" [108.46]	AG500	23655
17-8021-227	98-0003-2510-4	SER	8.00" [203.20]	AG500	23655
17-8021-218	98-0003-2916-3	USB R	4.27" [108.46]	AG500	23655
17-8021-226	98-0003-2509-6	USB R	8.00" [203.20]	AG500	23655



1.47±.020 [3.73±.51]  
 TOTAL THICKNESS OF GLASS, CABLE AND STRAIN RELIEF

PINOUT	DESCRIPTION
1	LR
2	LL
3	SHIELD
4	UL
5	UR

UNITS	INCHES [MM]
TOLERANCES UNLESS SPECIFIED	
.X	±.03 [.76]
.XX	±.015 [.38]
.XXX	±.01 [0.25]
ANGLES	±1°

3M TOUCH SYSTEMS  
 METHUEN, MA  
 USA  
 THIS DOCUMENT IS THE COPYRIGHTED PROPERTY OF THE 3M COMPANY AND MAY NOT BE REPRODUCED OR TRANSMITTED IN ANY FORM OR BY ANY MEANS, ELECTRONIC OR MECHANICAL, INCLUDING PHOTOCOPYING, RECORDING, OR BY ANY INFORMATION STORAGE AND RETRIEVAL SYSTEM, WITHOUT PERMISSION IN WRITING FROM THE 3M COMPANY.

REV	DATE	BY	CHK	DESCRIPTION
H	4/13	SB		REVISED PER CO 036256
G	9/11	SB		REVISED PER CO 033533
F	8/11	SB		REVISED PER CO 033455

MARKETING DRAWING  
 SCT32NN 10.84"

DO NOT SCALE DRAWING  
 SCALE 1 = 1

SIZE	DOCUMENT NO.	SHEET	OF	REV
C	28209-MKT	1	OF 1	H