

Excellent Integrated System Limited

Stocking Distributor

Click to view price, real time Inventory, Delivery & Lifecycle Information:

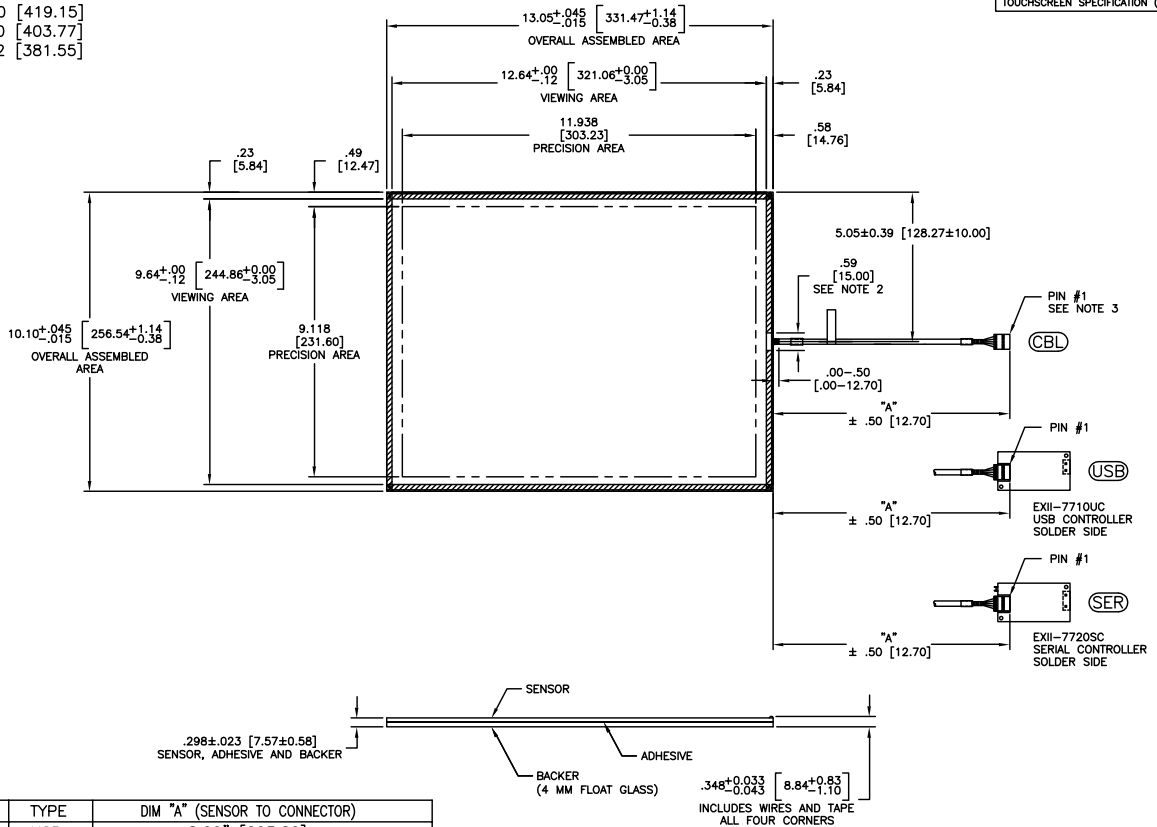
[3M](#)
[87-4061-211](#)

For any questions, you can email us directly:
sales@integrated-circuit.com

THIS PRODUCT IS MANUFACTURED IN ACCORDANCE WITH THE CURRENT TOUGH TOUCH II CAPACITIVE TOUCHSCREEN SPECIFICATION (DOCUMENT 33284).

OGA DIAGONAL: 16.50 [419.15]
 VA DIAGONAL: 15.90 [403.77]
 PA DIAGONAL: 15.02 [381.55]



 KAPTON TAPE



TOP LEVEL NUMBER	TYPE	DIM "A" (SENSOR TO CONNECTOR)
87-4061-211	USB	8.00" [203.20]
87-4061-221	SER	8.00" [203.20]
87-4061-231	CBL	8.00" [203.20]

PINOUT	
1	UL
2	UR
3	SHLD
4	LR
5	LL

- NOTES:
- WEIGHT OF GLASS IN GRAMS: 1504.12 ±10%.
 - DIMENSIONS AND TOLERANCES DO NOT APPLY TO AREA 15 MM AROUND HARNESS EXIT.
 - 5 PIN AMP CONNECTOR LATCH STYLE HOUSING P/N: 104257-4
TIN CONTACTS P/N: 1-104480-7

UNITS: INCHES [MM]	 3M TOUCH SYSTEMS METZEN, MA USA <small>© COPYRIGHT 2007 THIS DOCUMENT IS COPYRIGHTED PROPERTY OF THE 3M COMPANY AND MAY NOT BE REPRODUCED WITHOUT 3M WRITTEN PERMISSION OR USED OR DISCLOSED FOR OTHER THAN 3M AUTHORIZED PURPOSES.</small>	01 INITIAL RELEASE PER CO 027005	3/07	MTD
<small>UNLESS OTHERWISE SPECIFIED</small> .X ± .03 [.76] .XX ± .03 [.76] .XXX ± .015 [.38] ANGLES ± 2°		TITLE: MARKETING DRAWING 87-4061-2X1	DATE: 3/07 DWF:	SHEET: 1 OF 1 REV: 01
THIRD ANGLE PROJECTION 	DRAWN: MTD DATE: 3/9/07	CAD FORMAT: AUTOCAD		
DO NOT SCALE DRAWING SCALE: 1 = 1	DOC NO: 33577-MKT			