

Excellent Integrated System Limited

Stocking Distributor

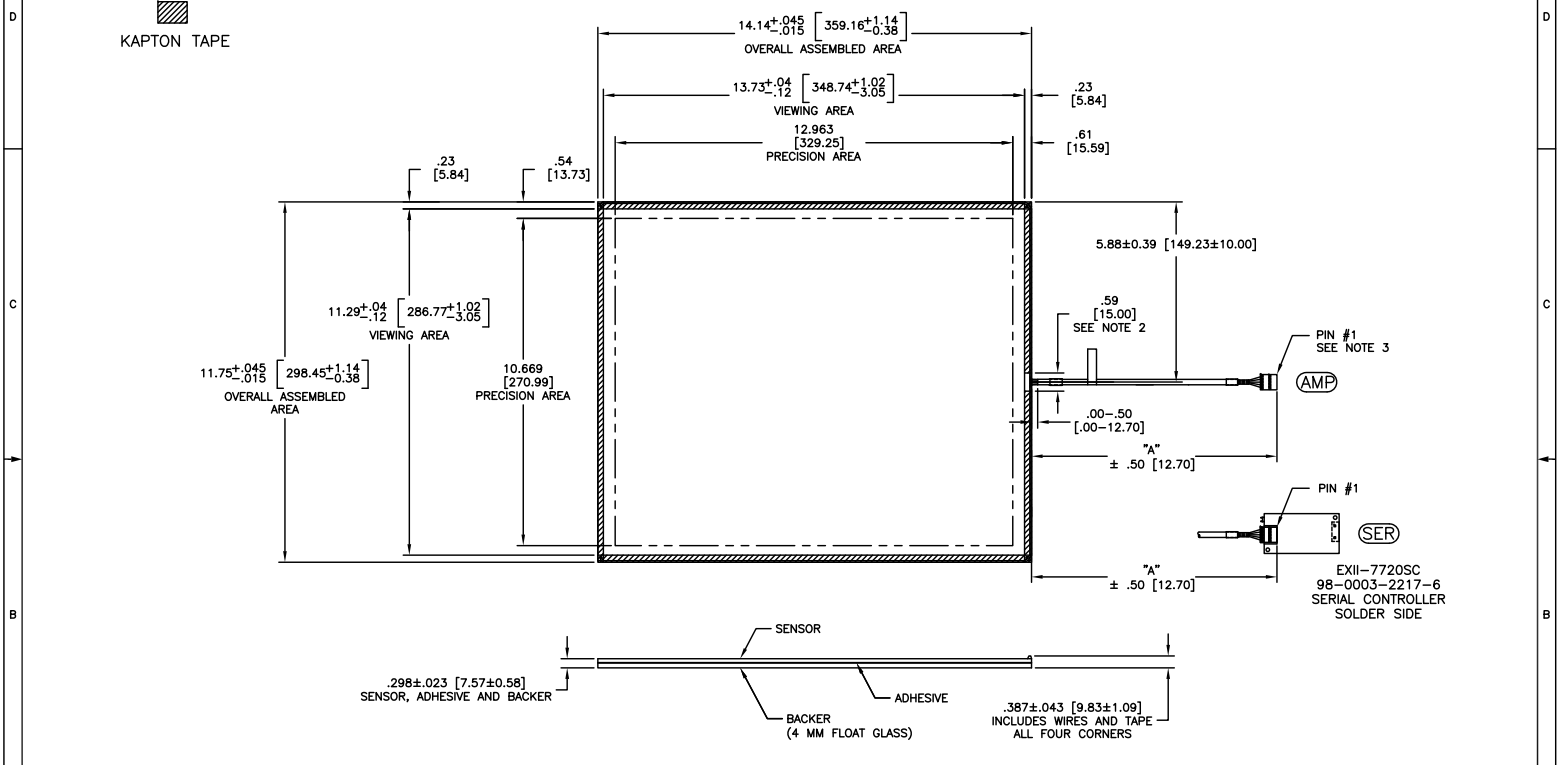
Click to view price, real time Inventory, Delivery & Lifecycle Information:

[3M](#)
[87-5961-211](#)

For any questions, you can email us directly:
sales@integrated-circuit.com

OGA DIAGONAL: 18.39 [467.10]
 VA DIAGONAL: 17.78 [451.63]
 PA DIAGONAL: 16.79 [426.43]

TOP LEVEL NUMBER	SKU NUMBER	TYPE	DIM "A" (TOTAL GLASS TO CONNECTOR)	A/G FINISH	PRODUCT SPEC
87-5961-221	98-0003-2781-1	SER	8.00" [203.20]	AG500	33264
87-5961-231	98-0003-2783-7	AMP	8.00" [203.20]	AG500	33264



NOTES:

- WEIGHT OF GLASS IN GRAMS: 1900 ±10%.
- DIMENSIONS AND TOLERANCES DO NOT APPLY TO AREA 15 MM AROUND HARNESS EXIT.
- 5 PIN AMP CONNECTOR
 LATCH STYLE HOUSING P/N: 104257-4
 TIN CONTACTS P/N: 1-104480-7

PINOUT	
1	UL
2	UR
3	SHLD
4	LR
5	LL

UNITS	INCHES [MM]
TOLERANCES UNLESS OTHERWISE SPECIFIED	
.X	± .03 [.76]
.XXX	± .015 [.38]
ANGLES	± 2°

3M 3M TOUGH SYSTEMS
 METUEN, MA
 USA
 COPYRIGHT 2007
 THIS DOCUMENT IS COPYRIGHTED PROPERTY OF THE 3M COMPANY AND MAY NOT BE REPRODUCED WITHOUT 3M WRITTEN PERMISSION OR USED OR DISCLOSED FOR OTHER THAN 3M AUTHORIZED PURPOSES.

REV	CHANGE NOTICE	DATE	CHK
03	REVISED PER CO 030448	5/09	SEB
02	REVISED PER CO 029071	6/08	SEB
01	INITIAL RELEASE PER CO 027009	3/07	MTD

MARKETING DRAWING
 SCT76NN 17.78"

DATE	3/12/07	DWG NO.	33583-MKT	SHEET	1 OF 1
SCALE	1 = 1	REV	03		