

## Excellent Integrated System Limited

Stocking Distributor

Click to view price, real time Inventory, Delivery & Lifecycle Information:

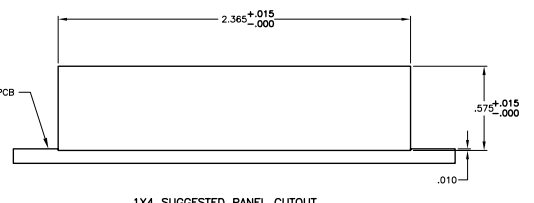
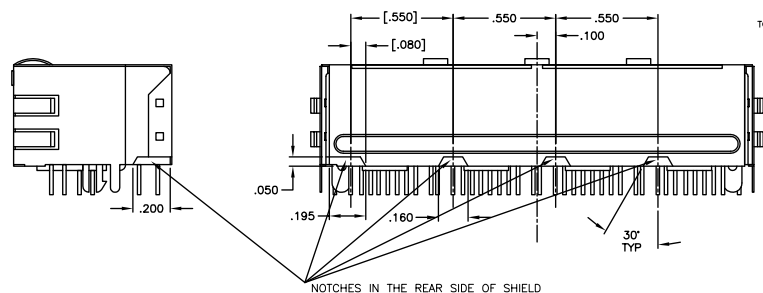
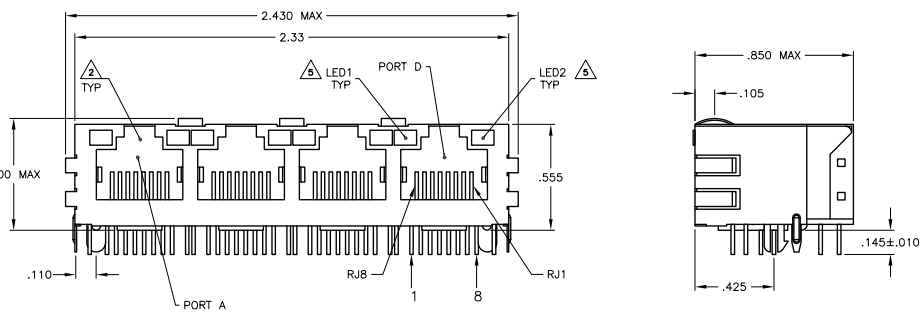
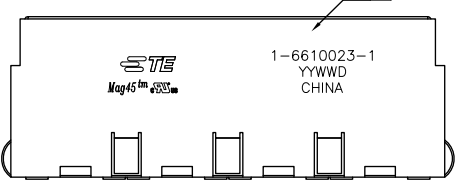
[TE Connectivity AMP Connectors](#)  
[1-6610023-1](#)

For any questions, you can email us directly:

[sales@integrated-circuit.com](mailto:sales@integrated-circuit.com)

REV	DATE	BY	CHK	APP	REVISIONS
AA	22				REVISED
E	ECO-11-023078				REVISED BY JC KZ

**MECHANICAL:**



- 1 MATERIALS:
  - HOUSING - THERMOPLASTIC PET POLYESTER FLAMMABILITY RATING UL 94V-0.
  - SHIELD - 0.010" THICK, C26800 BRASS PREPLATED WITH 30μINCH MIN SEMI-BRIGHT NICKEL.
  - SOLDER TABS POST DIPPED WITH 100μINCH MIN SAC SOLDER.
  - HOOD JACK CONTACTS - 0.0157" X 0.018" PHOSPHOR BRONZE, 50μINCH MIN OVERALL NICKEL UNDERPLATE WITH SELECT 50μINCH MIN HARD GOLD FINISH PLATE. SOLDER TAILS WITH 100μINCH MIN MATTE TIN AND/OR SAC SOLDER DIP.
  - LIGHT EMITTING DIODE(LED) - DIFFUSED EPOXY LENS, 0.020" X 0.020" CARBON STEEL WIREFRAME.
  - LEADS PRE-PLATED WITH 80μINCH SILVER OVER 40μINCH NICKEL UNDERPLATE OVER 40μINCH COPPER UNDERPLATE. POST-PLATED WITH 100μINCH MIN MATTE TIN AND/OR SAC SOLDER DIP OR PURE TIN SOLDER DIP.
- 2 RJ45 JACK CAVITY CONFORMS TO FCC RULES AND REGULATIONS PART 68, SUB PART F.
- 3 MAGNETICS
  - IMPEDANCE: 100 OHMS
  - TURNS RATIO (CHP-CABLE): TX = 11, RX = 11
  - OPEN CIRCUIT INDUCTANCE (OCL): 350μH MIN @100MHz, 0.1VRMS, 8mA DC BIAS FROM -40°C TO +85°C, TX AND RX
  - PERFORMANCE @ 25°C
  - INSERTION LOSS (IL): 1.1dB MAX FROM 0.5MHz TO 100MHz
  - RETURN LOSS (RL): 18dB MIN FROM 0.5MHz TO 30MHz
  - 18-20LOG(f/300)dB MIN FROM 30.3MHz TO 60MHz
  - 12dB MIN FROM 60.3MHz TO 80MHz
  - CROSSTALK ATTENUATION: 35dB MIN FROM 0.5MHz TO 40MHz
  - 33-20\*LOG(f/50)dB MIN FROM 40.1MHz TO 100MHz
  - COMMON MODE REJECTION RATIO (CMRR): 30dB MIN FROM 0.5MHz TO 100MHz
  - ISOLATION VOLTAGE: 2250VDC (MAX) FOR 60 SECONDS WITH A RISE TIME OF 500V/SEC AND WITH ALL PORTS CONNECTED.
- 4. OPERATING TEMPERATURE: FROM -40°C TO +85°C.
- 5 THE LED WITH 250 OHM RESISTORS, LED IS DRIVEN WITH 5V VOLTAGE AND THE MAX OPERATING CURRENT IS 20mA.
  - LED COLOR/DOMINANT WAVELENGTH(GREEN): 568nm TYP. AT VF=5V
  - FORWARD CURRENT (IF): GREEN 12 mA TYP. AT VF=5V
  - DOMINANT WAVELENGTH (RED): YELLOW 588nm TYP. AT VF=5V
  - FORWARD CURRENT (IF): YELLOW 13 mA TYP. AT VF=5V
- 6 INDICATED CONNECTIONS ARE FOR NIC CONFIGURATION. THE MAGNETICS ARE SYMMETRICAL AND SUPPORT AUTO-HDI/MDIX.
- 7 TE CONNECTIVITY LOGO, PART NUMBER, DATE CODE, COUNTRY OF ORIGIN AND AGENCY APPROVAL MARKING IN APPROXIMATE LOCATION SHOWN.
- 8 THESE PARTS ARE RECOMMENDED FOR WAVE SOLDERING PROCESS. PEAK WAVE SOLDERING TEMPERATURE IS 265°C MAX, 10 SECONDS MAX.

NO	YES	GREEN	YELLOW	5-6610023-1
NO	NO	GREEN	GREEN	6-6610023-1
YES	NO	GREEN	GREEN	1-6610023-1
YES	NO	GREEN	YELLOW	6610023-1

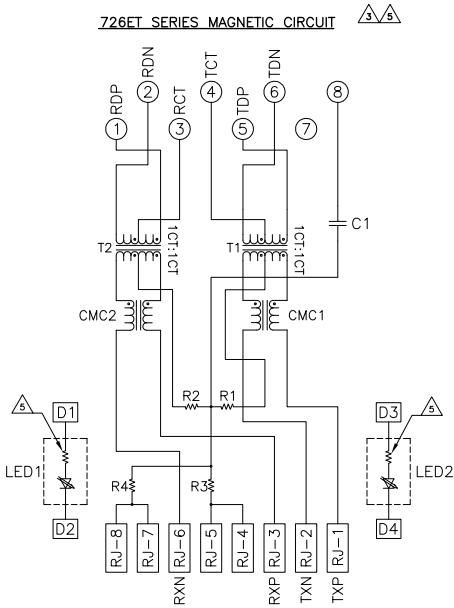
5 NOTCHES IN SHIELD	8KV DECOUPLING CAPACITOR	LED1	LED2	PART NUMBER

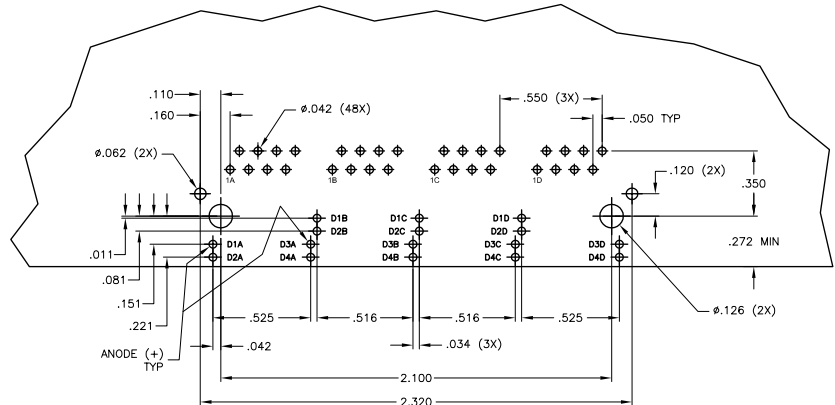
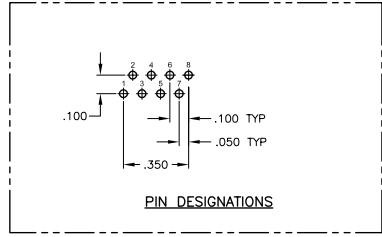
THIS DRAWING IS A CONTROLLED DOCUMENT		TE CONNECTIVITY
REV	DATE	DESCRIPTION
1	108-2100	1X4 MAG45(TM) MODULAR JACK, 7NSMT INDUSTRIAL TEMP SCHEMATIC, 28 SERIES CIRCUIT, SHIELDED, WITH RESISTOR LEADS
1	00779	6610023
CUSTOMER DRAWING		REV 4.1

REV	DATE	BY	CHK	APP
AA	22			

726ET SERIES MAGNETIC CIRCUIT



R1-R4 = 75 OHMS, 1/16W RESISTORS  
 C1 = 1000 pF, 2KV CAPACITOR



SUGGESTED PCB LAYOUT  
 (Component Side)

THIS DRAWING IS A CONTROLLED DOCUMENT		REV. 4.1	DATE 2 2 01	BY E
DESIGNED BY	APPROVED BY	DATE	REV.	BY
108-2100				
TE Connectivity		114 MAGJACK™ MODULAR JACK, 726ET INDUSTRIAL TEMP SCHEMATIC, 28 SERIES CIRCUIT, SHIELDED, WITH RESISTOR LEADS		
A1 00779		C-6610023		
CUSTOMER DRAWING				