

Excellent Integrated System Limited

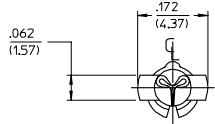
Stocking Distributor

Click to view price, real time Inventory, Delivery & Lifecycle Information:

[Molex Connector Corporation](#)
[0002092134](#)

For any questions, you can email us directly:
sales@integrated-circuit.com

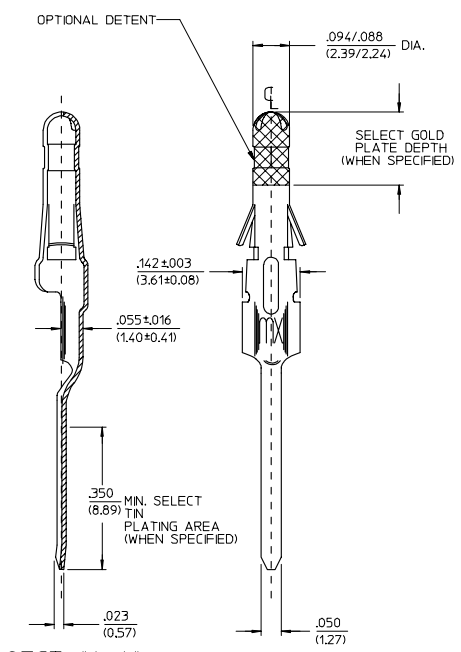
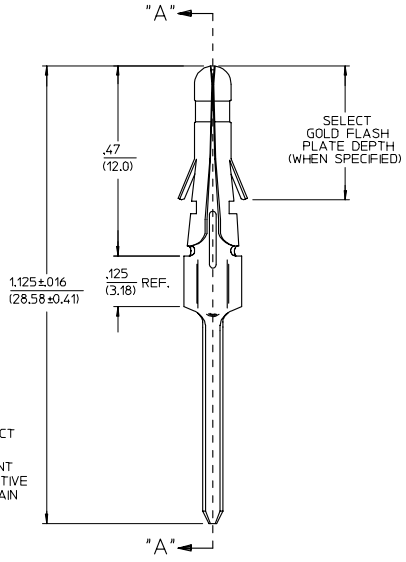
| PART NO. | ENG. NO. |
|------------|----------------|
| 02-09-2133 | 1376-(P909)IL |
| 02-09-2134 | 1376-A(P909)IL |
| 02-09-6138 | 1376-(228)IL |
| 02-09-6132 | 1376-(558)IL |
| 02-09-6134 | 1376-A(558)IL |
| 50-34-8509 | 1376-A(P154)IL |



LEGEND

1376-*(*)*(*)*(*)*(*)*
 OPTIONAL DETENT
 BLANK-WITH DETENT
 A= WITHOUT DETENT
 FORM L=LOOSE
 P=PREPLATE
 BLANK=POSTPLATE
 FINISH CODE

- NOTES:**
- MATERIAL: BRASS
 - FINISHES:
 - * 909 HOT TIN DIP .000100/(0.00254) MIN.
 - * 154 OVERALL TIN .000100/(0.00254) MIN. OVER .000050/(0.00127) MIN. NICKLE OVERALL.
 - 558 SELECT GOLD PLATE .000030/(0.00076) MIN. IN CONTACT AREA OVER .000050/(0.00127) MIN. NICKLE OVERALL WITH .000010/(0.00025) MAX. GOLD FLASH.
 - * 228 SELECT GOLD PLATE .000030/(0.00075) MIN. IN CONTACT AREA. SELECT TIN PLATE .000100/(0.00250) MIN. IN TAIL AREA OVER .000050/(0.00125) NICKLE OVERALL WITH SELECT GOLD FLASH .000010/(0.00025) MAX IN AREA INDICATED.
 - * THE PRIMARY SHIPPING CARTON WILL BE LABELED, "COMPLIANT TO ROHS DIRECTIVE 2002/95/EC AND ELV ANNEX II OF DIRECTIVE 2000/53/EC". AND CARTONS WITHOUT THIS LABEL MAY CONTAIN PRODUCT WITH TIN-LEAD.
 - PRODUCT SPECIFICATION: PS-02-09
 - PACKAGING INFORMATION: NOT AVAILABLE.
 - TERMINALS FOR USE WITH 0.093/(2.36) SERIES HOUSINGS.
 - RECOMMENDED P.C. BOARD HOLE SIZE IS .062±.002/(1.57±0.05) DIA.
 - INSERTION FORCE: 3.5 LBS. MAX. WHEN TERMINAL IS INSERTED INTO AN .093 SERIES HOUSING.



SECT. "A-A"

| | | | | | | |
|---|----------------------|--|---------------------------------|-------------------------------------|--|--------------------|
| ADD P/N 1376 -A(P154) EC NO: UCP2006-2524 DRWIN:ALHAG 2006/05/15 CHKD:LSCHMDT 2006/05/22 APPR:FSMITH 2006/07/14 | QUALITY SYMBOLS | GENERAL TOLERANCES (UNLESS SPECIFIED) | SCALE 0.25" THICK SPRING TEMPER | DESIGN UNITS INCH | THIRD ANGLE PROJECTION | REVISE ON CAD ONLY |
| | 4 PLACES ±.005 ±.005 | mm INCH | IN/MM | TITLE | P.C. TAIL TERMINAL, MALE, .093/(2.36) DIA. | |
| | 3 PLACES ±.010 ±.010 | DRAWN BY DATE | 1991/02/18 | MOLEX INCORPORATED | | |
| | 2 PLACES ±.025 ±.014 | CHECKED BY DATE | 1991/02/18 | MATERIAL NO. DOCUMENT NO. SHEET NO. | | |
| 1 PLACE ±.036 ±.010 | APPROVED BY DATE | 1991/02/19 | SEE CHART SD-1376-* 1 OF 1 | | | |
| M1 | DESCRIPTION | DRAFT WHERE APPLICABLE MUST REMAIN WITHIN DIMENSIONS | | | | |
| THIS DRAWING CONTAINS INFORMATION THAT IS PROPRIETARY TO MOLEX INCORPORATED AND SHOULD NOT BE USED WITHOUT WRITTEN PERMISSION | | | | | | |