

## **Excellent Integrated System Limited**

Stocking Distributor

Click to view price, real time Inventory, Delivery & Lifecycle Information:

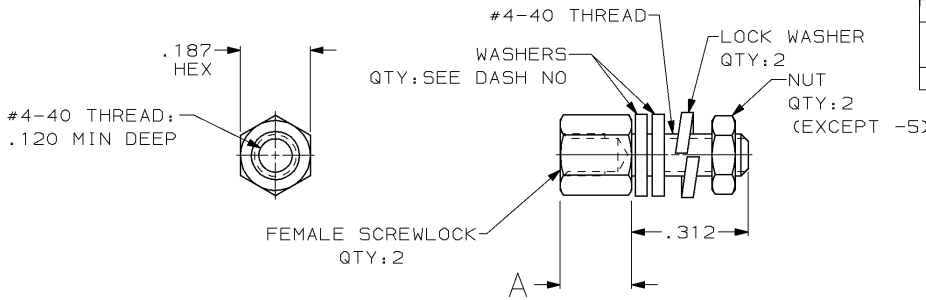
[TE Connectivity AMP Connectors  
205817-1](#)

For any questions, you can email us directly:  
[sales@integrated-circuit.com](mailto:sales@integrated-circuit.com)

DRAWING MADE IN THIRD ANGLE PROJECTION

THIS DRAWING IS UNPUBLISHED. RELEASED FOR PUBLICATION ,19 .  
 © COPYRIGHT 19 BY AMP INCORPORATED. ALL INTERNATIONAL RIGHTS RESERVED.

| LOC | DIST | P | F | ZONE | LTR | DESCRIPTION                        | DATE       | APPD |
|-----|------|---|---|------|-----|------------------------------------|------------|------|
| BD  | 48   |   |   |      |     |                                    |            |      |
|     |      |   |   | F1   |     | ADDED 1--2 PER NPR 4839            | 07/07/93   | NB   |
|     |      |   |   | G    |     | OBS 1-1 PER EC 0020-1514-93        | 04/15/94   | LF   |
|     |      |   |   | H    |     | OBSOLETED -9<br>PER EC 0020-667-95 | 02 FEB 96  | CS   |
|     |      |   |   | J    |     | OBS -12 PER EC 0420-141-96         | 17 SEPT 97 | SB   |



- 1 ZINC PLATED PER ASTM B633, TYPE II, CLASS SC1, YELLOW CHROMATE.
- 2 ZINC PLATED PER ASTM B633, TYPE III, CLASS SC1, CLEAR CHROMATE.
- 3. PARTS PACKAGED UNASSEMBLED.
- 4 PARTS PACKED AS A UNIT KIT.
- 5 PARTS INDIVIDUALLY BULK PACKED & SHIPPED AS A UNIT PACKAGE.
- 6. IDENTIFIED BY MIL SPEC PART NUMBER M24308/26-01 FOR -8 ONLY & AMP PART NUMBER (FOR ALL DASH NUMBERS).
- 7 SMALL PACK PACKAGING.

|          |   |           |   |            |
|----------|---|-----------|---|------------|
| OBSOLETE | 4 | .188      | 1 | 1-205817-2 |
| OBSOLETE | 0 | .188      | 2 | 1-205817-1 |
| OBSOLETE | 0 | .188      | 2 | 1-205817-0 |
| OBSOLETE | 6 | .188      | 1 | 205817-9   |
|          | 6 | .188      | 1 | 205817-8   |
| OBSOLETE | 4 | .191±.002 | 1 | 205817-7   |
| OBSOLETE | 4 | .191±.002 | 1 | 205817-6   |
|          | 2 | .188      | 2 | 205817-5   |
|          | 4 | .188      | 2 | 205817-4   |
|          | 4 | .188      | 2 | 205817-3   |
|          | 4 | .188      | 1 | 205817-2   |
|          | 4 | .188      | 1 | 205817-1   |

| PACKAGING | NO OF WASHERS | A | FINISH | PART NUMBER |
|-----------|---------------|---|--------|-------------|
|-----------|---------------|---|--------|-------------|

|   |   |  |
|---|---|--|
| DO NOT SCALE PRINT.<br>UNLESS SPECIFIED<br>DIMENSIONS IN INCHES<br>TOLERANCES ON:<br>2 PLC DEC ± .005<br>3 PLC DEC ± .005<br>ANGLES ± - | DR 4-11-90<br>J GALLUCCI BG<br>CHK 6-15-90<br>M G LENKER<br>APPD 7-11-90<br>J E WESTMAN<br>APPD 7-18-90<br>J ASSINI<br>PRODUCT SPEC<br>-<br>APPLICATION SPEC<br>-<br>WEIGHT - | <b>AMP</b> AMP INCORPORATED<br>Harrisburg, Pa. 17105<br>NAME<br>KIT, SCREWLOCK, FEMALE,<br>AMPLIMITE™ HD-20<br>SIZE <b>B</b> FSCM NO 00779 DRAWING NO 205817<br>SCALE 4:1 SHEET 1 OF 1 |
|---|---|--|