



**Distributor of Amphenol Commercial Products: Excellent Integrated System Limited**  
Datasheet of MDBE09PE860 - D-Sub Connector Plug, Male Pins 9 Position Through Hole  
Solder

Contact us: [sales@integrated-circuit.com](mailto:sales@integrated-circuit.com) Website: [www.integrated-circuit.com](http://www.integrated-circuit.com)

---

## **Excellent Integrated System Limited**

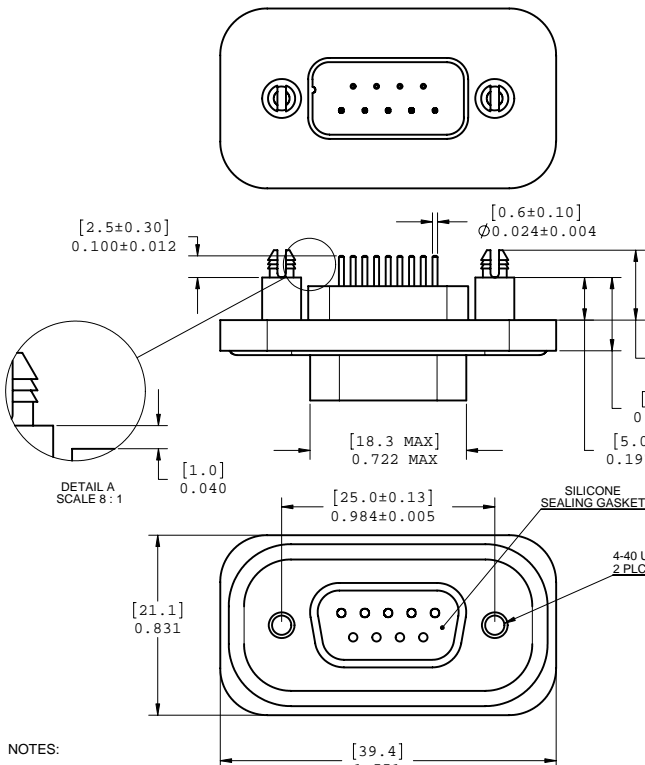
Stocking Distributor

Click to view price, real time Inventory, Delivery & Lifecycle Information:

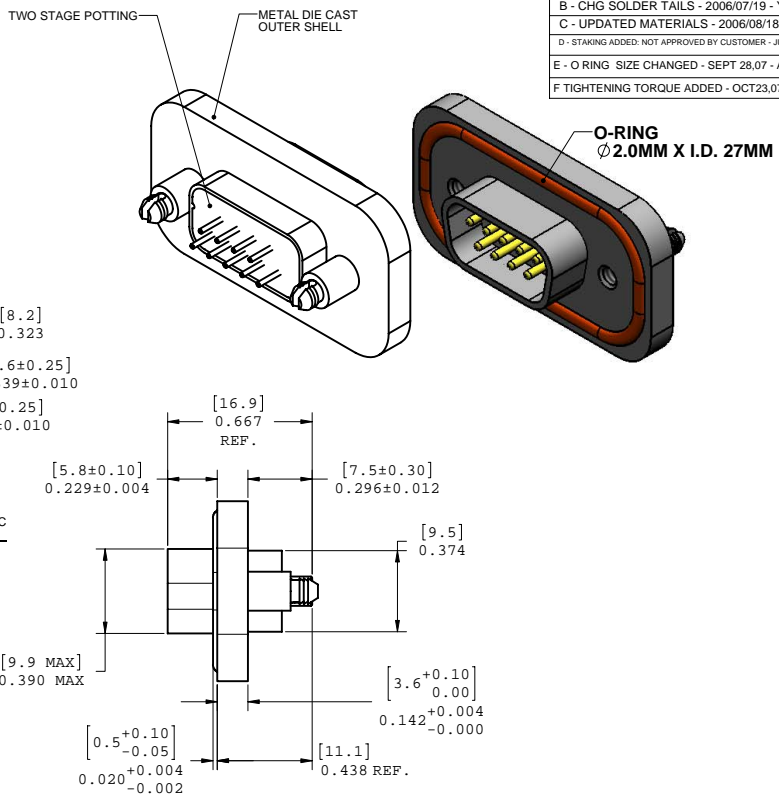
[Amphenol Commercial Products](#)  
[MDBE09PE860](#)

For any questions, you can email us directly:  
[sales@integrated-circuit.com](mailto:sales@integrated-circuit.com)

REV	DESCRIP	DATE	APPRVD
A	UPDATED NOTES	2006/06/16	YK.
B	CHG SOLDER TAILS	2006/07/19	YK.
C	UPDATED MATERIALS	2006/08/18	YK.
D	STAKING ADDED: NOT APPROVED BY CUSTOMER	JUNE 16,07	
E	O-RING SIZE CHANGED	SEPT 28,07	A.G.
F	TIGHTENING TORQUE ADDED	OCT23,07	A.G.



- NOTES:
- MATERIAL:
    - SHELL: ZINC ALLOY 50 MICRO INCH MINIMUM NICKEL PLATING.
    - CONTACTS: COPPER ALLOY 30 MICRO INCH GOLD OVER 50 MICRO INCH NICKEL PLATING.
    - INSULATOR: THERMOPLASTIC POLYESTER RESIN (DSM) 94V-0 FLAMMABILITY RATING.
    - GASKETS: SILICONE RUBBER S7001R, 70 DUROMETER.
    - SEALING COMPOUND: STYCAST 2651 WITH CATALYST 11
  - FEATURES: SEALED CONNECTOR IN THE MATED AND UNMATED CONDITIONS.
  - OPERATING TEMPERATURE: -40°C TO +105°C.
  - ENVIRONMENT PERFORMANCE: IP67.
  - PART IS RoHS COMPLIANT.
  - REAR SEAL TO WITHSTAND TEMPERATURE EXPOSURE OF SOLDER BATH 265°C FOR 8 SEC & SOLDER PREHEAT 150°C FOR 180.
  - SEALED TO WITH PRESSURE UP TO 5 PSI AFTER HIGH TEMPERATURE EXPOSURE.
  - RECOMMENDED TORQUE FOR SCREW TIGHTENING:
    - STEEL SCREW WITH MORE THAN 0.90° OF THREAD ENGAGEMENT: 4.0 TO 5.75 IN-LBS
    - BRASS SCREW : 3.1 TO 4.5 IN-LBS



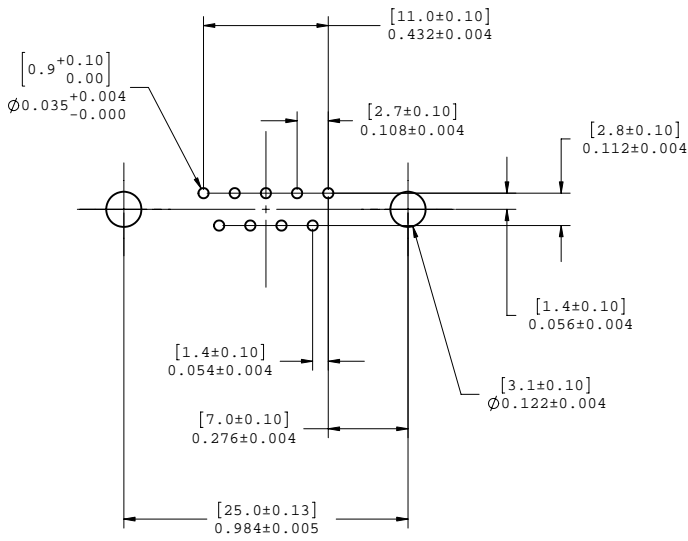
AMPHENOL PART NUMBER: MDB-E09PE-860

UNLESS OTHERWISE SPECIFIED DIMENSIONS ARE IN MILLIMETER TOLERANCES ARE: DECIMALS XX ± .10 X ± .25 ANGLES ± 1°	APPROVALS	DATE	Amphenol Canada Corp.		
	DRAWN Y.KUZYK	2006/07/24			
	DESIGNED S.SEMENOV	2006/07/24	TITLE 09 PIN CONNECTOR		
	CHECKED				
MATERIAL AND FINISH	QA APPD		SIZE C	DWG. NO. P-MDB-E09PE-860	REV. F
REF.	IE APPD		SCALE 3:1	PROJECT MDB	SHEET 1 OF 2
CODE IDENT. NO.	DWG APPD	2006/07/24			

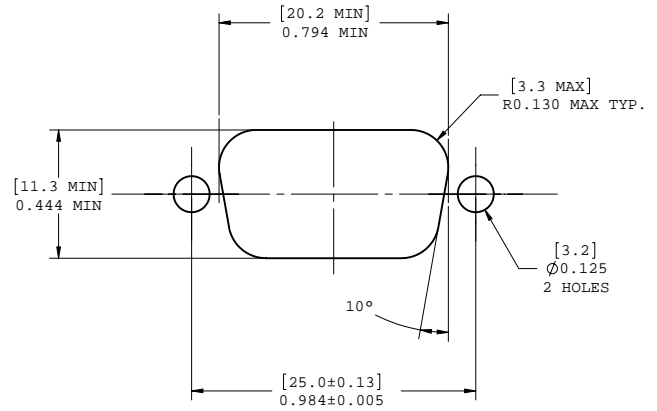
DO NOT SCALE DRAWING  
 THIS DOCUMENT CONTAINS PROPRIETARY INFORMATION AND SUCH INFORMATION MAY NOT BE DISCLOSED TO OTHERS FOR ANY PURPOSE OR USED FOR MANUFACTURING PURPOSES WITHOUT PERMISSION FROM AMPHENOL CANADA CORP.

Contact us: [sales@integrated-circuit.com](mailto:sales@integrated-circuit.com) Website: [www.integrated-circuit.com](http://www.integrated-circuit.com)

REV -	DESCRIP -	DATE -	APPRVD



**PCB LAYOUT**



**EXISTING PANEL CUTOUT**



UNLESS OTHERWISE SPECIFIED DIMENSIONS ARE IN MILLIMETER TOLERANCES ARE:		APPROVALS	DATE	<b>Amphenol Canada Corp.</b>	
DECIMALS	ANGLES	DRAWN	2006/07/24		
XX ± .10	± 1°	DESIGNED	2006/07/24	TITLE <b>09 PIN CONNECTOR</b>	
X ± .25		S.SEMENOV			
MATERIAL AND FINISH		CHECKED		SIZE C	
REF.		QA APPD			
CODE IDENT. NO.		IE APPD		SCALE 4:1	PROJECT MDB
		DWG APPD	2006/07/24	SHEET 2 OF 2	

DO NOT SCALE DRAWING  
 THIS DOCUMENT CONTAINS PROPRIETARY INFORMATION AND SUCH INFORMATION MAY NOT BE DISCLOSED TO OTHERS FOR ANY PURPOSE  
 OR USED FOR MANUFACTURING PURPOSES WITHOUT PERMISSION FROM AMPHENOL CANADA CORP.

