



Distributor of Amphenol Commercial Products: Excellent Integrated System Limited
Datasheet of MDBA26PE860 - D-Sub Connector Plug, Male Pins 26 Position Through Hole
Solder

Contact us: sales@integrated-circuit.com Website: www.integrated-circuit.com

Excellent Integrated System Limited

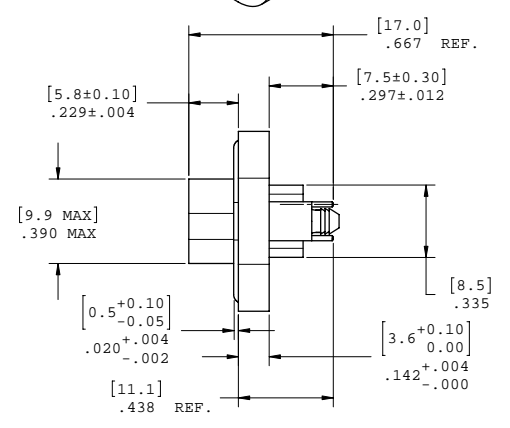
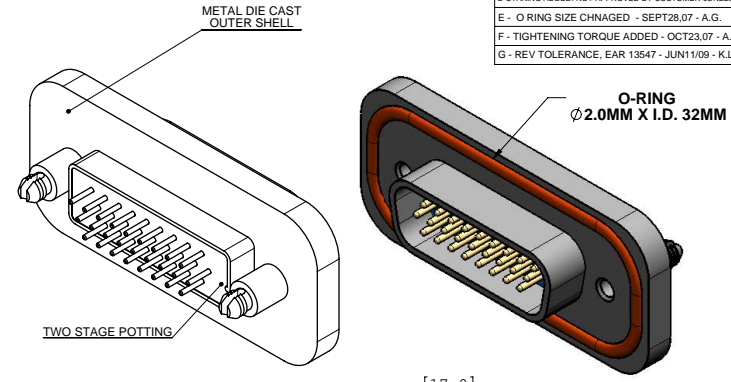
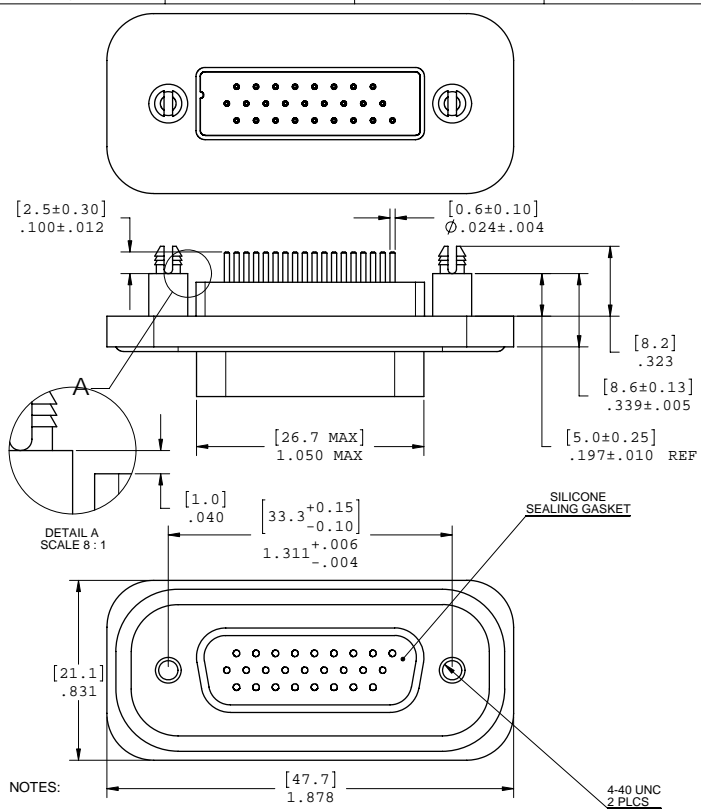
Stocking Distributor

Click to view price, real time Inventory, Delivery & Lifecycle Information:

[Amphenol Commercial Products](#)
[MDBA26PE860](#)

For any questions, you can email us directly:
sales@integrated-circuit.com

REV	DESCRIP	DATE	APPRVD
A	UPDATED NOTES	2006/06/16	- YK.
B	CHG SOLDER TAILS	2006/07/18	- YK.
C	UPDATED MATERIALS	2006/08/18	- YK.
D-STAKING ADDED: NOT APPROVED BY CUSTOMER-JUNE28.07-A.G.			
E	O RING SIZE CHANGED	SEPT28.07	- A.G.
F	TIGHTENING TORQUE ADDED	OCT23.07	- A.G.
G	REV TOLERANCE, EAR 13547	JUN11/09	- K.L.



NOTES:
 1. MATERIAL:
 - SHELL: ZINC ALLOY 50 MICRO INCH MINIMUM NICKEL PLATING.
 - CONTACTS: COPPER ALLOY 30 MICRO INCH GOLD OVER 50 MICRO INCH NICKEL PLATING.
 - INSULATOR: THERMOPLASTIC POLYESTER RESIN (DSM) 94V-0 FLAMMABILITY RATING.
 - GASKETS: SILICONE RUBBER S7001R, 70 DUROMETER.
 - SEALING COMPOUND: STYCAST 2651 WITH CATALYST 11
 2. FEATURES: SEALED CONNECTOR IN THE MATED AND UNMATED CONDITIONS.
 3. OPERATING TEMPERATURE: -40°C TO +105°C.
 4. ENVIRONMENT PERFORMANCE: IP67.
 5. PART IS RoHS COMPLIANT.
 6. REAR SEAL TO WITHSTAND TEMPERATURE EXPOSURE OF SOLDER BATH 265°C FOR 8 SEC & SOLDER PREHEAT 150°C FOR 180 SEC.
 7. SEALED TO WITHSTAND PRESSURE UP TO 5 PSI AFTER HIGH TEMPERATURE EXPOSURE.
 8. RECOMMENDED TORQUE FOR SCREW TIGHTENING:
 - STEEL SCREW WITH MORE THAN .090" OF THREAD ENGAGEMENT: 4.0 TO 5.75 IN-LBS.
 - BRASS SCREW: 3.1 TO 4.5 IN-LBS.

- 4-40 UNC
 2 PLCS
- DO NOT SCALE DRAWING
 THIS DOCUMENT CONTAINS PROPRIETARY INFORMATION AND SUCH INFORMATION MAY NOT BE DISCLOSED TO OTHERS FOR ANY PURPOSE OR USED FOR MANUFACTURING PURPOSES WITHOUT PERMISSION FROM AMPHENOL CANADA CORP.

AMPHENOL PART NUMBER: MDB-A26PE-860

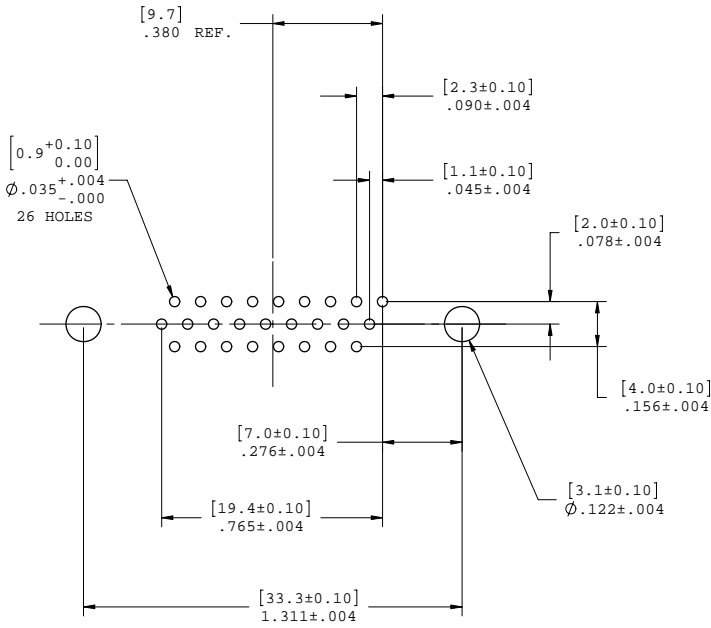


UNLESS OTHERWISE SPECIFIED DIMENSIONS ARE IN MILLIMETER TOLERANCES ARE:		APPROVALS	DATE	Amphenol Canada Corp.	
DECIMALS XX ±.10	ANGLES X ±.25	DRAWN Y.KUZYK	2006/07/24	TITLE MDB SERIES RUGGED D-SUB CONNECTOR, 26 SIZE HIGH DENSITY PIN, VERTICAL PCB TAIL, RoHS COMPLIANT	
		DESIGNED S.SEMENOV	2006/07/24		
		CHECKED			
		QA APPD			
MATERIAL AND FINISH		IE APPD		SIZE C	DWG. NO. P-MDB-A26PE-860
REF.		DWG APPD	2006/07/24	SCALE 1:0.333333	PROJECT MDB-A26
CODE IDENT. NO.					REV. G
					SHEET 1 OF 2

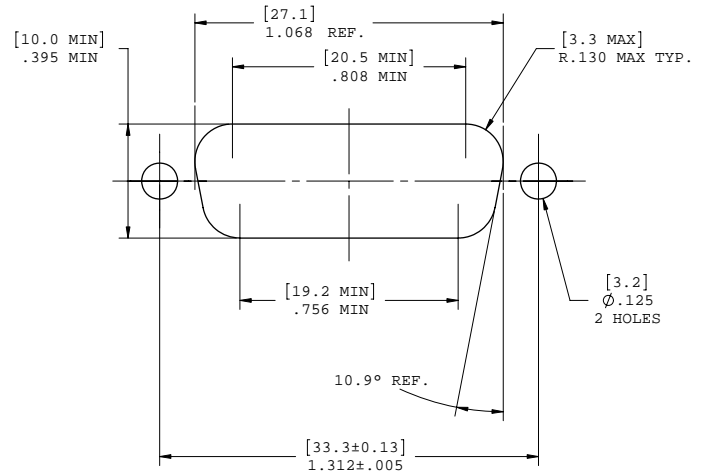


Contact us: sales@integrated-circuit.com Website: www.integrated-circuit.com

REV - DESCRIPT - DATE - APPRVD
SEE PAGE 1



PCB LAYOUT



EXISTING PANEL CUTOUT



UNLESS OTHERWISE SPECIFIED DIMENSIONS ARE IN MILLIMETER TOLERANCES ARE: DECIMALS .XX ± .10 .X ± .25 ANGLES ± 1°	APPROVALS	DATE	Amphenol Canada Corp.		
	DRAWN Y.KUZYK	2006/07/24			
	DESIGNED S.SEMENOV	2006/07/24	TITLE MDB SERIES RUGGED D-SUB CONNECTOR, 26 SIZE HIGH DENSITY PIN, VERTICAL PCB TAIL, RoHS COMPLIANT		
	CHECKED				
MATERIAL AND FINISH	QA APPD		SIZE C	DWG. NO. P-MDB-A26PE-860	REV. G
REF.	IE APPD		SCALE 4:1	PROJECT MDB-A26	SHEET 2 OF 2
CODE IDENT. NO.	DWG APPD	2006/07/24			

DO NOT SCALE DRAWING
 THIS DOCUMENT CONTAINS PROPRIETARY INFORMATION AND SUCH INFORMATION MAY NOT BE DISCLOSED TO OTHERS FOR ANY PURPOSE OR USED FOR MANUFACTURING PURPOSES WITHOUT PERMISSION FROM AMPHENOL CANADA CORP.

