

## **Excellent Integrated System Limited**

Stocking Distributor

Click to view price, real time Inventory, Delivery & Lifecycle Information:

[Hirose Electric Co Ltd](#)  
[ZX64-B-5S-1000-STDA](#)

For any questions, you can email us directly:

[sales@integrated-circuit.com](mailto:sales@integrated-circuit.com)

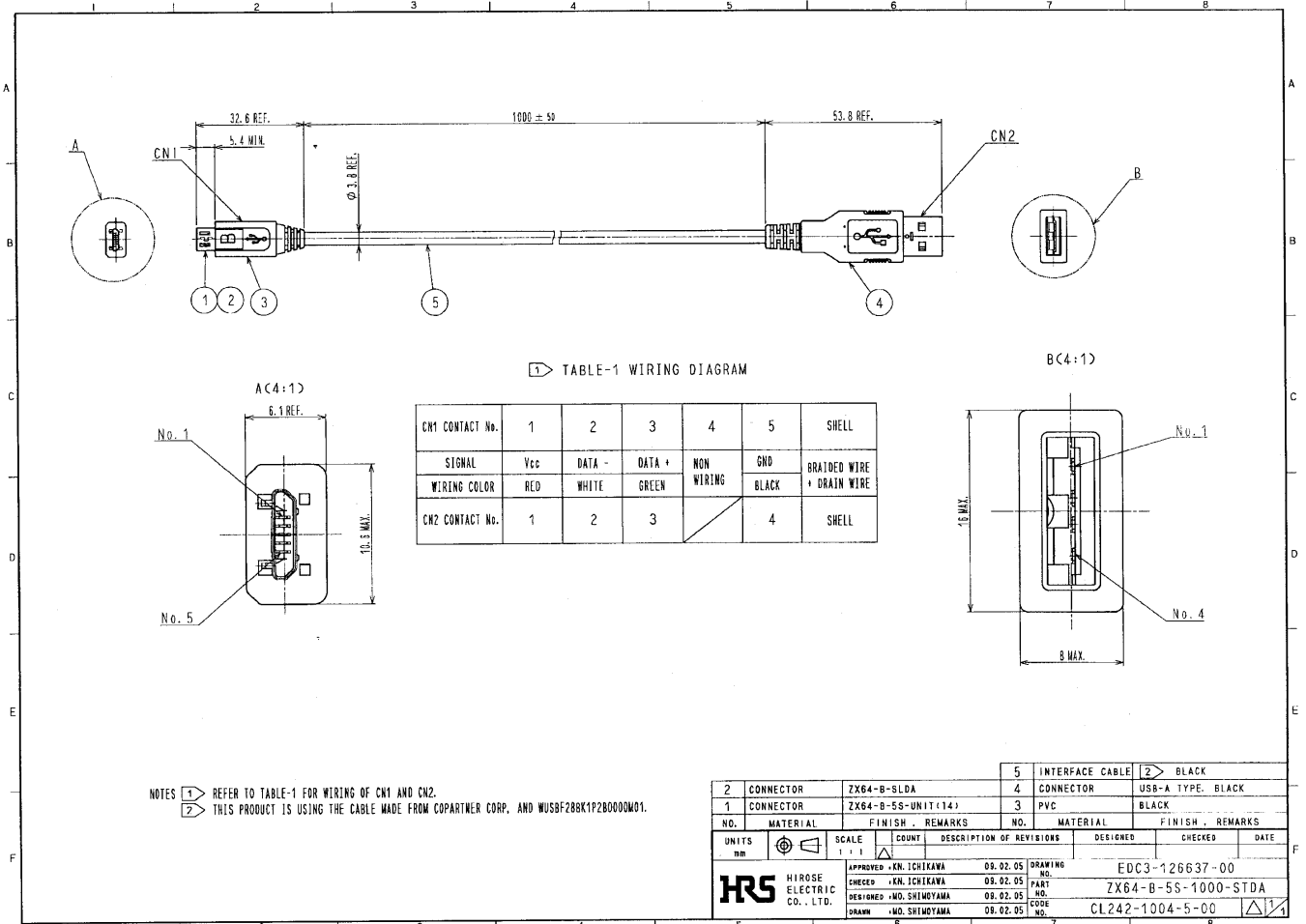
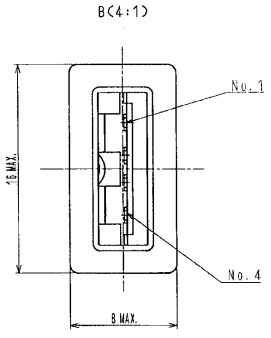
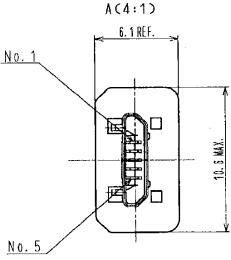


TABLE-1 WIRING DIAGRAM

CN1 CONTACT No.	1	2	3	4	5	SHELL
SIGNAL	Vcc	DATA -	DATA +	NON WIRING	GND	BRAIDED WIRE
WIRING COLOR	RED	WHITE	GREEN		BLACK	DRAIN WIRE
CN2 CONTACT No.	1	2	3		4	SHELL



NOTES  
 1 REFER TO TABLE-1 FOR WIRING OF CN1 AND CN2.  
 2 THIS PRODUCT IS USING THE CABLE MADE FROM COPARTNER CORP. AND WUSBF288K1P280000M01.

2	CONNECTOR	ZX64-B-SLDA	5	INTERFACE CABLE	2	BLACK
1	CONNECTOR	ZX64-B-5S-UNIT(14)	4	CONNECTOR	4	USB-A TYPE, BLACK
NO.	MATERIAL	FINISH	REMARKS	NO.	MATERIAL	FINISH
				3	PVC	BLACK
UNITS	SCALE	COUNT	DESCRIPTION OF REVISIONS	DESIGNED	CHECKED	DATE
1	1:1	1				
HIROSE ELECTRIC CO., LTD.			APPROVED: KN. ICHIKAWA 08.02.05 CHECKED: KN. ICHIKAWA 08.02.05 DESIGNED: MO. SHIMOMYAMA 08.02.05 DRAWN: MO. SHIMOMYAMA 08.02.05	DRAWING NO. EDC3-126637-00 PART NO. ZX64-B-5S-1000-STDA CODE NO. CL242-1004-5-00		



APPLICABLE STANDARD				USB2.0 SPECIFICATION AND MICRO-USB CABLE AND CONNECTORS SPECIFICATION.			
OPERATING TEMPERATURE RANGE		STORAGE TEMPERATURE RANGE		SIGNAL ONLY		POWER APPLY	
-30°C TO +80°C		-30°C TO +80°C		1.0 A/pin		1.0 A/pin	
RATING		CURRENT		1.8 A/pin (PIN No.1, No.5)		0.5 A/pin (PIN No.2-No.4)	
AC 30V							
<b>SPECIFICATIONS</b>							
ITEM	TEST METHOD	REQUIREMENTS	QT	AT			
<b>CONSTRUCTION</b>							
GENERAL EXAMINATION	VISUALLY AND BY MEASURING INSTRUMENT.	ACCORDING TO DRAWING.	X	X			
MARKING	CONFIRMED VISUALLY.		X	X			
<b>ELECTRICAL CHARACTERISTICS</b>							
DELETED $\Delta$							
VOLTAGE PROOF	100 V AC FOR 1 min.	NO FLASHOVER OR BREAKDOWN.	X	X			
CONTACT RESISTANCE	100 mA.DC.	350 m $\Omega$ MAX. $\Delta$	X	X			
<b>REVISIONS</b>							
COUNT	DESCRIPTION OF REVISIONS	DESIGNED	CHECKED	DATE			
1	DIS-E-002936	MO. SHINUYAMA	KN. ICHIKAWA	09.09.15			
<b>REMARK</b>							
A connector independent performance is based on CL242-0009-3.							
HIROSE will not guarantee the performance on these specifications in case this product will be mated with the others which is not HIROSE'S.							
Unless otherwise specified, refer to USB2.0 or EIA 364.							
Note QT:Qualification Test AT:Assurance Test X:Applicable Test							
<b>HIROSE</b>				DRAWING NO. ELC4-126637-00			
SPECIFICATION SHEET				PART NO. ZX64-B-5S-1000-STDA			
HIROSE ELECTRIC CO., LTD.				CODE NO. CL242-1004-5-00			
				1/1			