

Excellent Integrated System Limited

Stocking Distributor

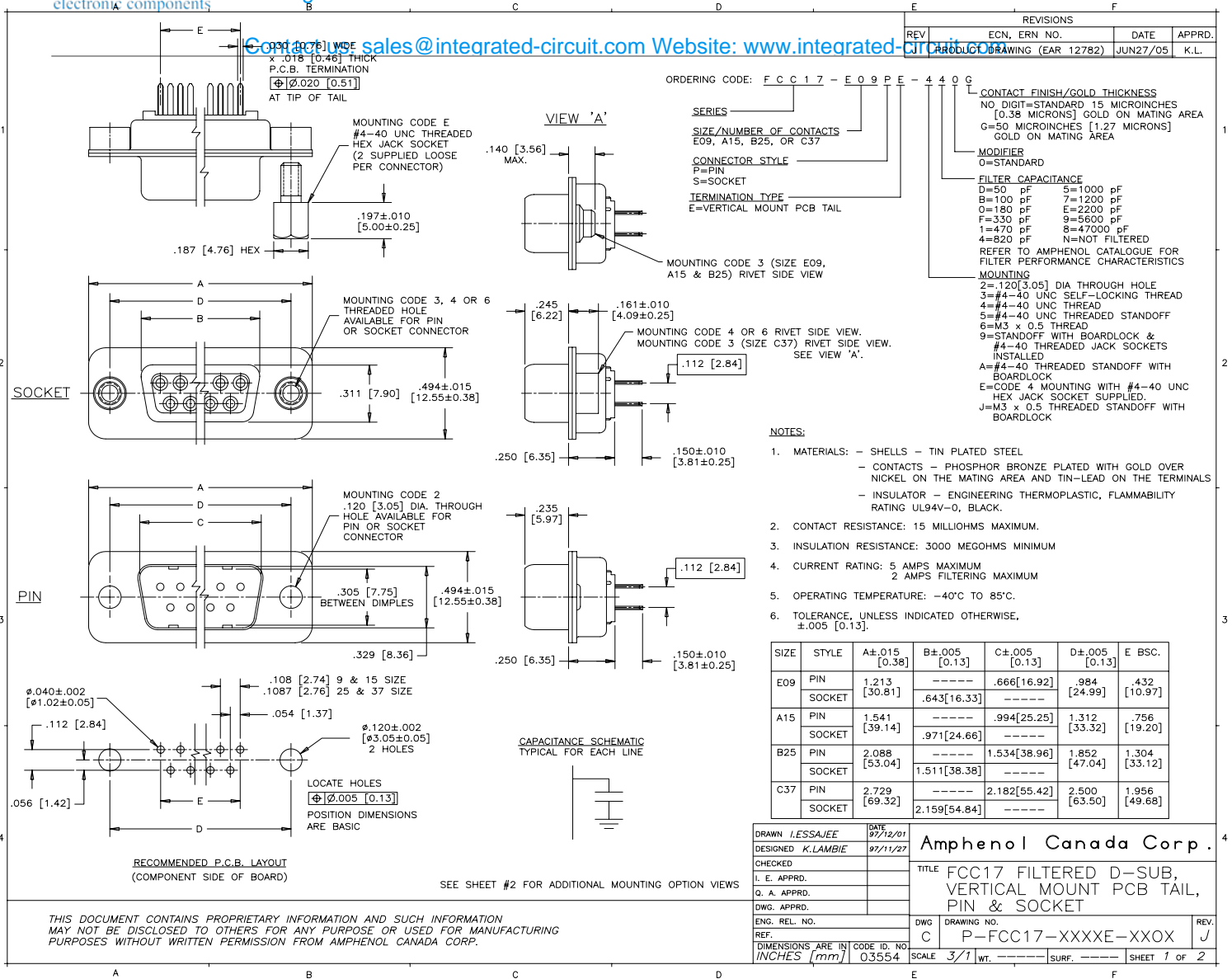
Click to view price, real time Inventory, Delivery & Lifecycle Information:

[Amphenol Commercial Products](#)
[FCC17-E09SE-A50](#)

For any questions, you can email us directly:

sales@integrated-circuit.com

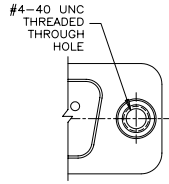
Contact us: sales@integrated-circuit.com Website: www.integrated-circuit.com



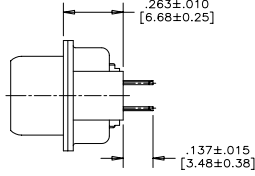
Contact us: sales@integrated-circuit.com Website: www.integrated-circuit.com

REVISIONS			
REV.	ECN, ERN NO.	DATE	APPRD.
1	PRODUCT DRAWING (EAR 12782)	JUN27/05	K.L.

**ADDITIONAL MOUNTING OPTIONS AVAILABLE
FOR PIN OR SOCKET CONNECTOR**

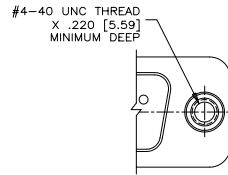


PARTIAL FRONT VIEW

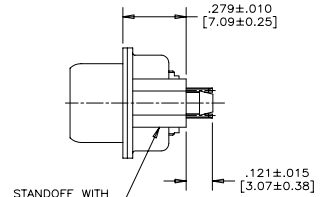


SIDE VIEW

MOUNTING CODE 5

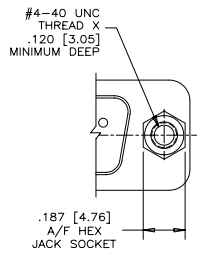


PARTIAL FRONT VIEW

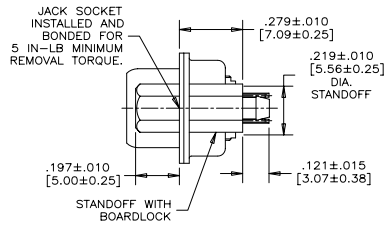


SIDE VIEW

MOUNTING CODE A

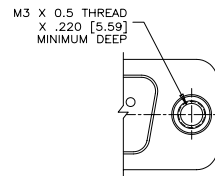


PARTIAL FRONT VIEW

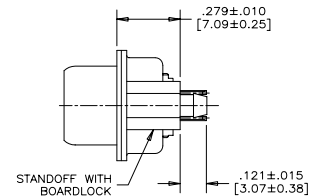


SIDE VIEW

MOUNTING CODE 9



PARTIAL FRONT VIEW



SIDE VIEW

MOUNTING CODE J

THIS DOCUMENT CONTAINS PROPRIETARY INFORMATION AND SUCH INFORMATION
MAY NOT BE DISCLOSED TO OTHERS FOR ANY PURPOSE OR USED FOR MANUFACTURING
PURPOSES WITHOUT WRITTEN PERMISSION FROM AMPHENOL CANADA CORP.

DRAWN I.ESSAJEE	DATE 97/12/01	Amphenol Canada Corp.	
DESIGNED K.LAMBIE	97/11/27		
CHECKED		TITLE FCC17 FILTERED D-SUB, VERTICAL MOUNT PCB TAIL, PIN & SOCKET	
I. E. APPRD.			
Q. A. APPRD.			
DWG. APPRD.			
ENG. REL. NO.		DWG C	DRAWING NO.
REF.		SCALE 3/1	WT. -----
DIMENSIONS ARE IN INCHES [mm]	CODE ID. NO. 03554	SURF. -----	SHEET 2 OF 2