

## Excellent Integrated System Limited

Stocking Distributor

Click to view price, real time Inventory, Delivery & Lifecycle Information:

[Samtec, Inc.](#)  
[CC69R-1620-01-T-SP](#)

For any questions, you can email us directly:  
[sales@integrated-circuit.com](mailto:sales@integrated-circuit.com)

REVISION W

**ALL DIMENSIONS ARE REFERENCE**  
(SEE XC-169-XX-XX-X-XX FOR CONTROLLING PRINT)

CC69X-XXXX-01-X-XX

DO NOT SCALE FROM THIS PRINT

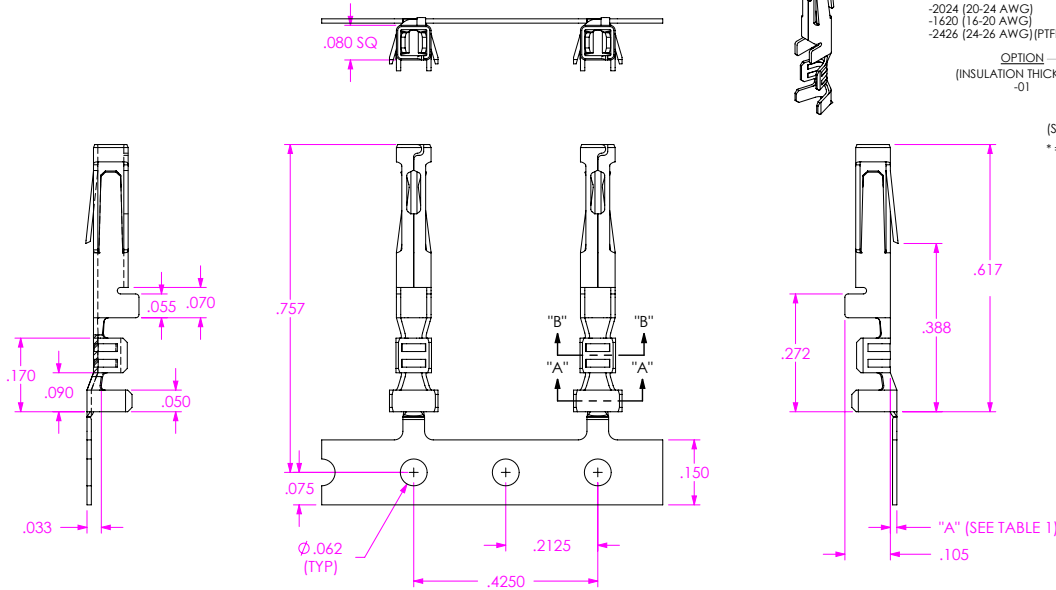
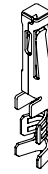
**SUPPLIED**  
-L: LOOSE  
-R: REEL

**LEAD STYLE**  
-2024 (20-24 AWG)  
-1620 (16-20 AWG)  
-2426 (24-26 AWG) (PTFE)

**OPTION**  
(INSULATION THICKNESS)  
-01

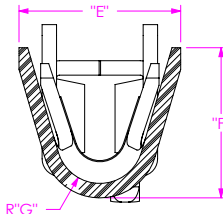
**MATERIAL SPECIFICATION**  
-SP: STANDARD POWER  
\* -HP: HIGH POWER

**PLATING**  
-T: MATTIE TIN

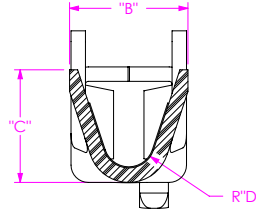


(SEE PP-C-169-XX-XX-X FOR PLATING INSTRUCTIONS)  
\* = EXISTING CUSTOMERS ONLY AS OF REV P

FIG 1  
(CC69X-XXXX-01-X-XX SHOWN)



SECTION "A"-"A"  
SCALE 10 : 1



SECTION "B"-"B"  
SCALE 10 : 1

**NOTES:**

1. PLATED XC-169 PARTS TO BE PULLED, PLATING OPTION CONFIRMED, POSITIONED AS SHOWN ON SAMTEC REEL WITH VIEWPORTS, LABELED CC69R WITH APPROPRIATE PLATING CALLOUT AND LABEL PLACED AS SHOWN.
2. MAXIMUM No OF SPLICES PER REEL: 2.
3. SPLICES ARE NOT TO BE CONNECTED.
4. NUMBER OF SPLICES TO BE MARKED ON EACH REEL.
5. REELED PARTS TO BE INTERLEAVED WITH PAPER BETWEEN EACH LAYER OF PARTS.
6. ALLOWABLE INTERLEAF SPLICES PER REEL: 3.
7. SECURELY CONNECT INTERLEAF SPLICE.
8. OUTER WRAP SHALL RECEIVE PROTECTIVE REEL BAND PER BELOW: RB-24-1.00-P.
9. DUE TO PLATING REQUIREMENTS CONTACT SAMPLES MAY BE REMOVED INTERMITTINGLY FROM THE CARRIER RESULTING IN SMALL GAPS BUT DOES NOT AFFECT FINAL COUNT.
10. QTY PER REEL: 4,000 +100/-0 PCS.

UNLESS OTHERWISE SPECIFIED, DIMENSIONS ARE IN INCHES. TOLERANCES ARE:  
DECIMALS ANGLES

**PROPRIETARY NOTE**  
THIS DOCUMENT CONTAINS INFORMATION CONFIDENTIAL AND PROPRIETARY TO SAMTEC, INC. AND SHALL NOT BE REPRODUCED OR TRANSFERRED TO OTHER DOCUMENTS OR DISCLOSED TO OTHERS OR USED FOR ANY PURPOSE OTHER THAN THAT WHICH IT WAS OBTAINED WITHOUT THE EXPRESSED WRITTEN CONSENT OF SAMTEC, INC.



520 PARK EAST BLVD, NEW ALBANY, IN 47150  
PHONE: 812-944-6733 FAX: 812-948-5047  
e-Mail info@SAMTEC.com code 55322

**MATERIAL:** DO NOT SCALE DRAWING  
-SP: PHOS BRONZE  
-HP: HIGH COPPER ALLOY  
THICKNESS: .0100

SHEET SCALE: 3:1

DESCRIPTION: .165 IPBD CONTACT

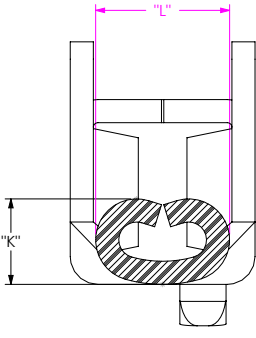
DWG. NO. CC69X-XXXX-01-X-XX

BY: BRATCHER 10/7/04 SHEET 1 OF 2

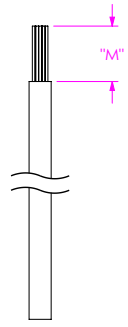
TABLE 1

STYLE	"A"	"B"	"C"	"D"	"E"	"F"	"G"	"H"	"J"
-2024	.015	.082	.078	.018	.112	.104	.030	.005	30
-1620	.025	.110	.115	.025	.184	.168	.055	.005	30
-2426	.015	.082	.078	.018	.080	.067	.020	.005	30

REVISION W



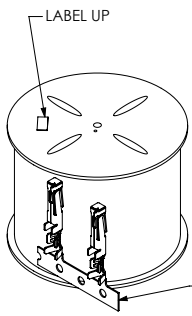
WIRE CRIMP  
SCALE 16 : 1



INSULATOR STRIP LENGTH

P/N	AWG	STRANDS / AWG	INSULATION OD	"K"	"L"	"M"
CC69X-2024-X	24	7/32	0.053-0.059	.0360	.0580	.128
	22	7/30	0.059-0.065	.0390	.0580	.128
	20	7/28	0.0660-0.0720	.0410	.0580	.128
CC69X-1620-X	20	7/28	0.097-0.103	.0470	.0740	.115
	18	16/30	0.107-0.113	.0520	.0740	.115
	18TC	19/30	0.0655-0.0688	.0520	.0740	.115
CC69X-2426-X	16	26/30	0.121-0.125	.0620	.0740	.128
	24TC	7/32	0.041-0.047	.0380	.0580	.128

FIG 2  
RECOMMENDED PROCESSING



UNWINDING DIRECTION

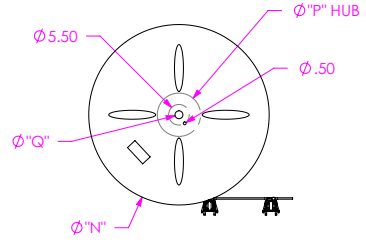


FIG 3  
REEL SPECIFICATIONS

SUPPLIED	REEL PART NUMBER	"N"	"P"	"Q"
-R	R-24-08.00-1.00-P	24.00	8.000	1.125

**PROPRIETARY NOTE**  
 THIS DOCUMENT CONTAINS INFORMATION CONFIDENTIAL AND PROPRIETARY TO SAMTEC, INC. AND SHALL NOT BE REPRODUCED OR TRANSFERRED TO OTHER DOCUMENTS OR DISCLOSED TO OTHERS OR USED FOR ANY PURPOSE OTHER THAN THAT WHICH IT WAS OBTAINED WITHOUT THE EXPRESSED WRITTEN CONSENT OF SAMTEC, INC.

DO NOT SCALE DRAWING

SHEET SCALE: 3:1

**samtec**  
 520 PARK EAST BLVD, NEW ALBANY, IN 47150  
 PHONE: 812-944-6733 FAX: 812-948-5047  
 e-Mail info@SAMTEC.com code 55322

DESCRIPTION: .165 IPBD CONTACT

DWG. NO. CC69X-XXXX-01-X-XX

BY: BRATCHER 10/7/04 SHEET 2 OF 2