

## Excellent Integrated System Limited

Stocking Distributor

Click to view price, real time Inventory, Delivery & Lifecycle Information:

[Molex Connector Corporation](#)  
[67491-0020](#)

For any questions, you can email us directly:

[sales@integrated-circuit.com](mailto:sales@integrated-circuit.com)

10 9 8 7 6 5 4 3 2 1

F

E

D

C

B

A

F

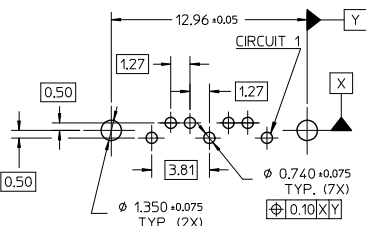
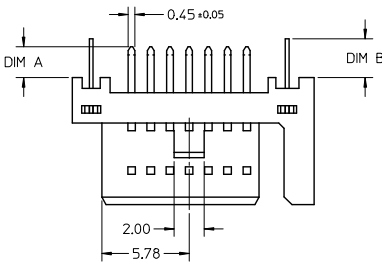
E

D

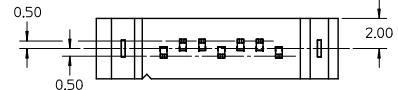
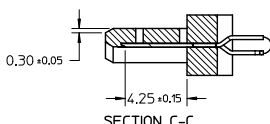
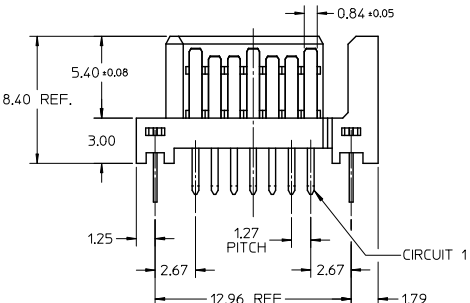
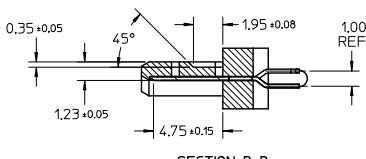
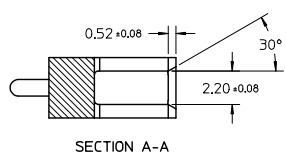
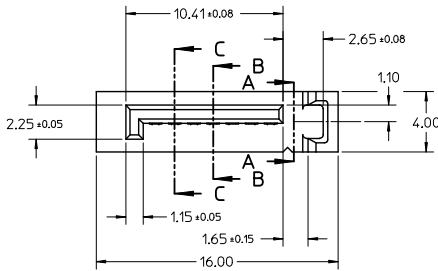
C

B

A

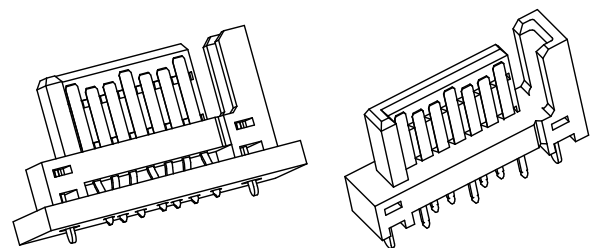


RECOMMENDED P.C.B. LAYOUT (T=1.6mm/2.0mm/2.4mm)



**NOTES:**

- MATERIAL:**  
HOUSING: THERMAL PLASTIC, UL94V-0, COLOR: SEE SHEET2  
TERMINAL/PEG: COPPER ALLOY, THICKNESS=0.25MM
- TERMINAL PLATING:**  
CONTACT AREA: (a) GOLD FLASH  
(b) 0.76 MICRON GOLD PLATED  
(c) 0.38 MICRON GOLD PLATED
- SOLDER TAIL:**  
1.27 MICRON MIN. MATTE TIN PLATED
- UNDER PLATE:**  
1.27 MICRON MIN. NICKEL PLATED
- PEG PLATING:**  
1.27 MICRON MIN. MATTE TIN PLATED OVERALL  
1.27 MICRON MIN. NICKEL UNDER PLATED
- PACKAGING SPECIFICATION REFER TO PK-67491-001**
- PRODUCT SPECIFICATION REFER TO PS-67491-001**
- MATING PART: 67489**
- RECOMMENDED PROCESS: WAVE SOLDERING**



<b>OBsolete PARTS</b> EC NO: SH2012-0231 DRAWING: LI CHKD: XZhang APPR: ATIN REV: J	<b>QUALITY SYMBOLS</b> √=0 ∇=0 ∇=0	<b>GENERAL TOLERANCES (UNLESS SPECIFIED)</b>		<b>DIMENSION STYLE</b> MM ONLY		SCALE 4:1	DESIGN UNITS METRIC	THIRD ANGLE PROJECTION		
		4 PLACES ± --- ± ---	3 PLACES ± --- ± ---	2 PLACES ± 0.15 ± ---	1 PLACE ± 0.25 ± ---	ANGULAR ± 3 °	DRAWN BY GRATE MA DATE 2004/02/02		CHECKED BY YAJUN DATE 2004/02/02	TITLE 1.27MM HIGH SPEED PLUG VERTICAL TYPE
		DRAFT WHERE APPLICABLE MUST REMAIN WITHIN DIMENSIONS		SEE CHART IN SHEET 2		MATERIAL NO. RZHANG DATE 2010/11/03	MOLEX INCORPORATED		DOCUMENT NO. SD-67491-001	SHEET NO. 1 OF 2
		THIS DRAWING CONTAINS INFORMATION THAT IS PROPRIETARY TO MOLEX INCORPORATED AND SHOULD NOT BE USED WITHOUT WRITTEN PERMISSION								

10 9 8 7 6 5 4 3 2 1

10	9	8	7	6	5	4	3	2	1
P/N	PLATING TYPE	DIM 'A'	DIM 'B'	COLOR	SOLDE AREA PLATING				
67491-0020	SEE NOTE 2(a)	2.05	2.57	BLACK	PURE TIN MATTE FINISH				
67491-0021	SEE NOTE 2(b)								
67491-0022	SEE NOTE 2(c)								
67491-0025	SEE NOTE 2(a)	2.05	2.57	BLUE, PANTONE NO. 293C ΔE<3					
67491-2020	SEE NOTE 2(a)								
67491-2021	SEE NOTE 2(b)	2.35	3.20	BLACK					
67491-2025	SEE NOTE 2(a)								
67491-2027	SEE NOTE 2(c)	3.00	3.20	BLACK					
67491-3010	SEE NOTE 2(a)								
67491-3011	SEE NOTE 2(b)								
67491-3012	SEE NOTE 2(c)	3.00	3.20	BLUE, PANTONE NO. 293C ΔE<3					
67491-3110	SEE NOTE 2(a)								



10	9	8	7	6	5	4	3	2	1
OBSOLETE PARTS		EC NO: SH2012-0231		2012/01/17		DRAWN BY		DATE	
J		DRAWING		2012/01/17		GRATE MA		2004/02/02	
J		CHKD:XOZHANG		2012/01/20		CHECKED BY		DATE	
J		APPR:ATIN		2012/01/20		YA JUN		2004/02/02	
REV		DESCRIPTION		QUALITY SYMBOLS		APPROVED BY		DATE	
				√=0		RZHANG		2010/11/03	
				√=0		MATERIAL NO.		DOCUMENT NO.	
				√=0		SEE CHART		SD-67491-001	
				DRAFT WHERE APPLICABLE MUST REMAIN WITHIN DIMENSIONS		SIZE		SHEET NO.	
						A3		2 OF 2	
						THIS DRAWING CONTAINS INFORMATION THAT IS PROPRIETARY TO MOLEX INCORPORATED AND SHOULD NOT BE USED WITHOUT WRITTEN PERMISSION			

tb\_frame\_A3\_P\_AM\_T  
Rev. F 2009/06/18