

Excellent Integrated System Limited

Stocking Distributor

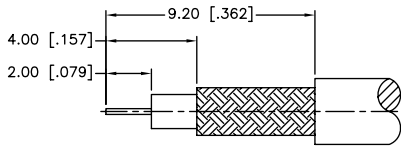
Click to view price, real time Inventory, Delivery & Lifecycle Information:

[Amphenol RF](#)
[282103](#)

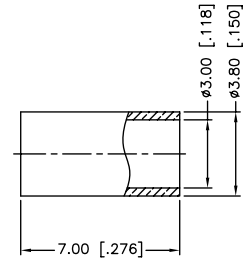
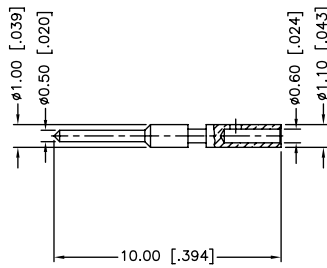
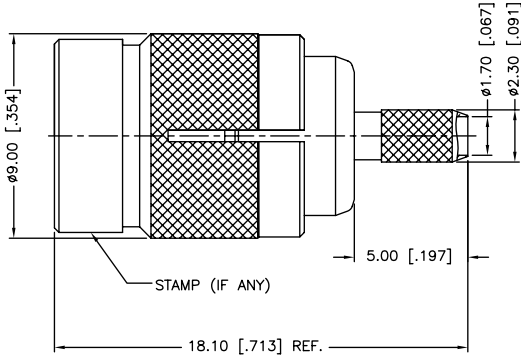
For any questions, you can email us directly:

sales@integrated-circuit.com

REV.	DATE	ECR NO.	DESCRIPTION
NC	12/14/00	XXXXXX	INITIAL RELEASE
A	10/19/08	XXXXXX	UPDATE DRAWING FORMAT
B	09/06/13	2524	ADD MISSING ITEMS TO B.O.M., CHANGE FERRULE, CORRECT CONTACT O.D., UPDATE DRAWING FORMAT



RECOMMENDED CABLE STRIPPING DIM'S



1. IMPEDANCE: 50 OHM
2. FREQUENCY RANGE: 0-4 GHZ
3. DIELECTRIC WITHSTANDING VOLTAGE: 750 VRMS, MIN.
4. DURABILITY: 500 CYCLES MIN.
5. TEMPERATURE RANGE: -40°C TO +155°C
6. CRIMPED FERRULE
HEX. CRIMP SIZE .128"
7. CONTACT PIN TO SOLDER

UNLESS OTHERWISE SPECIFIED DIMENSIONS ARE IN MILLIMETERS; DIMENSIONS IN [] ARE IN INCHES AND FOR CUSTOMER REFERENCE ONLY.				APPROVALS	DATE	<h1 style="color: blue; margin: 0;">Amphenol Connex</h1>	
8	FERRULE	COPPER	NICKEL	1	DRAWN M.ZHANG		09/06/13
7	CONTACT PIN	BRASS	GOLD	1			
6	OUTER CONTACT	PHOSPHOR BRONZE	GOLD	1	CHECKED		
5	INSULATOR	PTFE	NATURAL	1	ISSUED		
4	BARREL	BRASS	NICKEL	1	SHEET	1 OF 1	
3	SPRING	SUS 301H	PASSIVATED	1	PART DESCRIPTION		
2	BODY	BRASS	NICKEL	1	1.0/2.3 CRIMP PLUG (FOR RG-174/U,188A/U,316/U CABLE)		
1	SHELL	BRASS	NICKEL	1	PART NO.		
				CAD FILE		282103	
DO NOT SCALE DRAWING				C:/CONNEX/282103.DWG		DWG. NO. 282103.DWG	
DESCRIPTION				REV.	B	SIZE	A
						SCALE	NA

UNLESS OTHERWISE SPECIFIED DIMENSIONS ARE IN MILLIMETERS; DIMENSIONS IN [] ARE IN INCHES AND FOR CUSTOMER REFERENCE ONLY.

UNLESS OTHERWISE SPECIFIED TOLERANCES FOR MILLIMETERS ARE:
 <0.5 ± 0.05mm
 0.5 - 6mm ± 0.10mm
 6 - 30mm ± 0.20mm
 30 - 120mm ± 0.30mm
 ANGLES ± 1°

UNLESS OTHERWISE SPECIFIED TOLERANCES FOR INCHES ARE:
 <.020 ± 0.002"
 .020 - .236 = ± 0.004"
 .236 - 1.180 = ± 0.007"
 1.180 - 4.724 = ± 0.012"
 ANGLES ± 1°