

Excellent Integrated System Limited

Stocking Distributor

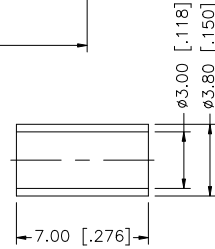
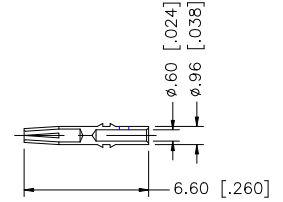
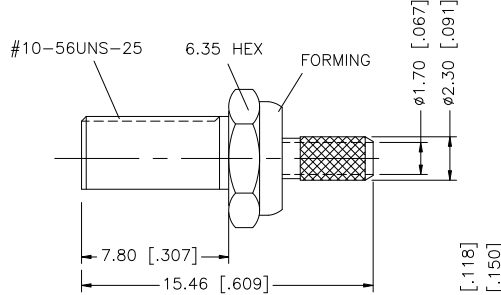
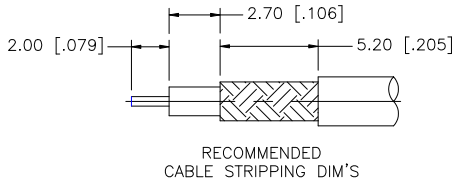
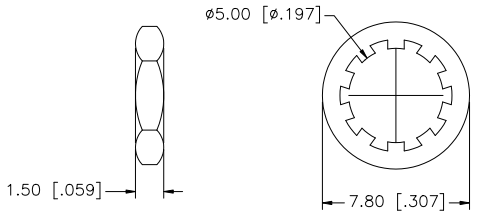
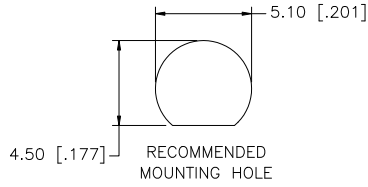
Click to view price, real time Inventory, Delivery & Lifecycle Information:

[Amphenol RF](#)
[252145](#)

For any questions, you can email us directly:

sales@integrated-circuit.com

REV.	DATE	DESCRIPTION
NC	01/21/01	INITIAL RELEASE
A	07/08/07	UPDATE DRAWING FORMAT



CRIMP NOTES:

1. CRIMPED FERRULE HEX CRIMP SIZE .128"
2. CONTACT PIN TO SOLDER
3. MAX. PANEL THICKNESS = 6.8mm

DESCRIPTION	MATERIAL	FINISH	QTY	UNLESS OTHERWISE SPECIFIED DIMENSIONS ARE IN MILLIMETERS. DIMENSIONS IN [] ARE IN INCHES AND FOR CUSTOMER REFERENCE ONLY.	APPROVALS	DATE	<h1 style="color: blue;">Amphenol Connex</h1>	
8 FERRULE	COPPER	GOLD	1	UNLESS OTHERWISE SPECIFIED TOLERANCES FOR MILLIMETERS ARE: 0.5 - 8mm ± 0.20mm 8 - 30mm ± 0.40mm 30 - 120mm ± 0.50mm UNLESS OTHERWISE SPECIFIED TOLERANCES FOR INCHES ARE: .020 - .315 = ± 0.007" .315 - 1.180 = ± 0.015" 1.180 - 4.724 = ± 0.020" DO NOT SCALE DRAWING	DRAWN G.R.S.	07/08/07		<h2 style="text-align: center;">MCX BULKHEAD CRIMP JACK (FOR RG-174/U, 188A/U, 316/U)</h2>
7 HEX NUT	BRASS	GOLD	1		CHECKED		PART DESCRIPTION	
6 LOCK WASHER	BRASS	GOLD	1		ISSUED		PART NO.	
5 CONTACT PIN	BER. COPPER	GOLD	1		SHEET 1 OF 1		252145	
4 BARREL	BRASS	GOLD	1		CAD FILE	C:/252/252145.DWG	DWG. NO. 252145.DWG	
3 INSULATOR	TEFLON	NATURAL	2		REV. A	SIZE A	SCALE NA	
2 BODY	BRASS	GOLD	1					