

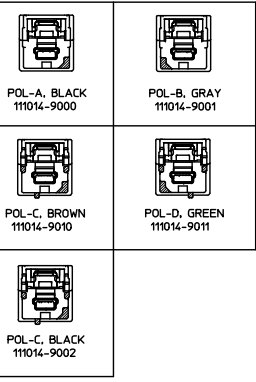
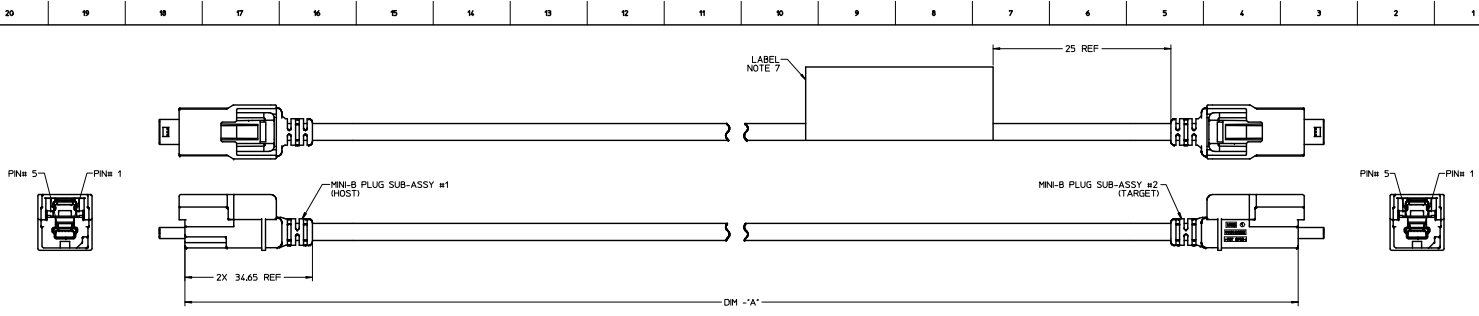
## Excellent Integrated System Limited

Stocking Distributor

Click to view price, real time Inventory, Delivery & Lifecycle Information:

[Molex Connector Corporation](#)  
[111014-5001](#)

For any questions, you can email us directly:  
[sales@integrated-circuit.com](mailto:sales@integrated-circuit.com)



MOLEX MAT. NO.	MINI-B POLARIZATION		DIM 'A'	CUSTOMER PART NO.
	MINI-B PLUG #1 (HOST)	MINI-B PLUG #2 (TARGET)		
111014-5000	A	A	500+10	PP207013
111014-5001	A	B	500+10	
111014-5003	B	B	500+10	
111014-5016	B	B	2620+10	
111014-5017	A	A	1500+10	
111014-5018	A	B	1000+10	
111014-5019	A	B	1240+10	
111014-5021	A	B	570+10	
111014-5022	A	B	715+10	
111014-5024	A	B	1640+10	
111014-5025	A	B	1225+10	
111014-5026	A	A	2000+20	
111014-5027	A	B	2000+20	
111014-5028	C (BROWN)	B	2000+20	
111014-5029	D	B	2000+20	
111014-5030	C (BROWN)	C (BROWN)	2000+20	
111014-5031	A	A	3000+30	
111014-5032	D	D	2000+20	
111014-5033	D	D	3000+30	
111014-5034	A	A	305+10	
111014-5035	B	B	4800+20	
111014-5037	B	C (BROWN)	1000+10	
111014-5038	A	C (BLACK)	500+10	
111014-5039	B	B	300+10	

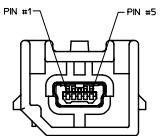
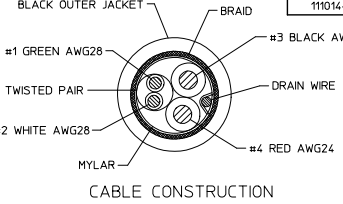
### WIRING DIAGRAM

SIGNAL NAME	CONTACT #	MINI-B PLUG #1 (HOST)	MINI-B PLUG #2 (TARGET)	CONTACT #	SIGNAL NAME
		WIRE COLORS	WIRE COLORS		
VBUS	1	RED	RED	1	VBUS
D-	2	WHITE	WHITE	2	D-
D+	3	GREEN	GREEN	3	D+
NO CONNECT	4	NO CONNECT	NO CONNECT	4	NO CONNECT
GND	5	BLACK	BLACK	5	GND
CABLE BRAID	SHELL	BRAID TO SHELL TERMINATION	SHELL	CABLE BRAID	

CUSTOMER P/N  
 MOLEX P/N REV YYYMMDDX  
 Made in 'Country of Origin'  
**MOLEX LOGO**  
 MOLEX P/N REV YYYMMDDX  
 CUSTOMER P/N

- NOTES:
- PART MUST CONFORM TO THE ELECTRICAL CONNECTION SYSTEM DESIGN SPECIFICATION (SDS) VER 13, DATED 06-APR-06, TEMP CLASS "-40-85°C".
  - UNLESS OTHERWISE SPECIFIED, PART MUST CONFORM TO THE LATEST LEVEL OF SAE/USCAR-30 AND USB 2.0.
  - ALL PLASTIC PARTS MUST HAVE MATERIAL IDENTIFICATION SYMBOLS CLEARLY MARKED, WHEREVER PACKAGE SIZE PERMITS.
  - GENERAL TOLERANCES: ±0.25 ALL ONE PLACE DIMENSIONS, ±0.15 ALL TWO PLACE DIMENSIONS, AND ±0.5° ALL ANGULAR DIMENSIONS.
  - 0.3MM MAXIMUM RADIUS PERMISSIBLE ON EDGES AND FILLETS SHOWN AS SHARP FOR PLASTIC PARTS.
  - PARTS ARE TO BE FREE OF SCRATCHES, DISCOLORATION, SALT RESIDUE OR OTHER IMPERFECTIONS THAT MAY AFFECT FUNCTION OR FIT OF PART.
  - IDENTIFICATION LABEL MUST DISPLAY CUSTOMER PART NUMBER IF REQUIRED, SUPPLIER PART NUMBER, DATE CODE (YYYYMMDD), REVISION IF REQUIRED, AND LOGO.
  - LEAD FREE, NO ROHS EXEMPTIONS.
  - FINISHES: TERMINAL: SELECTIVE GOLD (Au) IN THE CONTACT AREA, THICKNESS = 0.75 MICROMETER (30 MICRONS) MINIMUM OVER NICKEL (Ni) OVERALL, THICKNESS = 1.25 MICROMETER (50 MICRONS) MINIMUM.
  - PACKAGING SPECIFICATION: PK-68800-001.

**LABEL FORMAT**  
 LAST LETTER OF DATE CODE 'X' = PRODUCTION SHIFT CODE.  
 BAR CODE = MOLEX MATERIAL NUMBER.  
 Country of Origin = NAME OF COUNTRY OF MANUFACTURING PLANT.



MATING HEADER FOR MINI-B PLUGS (POLARIZATION - A SHOWN)

QUALITY SYMBOLS ∇=0 ∇=0 ∇=0	GENERAL TOLERANCES (UNLESS SPECIFIED) 4 PLACES ±--- ±--- 3 PLACES ±--- ±--- 2 PLACES ±0.13 ±--- 1 PLACE ±0.25 ±--- 0 PLACE ± ±---	DIMENSION STYLE MM ONLY DRAWN BY J.REEVES CHECKED BY J.REEVES APPROVED BY K.MONROE DATE 2007/07/27 DATE 2007/07/27 DATE 2010/03/16	SCALE 2:1 DESIGN UNITS METRIC THIRD ANGLE PROJECTION	TITLE <b>USB CABLE ASSEMBLY          MINI-B PLUG STRAIGHT TO          MINI-B PLUG STRAIGHT</b>	DOCUMENT NO. <b>SD-111014-1000</b>	SHEET NO. 1 OF 1
	MATERIAL NO. SEE CHART	<b>molex</b>				
	DRAFT WHERE APPLICABLE MUST REMAIN WITHIN DIMENSIONS	THIS DRAWING CONTAINS INFORMATION THAT IS PROPRIETARY TO MOLEX INCORPORATED AND SHOULD NOT BE USED WITHOUT WRITTEN PERMISSION				
	ADDDED - 5000 CUST. P/N EC NO. CP2005-4520 R (DRAWN) 2015/06/23 CHECKED 2015/06/23 APPROVAL 2015/06/23 DATE					