

Excellent Integrated System Limited

Stocking Distributor

Click to view price, real time Inventory, Delivery & Lifecycle Information:

[APM Hexseal](#)
[C1113/40](#)

For any questions, you can email us directly:

sales@integrated-circuit.com

SPECIFICATIONS

Material: E-SEELS: Silicone Rubber polymer type ASTM D1418

Temperature Range: E-SEELS: -80°F to +400°F

Pressure Range: Dust tight and splashproof.

Resistant to: Salt spray, weather, sunlight, ozone, corona and most acids.

Shelf Life: Excess of 25 years.

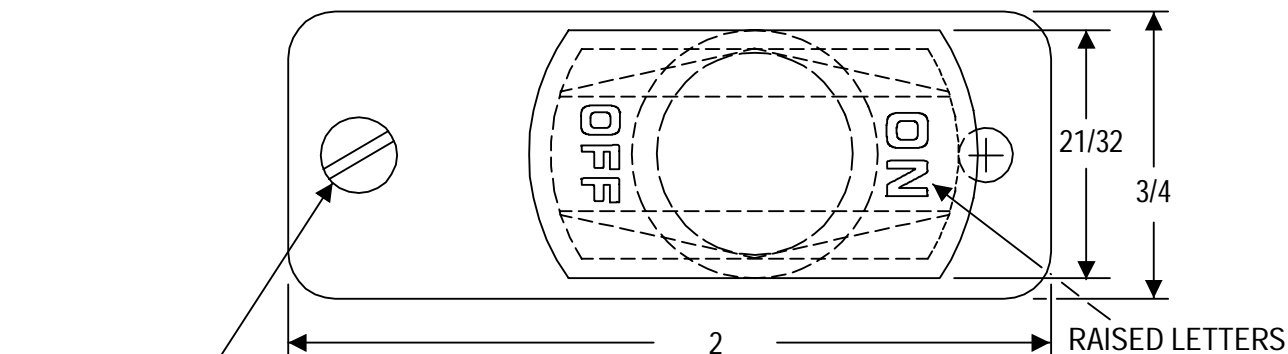
Operational Life: 10,000 actuations, minimum.

Notes:

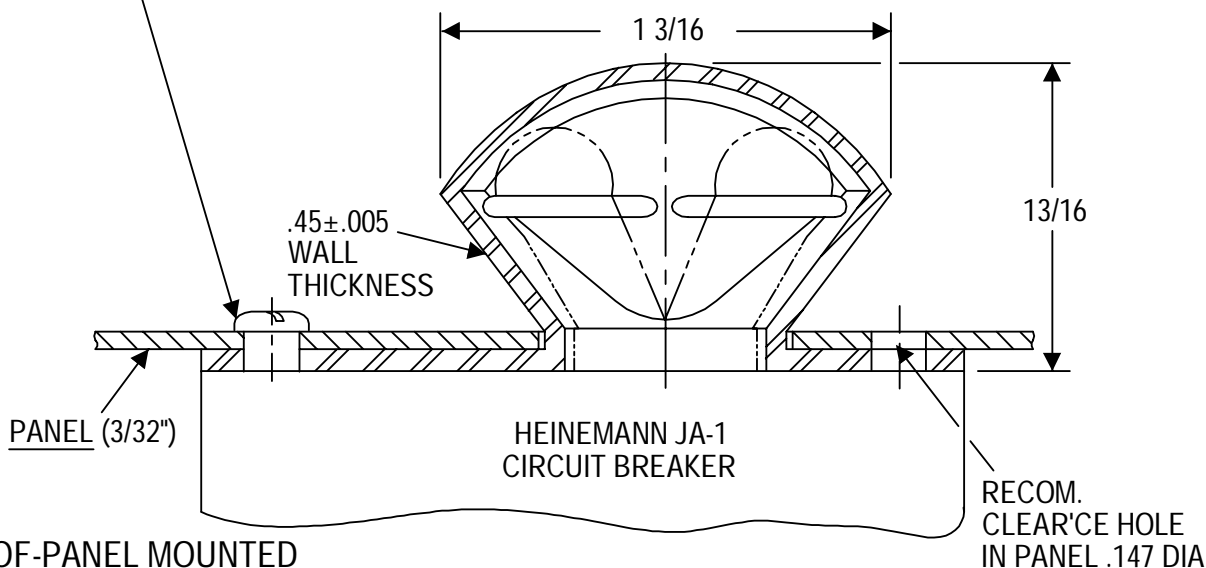
1. Mounting screws are supplied in lengths shown unless otherwise specified.

2. New sizes and types of RUBRGLAS-SEELS® are being added regularly. Please request other types and styles as required.

Agency Recognition: Front Panel mounted Circuit Breaker Boots are UL-listed to UL Std. 50, types 1, 2, 3, 12, 12K, and 13. Back-of-Panel mounted Circuit Breaker boots are UL-listed to UL Std. 50, type 1. Also meet CSA standards.



NOTE: ORDER SEPARATELY
2 - #6-32 x 3/8 SEELSKREWS®



BACK-OF-PANEL MOUNTED

E	WALL THICKNESS TOL. CHANGED FROM 0.010" to 0.005"				12-18-09	
D	SPECIFICATION CHANGED				08-19-09	
C	CAD COMPUTER GENERATED				1-3-03	
B	ADDED DIMENSIONS			NICK	2-6-68	
A	REDRWAN WITH FULL FLANGE WAS 1" DIA			NKS	11-1-67	
REV.	DESCRIPTION				DATE	
MAXIMUM AND MINIMUM MEASURE- MENTS ARE STATED DIRECTLY ON EACH DIMENSION. MAT'L: Silicon Rubber Polymer type ASTM D 1418		TITLE:	CIRCUIT BREAKER BOOT, CIRCUIT BREAKER TOGGLE ROUND HOLE MOUNTED		ENG.	
					DWN.	N.K.S.
			CHKD.		WS	11-1-67
FINISH:		APM-HEXSEAL CORPORATION		SCALE 2 : 1	DWG. NO. (C1113/40) HEXSEAL ®	

THIS DRAWING COVERS PROPRIETARY ITEM AND IS THE PROPERTY OF THE APM-HEXSEAL CORPORATION.
THIS DRAWING IS NOT TO BE COPIED OR USED WITHOUT THE WRITTEN APPROVAL OF AN OFFICER OF THE APM-HEXSEAL CORPORATION.