

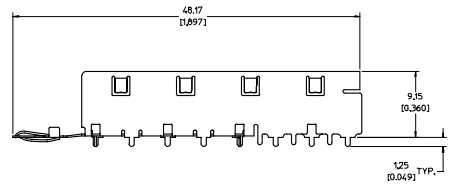
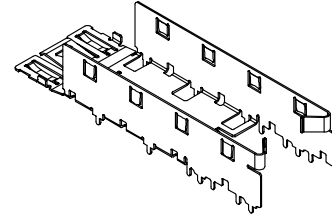
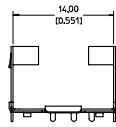
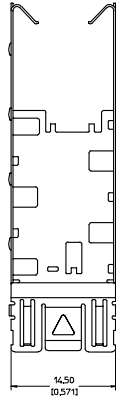
Excellent Integrated System Limited

Stocking Distributor

Click to view price, real time Inventory, Delivery & Lifecycle Information:

[Molex Connector Corporation](#)
[73927-0040](#)

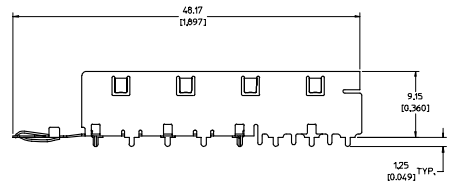
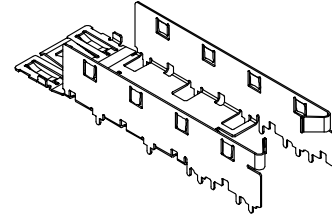
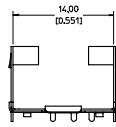
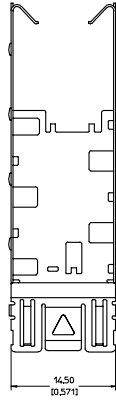
For any questions, you can email us directly:
sales@integrated-circuit.com



NOTES:

1. MATERIAL: COPPER ALLOY
2. PLATING: BRIGHT TIN
2.54 MICROMETERS TIN (MIN)
OVER 0.76 MICROMETERS (MIN) NICKEL
3. FOR DETAILS OF PCB AND BEZEL LAYOUT REFER
TO DOCUMENT SD-73927-100.
4. THIS PRODUCT NOT INTENDED FOR LEAD FREE, (RoHS), REFLOW PROCESS.
REFLOW TEMPERATURE SHOULD NOT EXCEED 180°C
5. FOR RoHS COMPLIANT REPLACEMENTS REFER TO MOLEX SERIES 74737.

ENTER DESCRIPTION E.C. NO. UST2006-0244 DRAWN BY MONSON 2005/10/12 CHECKED BY DAYE 2005/10/12 APPROVED BY BRUSSELL 2005/10/12 A	QUALITY SYMBOLS ▽=0 ▽=0	GENERAL TOLERANCES (UNLESS SPECIFIED)		DIMENSION STYLE MM/IN	SCALE 4:1	DESIGN UNITS METRIC	THIRD ANGLE PROJECTION
		4 PLACES ± --- ± --- 3 PLACES ± --- ± 0.05 2 PLACES ± 0.13 ± 0.01 1 PLACE ± 0.25 ± --- ANGULAR ± 1°	DRAWN BY DATE XS MONSON 2005/10/12	CHECKED BY DATE BRUSSELL 2005/10/12	APPROVED BY DATE BRUSSELL 2005/10/12	MATERIAL NO. 739270040	DOCUMENT NO. SD-73927-0040
DRAFT WHERE APPLICABLE MUST REMAIN WITHIN DIMENSIONS		MOLEX INCORPORATED SFP CAGE BASE SOLDER POSTS FOR WAVE SOLDER THIS DRAWING CONTAINS INFORMATION THAT IS PROPRIETARY TO MOLEX INCORPORATED AND SHOULD NOT BE USED WITHOUT WRITTEN PERMISSION					



NOTES:

1. MATERIAL: COPPER ALLOY
2. PLATING: BRIGHT TIN
2.54 MICROMETERS TIN (MIN)
OVER 0.76 MICROMETERS (MIN) NICKEL
3. FOR DETAILS OF PCB AND BEZEL LAYOUT REFER
TO DOCUMENT SD-73927-100.
4. THIS PRODUCT NOT INTENDED FOR LEAD FREE, REFLOW PROCESS.
REFLOW TEMPERATURE SHOULD NOT EXCEED 180°C. FOR
REFLOW PROCESSES GREATER THAN 180°C, REFER TO MOLEX
SERIES 74737.

ENTER DESCRIPTION E.C. NO. 2006/0729 DRAWN BY KX MONSON CHECKED BY DAVID APPROVED BY BRUSSELL DATE 2005/10/12	QUALITY SYMBOLS ▽=0 ▽=0	GENERAL TOLERANCES (UNLESS SPECIFIED)		DRAGON STYLE	SCALE	DESIGN UNITS	THIRD ANGLE PROJECTION
		MM	INCH	MM/IN	4:1	METRIC	☉
		4 PLACES ± 0.13	± 0.01	DRAWN BY	DATE	TITLE	
		3 PLACES ± 0.25	± 0.01	KX MONSON	2005/10/12	SFP CAGE BASE SOLDER POSTS FOR WAVE SOLDER	
		2 PLACES ± 0.25	± 0.01	CHECKED BY	DATE	MOLEX INCORPORATED	
		1 PLACE ± 0.25	± 0.01	BRUSSELL	2005/10/12		
		ANGULAR ± 1°		APPROVED BY	DATE		
				BRUSSELL	2005/10/12		
DRAFT WHERE APPLICABLE MUST REMAIN WITHIN DIMENSIONS		MATERIAL NO.	739270040	DOCUMENT NO.	SD-73927-040	SHEET NO. 1 OF 1	
SEE THIS DRAWING CONTAINS INFORMATION THAT IS PROPRIETARY TO MOLEX INCORPORATED AND SHOULD NOT BE USED WITHOUT WRITTEN PERMISSION							